

SCIENCE CATALOGUE

April 2025



MOST MODERN & INDISPENSABLE TEACHING LEARNING
MATERIAL FOR PHYSICS, CHEMISTRY, BOTANY, ZOOLOGY

ATTENTION PLEASE!!

Now we can supply Large Format Charts and Maps in any quantity upto 63" width. The large format charts and maps are printed using latest Digital technology. The details are as below:

- Material:** A. Printed on Non-Tearable, Non-Reflective, PVC-Free, eco-friendly, odour-free Rexine size upto 63".
B. Printed on Non-tearable Synthetic paper 125 micron thick - to give extra life to the product size upto 54".
- Maximum Size:** One side less than or equal to 160 cm - makes viewing comfortable from a distance.
- Design:** You can select any design from our catalogue - flexibility of choice.
- MOQ:** No minimum order quantity. As the quantity increases, the price decreases.
- Inks:** Digital printing using Non-toxic inks - safe for students and teachers.
- Colour:** Full colour printing - using natural shades.

Kindly feel free to send your inquiries for available sizes and prices.



CONTENTS

ITEM	Page
SCIENCE SECTION	1-18
Science & Technology Charts	1-7
Botany Charts	1-2
Zoology Charts	2-3
Chemistry Charts	3-5
Physics Charts	5-6
General Charts	7
Science & Technology Charts- Special Series, Genetics And Evolution Charts	8
Periodic Table Chart, Lab Display Charts, Lab Safety Charts	9
Food And Nutrition Charts, Life Sketch of Scientists	10
AIDS Charts, Disaster Management, Environmental Science Charts	11
Biology Models (Models on Botany, Flowers)	12
Zoology Models	13
Models on Human Anatomy	14-15
Photos of Great Personalities (Great Scientists), Lab Safety Photos	16-17
Gems of Psychology, Famous Personalities in Computer Science	18
HEALTH & HYGIENE SECTION	19-23
Health Care Series, Prevent The Diseases	19
Human Physiology Charts Laminated	20
Human Physiology Charts Synthetic	21
First Aid Charts, Some Special Charts on First Aid	22
Yogasan Charts, Map Stands	23
ANATOMICAL MODELS	24-41
Bones, Skeleton, Spine, Skull, Joints, Pelvis & Joint Section Models	24-30
Human Torso Models	30-31
Digestive System	32-33
Heart & Circulatory System	33-34
Respiratory System	34-35
Eye, Ear & Skin	36
Reproductive System	37
Excretory System	38
Brain & Nervous System	39
CPR Manikins, Gynae & Obstetric Models	40
Dental Models	41
HISTOLOGY & BIOMOLECULES	42-43
Muscle Fibre (Smooth, Cardiac, Skeletal) Models, DNA Model	42
Chloroplast, Animal Cell, Plant Cell	42
Bacterium, Virus (Aids, Rabies, Influenza), Mitosis, Meiosis, Mitochondria	43
SCIENCE KITS	44-47
Telescope & Binoculars, Rocket Models	44-45
Science Teaching Kits	45-46
Community Health Models	47
WORKING MODELS	48-52
Physics Working Models	48-51
Fun Science Kit	51
3-D Interactive Periodic Table, Biology & Robotics Working Models	52
Chemistry Working Models	53
VISUAL TEACHING AIDS	54
Projection Screens, OHP Transparencies, Slides	54

Some Tips to Study the Catalogue

Welcome! - You are about to enter the wonderfully exciting world of Teaching Aids. In the following pages of this catalogue you will come to know the products manufactured and marketed by us. Before you start browsing through them we give below some tips that will help you to study it better and effectively.

1. All the articles are manufactured in very heavy quantity by using very costly designs, dies and patterns. As such the size and description cannot be changed or altered at will. Please prepare your requirements according to the material and size mentioned in the catalogue.
2. All the articles are properly coded. Please mention the code and language.
3. The illustrations of charts are very selective. Each and every chart cannot be displayed in the catalogue. As such while placing an order please consult the detailed list mentioned therein.
4. The panorama of the Teaching Learning Material has been very well arranged subjectwise and where ever necessary we have given cross references.
5. It may be stated that the division of the catalogue i.e. Science, Social Studies, Maths is just for the sake of convenience. You may place your requirements with us all in one lot.

PLEASE NOTE

1. Customers' full satisfaction is our business policy. We are fully confident of the high standard and quality of our products.
2. To avoid delay in the execution of your order, please be careful as to mention:
 - a. The code, size & language of the map, chart, model or globe required by you.
 - b. Your complete address with pincode and telephone number.
3. The prices mentioned are nett Ex-godown including GST. Packing, Forwarding & Transportation charges extra. Please note that these prices are not M.R.P.
4. We have introduced GST codes in our catalogue- A and B. These are mentioned along with every price. GST code A means that the product is taxable @18% and GST code B means that the product is taxable @12%.
5. Please mention very clearly your exact requirements mentioning either the cost or our catalogue page No. and item code No. This will help us in processing your indents at a faster speed.
6. Images shown in the catalogue are for reference only. It may differ in colour or shade from actual product.
7. Please look for our Hologram to buy genuine products.
8. All disputes subject to Local Courts Jurisdiction only.

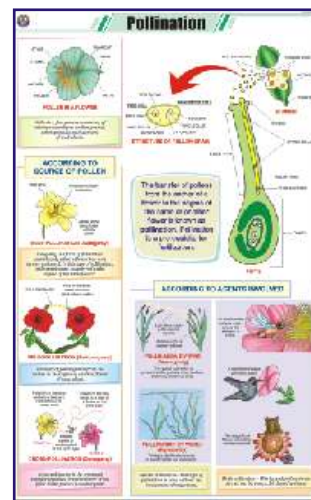
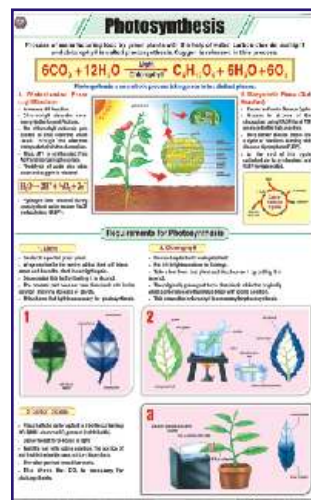
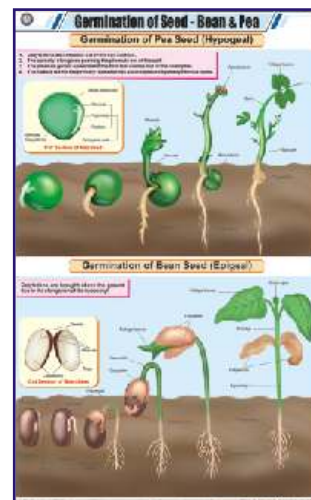
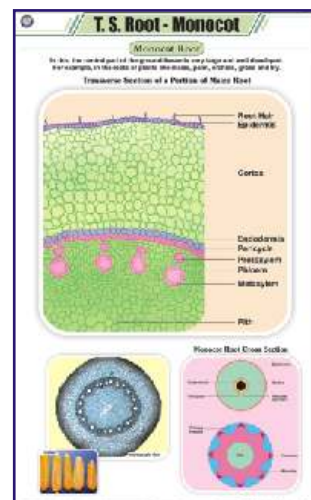
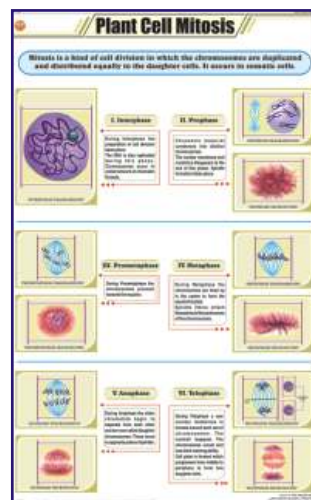
SCIENCE AND TECHNOLOGY CHARTS

Printed in multicolour on Art Paper duly Laminated. English only size 58x90 cm. Price Each Rs. 269.00 (B)
 Printed in multicolour on PVC free, non-tearable Rexine size 80x115 cm. (RM) Price Each Rs. 1049.00 (B)

The charts aim at familiarising students with the subject in a very realistic way and in social context. These delineate the process of life and of the technology that conditions our world today. The students will come to know the intricacies of the phenomenon and how it can be best used for the benefit of mankind.

BOTANY

- STB01 **Plant Kingdom** : Classification of plants, Cryptogamae, Phanerogamae.
- STB02 **Typical Plant** : Non-flowering plants, Flowering plants.
- STB03 **Typical Plant Cell** : Structure.
- STB04 **Plant Cell Organelles** : Nucleus, Cell Wall, Cell membrane, Endoplasmic reticulum, Mitochondria, Golgi bodies, Plastids, Chloroplast.
- STB05 **Plant Tissues** : Meristematic, Permanent.
- STB06 **Plant Cell Mitosis** : Cell division in plant somatic cells.
- STB07 **Plant Cell Meiosis** : Reductional cell division in plants.
- STB08 **T.S. Stem - Monocot** : Maize stem.
- STB09 **T.S. Dicot Stem (Sunflower)** : T.S. stem of *Helianthus annuus*.
- STB10 **T.S. Root - Monocot** : Maize root.
- STB11 **T.S. of Dicot Root** : Gram root.
- STB12 **T.S. Leaf - Monocot** : Maize, *Bouteloua* (C4 grass), *Poa annua* (C3 grass).
- STB13 **T.S. Leaf - Dicot** : Mango (mesophytic), Waterlily (hydrophytic), Nerium oleander (xerophytic).
- STB14 **Types of Leaves** : Simple, Compound, Heterophyll, Phyllotaxy, Venation (parallel & reticulate).
- STB15 **Root Systems** : Tap, Fibrous, Adventitious.
- STB16 **Structure of Flower** : Parts, Symmetry & floral diagram Actinomorphic, Zygomorphic, Assymetrical, Position of floral organs.
- STB17 **Calyx and Corolla** : Calyx modifications, Shapes of corolla.
- STB18 **Inflorescences** : Racemose, Cymose.
- STB19 **Fruits & Their classification** : Parts, Classification - simple, Aggregate, Composite.
- STB20 **The Seed : Structure & Germination** : Dicot- exalbuminous & albuminous, Monocot exalbuminous & albuminous, Condition necessary for germination, Epigeal, Hypogeal.
- STB21 **Germination of Seed - Bean & Pea** : Hypogeal germination, Epigeal germination.
- STB22 **Dispersal of Fruits & Seeds** : Dispersal by - air, animals, water, explosion.
- STB23 **Photosynthesis** : Light reaction (Hill reaction), Dark reaction (Calvin Benson cycle), Requirements.
- STB24 **Plant Diseases** : Black rot, Late blight, Bacterial wilt, Smut, Brown spot, TMV, Brown rust, Yellow mosaic, Red rot, Bacterial blight, Powdery mildew, Leaf curl.
- STB25 **Reproduction in Plants** : Vegetative reproduction, Spore formation, Sexual reproduction of flowering plants.
- STB26 **Pollination** : Autogamy, Geitonogamy, Xenogamy, Anemophily, Hydrophily, Biotic (zoophily).
- STB27 **Double Fertilization** : Megasporogenesis, Microsporogenesis.
- STB28 **Artificial Vegetative Propagation** : Tissue culture, Cutting, Layering, Grafting.
- STB29 **Stem Modifications** : Underground modification, Subaerial modification, Aerial modification.
- STB30 **Root Modifications** : Modifications of tap root, Adventitious root and roots for support.
- STB31 **Hydrophytes** : External features & anatomical characters.
- STB32 **Mesophytes** : General description, external features & anatomical characters.



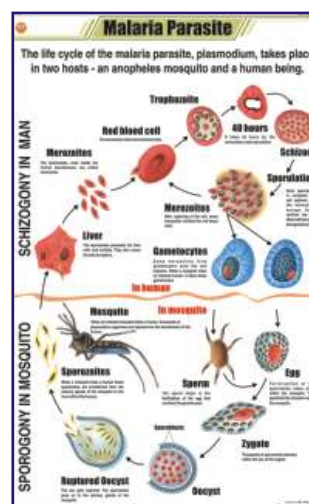
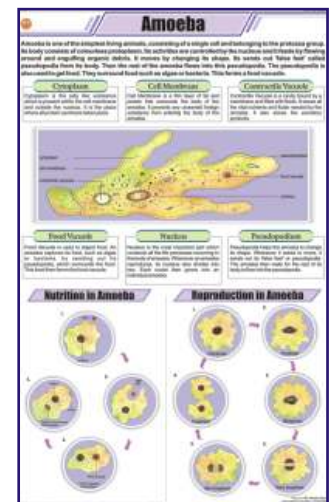
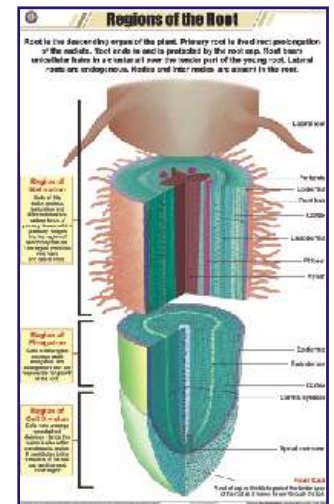
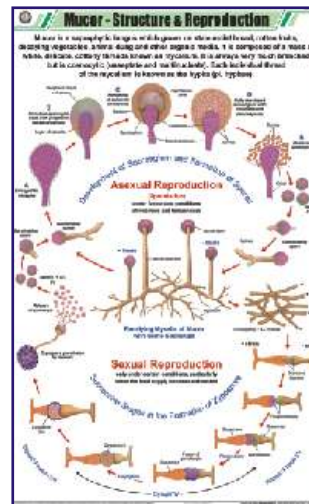
Printed in multicolour on Art Paper duly Laminated. English only size 58x90 cm. Price Each Rs. 269.00 (B)
 Printed in multicolour on PVC free, non-tearable Rexine size 80x115 cm. (RM) Price Each Rs. 1049.00 (B)

BOTANY

- STB33 **Xerophytes (Desert Plants)** : External features & anatomical characters.
- STB34 **Insectivorous Plants** : Sundew (drosera), Venus fly-trap (dionaea), Pitcher plant (nepenthes), Bladderwort (urticularia).
- STB35 **Fungi** : Classification, Symbiotic relationships, Economic importance, Harmful effects, Animal & plant fungal diseases.
- STB36 **Algae** : Classification, Uses, Harms.
- STB37 **Viruses** : Classification, Plant and animal viral diseases.
- STB38 **Bacteria** : Classification, Shape, Respiration, Chemical nature of cell wall, Growth & reproduction, Useful activities, Diseases.
- STB39 **Life Cycle of Fern** : Life cycle of pteridophyte (fern).
- STB40 **Life Cycle of Moss** : Life cycle of bryophyte (moss).
- STB41 **Spirogyra** : Structure, Reproduction (vegetative, asexual, sexual-lateral & scalariform conjugation, germination of zygospore).
- STB42 **Life Cycle of Mushroom** : Life cycle of fungi (mushroom).
- STB43 **Leaf Modification** : Tendrils, Spines, Thorns, Bracts, Flashy Leaves, Adhesive disc, Reproductive leaf, Phyllode, Insectivory.
- STB44 **Parasitic Plants** : Holoparasites - rafflesia, Ivy broomrape, cuscuta, Hemiparasites - Indian paintbrush, mistletoe, owl's clover.
- STB45 **Mucor** : Structure & reproduction of common mold.
- STB46 **Regions of Root** : Region of maturation, Elongation and cell division.
- STB47 **Vascular Bundle** : Xylem & Phloem tissues.
- STB48 **Secondary Growth** : Stage of Secondary growth, Annual (growth) rings.

ZOOLOGY

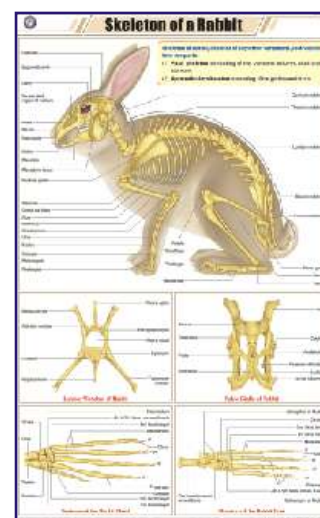
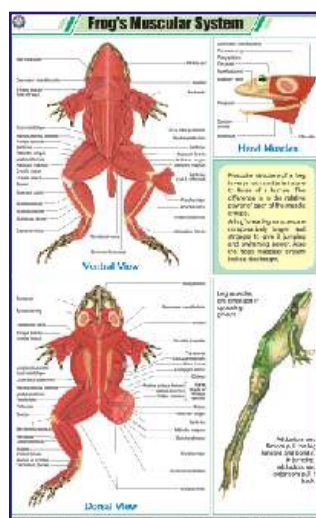
- STZ01 **Animal Kingdom** : Classification in several phylum, Classification of sub-phylum vertebrata into different classes.
- STZ02 **Animal Cell** : Structure.
- STZ03 **Animal Cell Organelles** : Nucleus, Nuclear membrane, Cell membrane, Golgi bodies, Centriole, Ribosomes, Endoplasmic reticulum, Cilium, Flagellum, Mitochondria, Lysosome, Peroxisome.
- STZ04 **Animal Tissues** : Epithelial, Connective, Muscular, Nervous.
- STZ05 **Animal Cell Mitosis** : Cell division in animal somatic cells.
- STZ06 **Animal Cell Meiosis** : Reductional cell division.
- STZ07 **Gametogenesis in Animals** : Oogenesis, Spermatogenesis.
- STZ08 **Fertilization in Animals** : Structure of sperm & ovum, Fertilization process.
- STZ09 **Protozoa** : Classification into 4 classes- Rhizopoda (amoeba), Mastigophora (euglena, giardia), Ciliophora (paramecium), Sporozoa (plasmodium vivax).
- STZ10 **Amoeba** : Structure, Nutrition and reproduction.
- STZ11 **Malaria Parasite** : Life cycle of malaria parasite - plasmodium vivax.
- STZ12 **Paramecium** : Structure, Nutrition, Locomotion and reproduction.
- STZ13 **Hydra** : Structure, LS of body wall, Nematocyst, Reproduction & developmental stages.
- STZ14 **Liver Fluke** : Structure and life cycle of opisthorchis sinensis.
- STZ15 **Tapeworm** : Morphology, Anatomy and general characteristics of Taenia Solium.
- STZ16 **Roundworm (Ascaris)** : Structure, Systems.
- STZ17 **Hookworm** : Structure, Life cycle.
- STZ18 **Life History of Mosquito** : Stages of life cycle of mosquito.
- STZ19 **Life Cycle of Butterfly** : Metamorphosis of a monarch butterfly
- STZ20 **Life History of Housefly**
- STZ21 **Life History of frog**
- STZ22 **Human Blood** : Functions, Components, RBC structure, Blood group, Blood clotting.
- STZ23 **Body's Defense** : Types of Leucocytes, Vaccination, Structure of antibody, Acquired Immunity.
- STZ24 **Harmful Insects**
- STZ25 **Beneficial Insects**
- STZ26 **Food Habits of Birds**



Printed in multicolour on Art Paper duly Laminated. English only size 58x90 cm. Price Each Rs. 269.00 (B)
 Printed in multicolour on PVC free, non-tearable Rexine size 80x115 cm. (RM) Price Each Rs. 1049.00 (B)

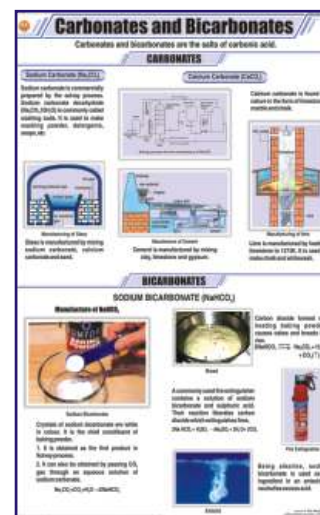
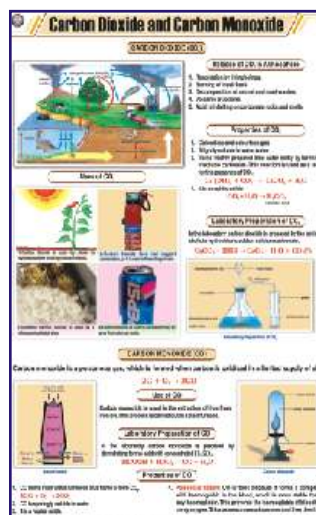
ZOOLOGY

- STZ27 **Fish Anatomy** : Bony fish-general anatomy & skeletal system, Cartilaginous fish-general anatomy, Gill structure.
 STZ28 **Birth of a Bird's Chick** : Development of chick from egg.
 STZ29 **Earthworm I** : Ext. Morphology & Reproduction.
 STZ30 **Earthworm II** : Blood Circulation, Respiratory & Nervous system.
 STZ31 **Earthworm III** : Digestion, Skin & Excretion.
 STZ32 **Cockroach I** : Morphology & Reproduction.
 STZ33 **Cockroach II** : Blood Circulation, Respiratory & Nervous system.
 STZ34 **Cockroach III** : Digestion, Excretory, Skin & Muscles.
 STZ35 **Vertebrate Classes**
 STZ36 **Sense Organs** : Eye, Ear, Tongue, Skin, Nose.
 STZ37 **General Dissection of Rabbit** : Dissection of a mammal
 STZ38 **Neuron** : Structure, Synapse, Bipolar N., Unipolar N., Multipolar N.
 STZ39 **Early Development of the Frog** : 2/4/8 cell stage, blastula, gastrula, embryo.
 STZ40 **Frog's Morphology & Internal Structure**
 STZ41 **Frog's Urogenital System** : Male & Female urogenital system.
 STZ42 **Frog's Circulatory System** : Frog's heart (Bullfrog).
 STZ43 **Frog's Nervous System** : Central/Peripheral/Autonomic nervous system, Brain of frog.
 STZ44 **Frog's Muscular System**
 STZ45 **Life Cycle of Cockroach** : Stages from Ootheca to hatching to nymph to adult.
 STZ46 **Skeleton of a Bird** : Skeleton of pigeon, Anatomy of flying, Pneumatic bone of bird.
 STZ47 **Skeleton of Rabbit** : Axial & appendicular skeleton of rabbit.



CHEMISTRY

- STC01 **Atom And Atomic Structure** : JJ Thompson discharge tube experiment, Rutherford's gold leaf experiment, Chadwick, Goldstein, Rutherford & Bohr's contribution.
 STC02 **Chemical Reactivity of an Element** : Reactivity series of metals.
 STC03 **Chemical Reaction & its Characteristics**
 STC04 **Classification of Chemical Reactions** : Combination reaction, Decomposition reaction, Displacement reaction, Double displacement reaction, Redox reaction, Exothermic - endothermic reaction, Photochemical reaction.
 STC05 **Valencies of Elements** : Name, symbol & valencies of natural occurring elements.
 STC06 **Chemical Bonding** : Covalent bonding (polar & non-polar), Ionic bonding, Metallic bonding, Hydrogen bonding.
 STC07 **Combustion** : Types of combustion - rapid, slow, explosion, complete, incomplete, ignition temperature.
 STC08 **Separation of Substances** : Distillation, Fractional distillation, Loading, Filtration, Churning, Evaporation & crystallisation, Magnetic separation, Sedimentation & decantation, Centrifugation, Sieving, Winnowing, Sublimation, Separating funnel.
 STC09 **Atmosphere and Composition of Air** : Layers of atmosphere, Composition of air.
 STC10 **Occurrence and Forms of Carbon**
 STC11 **Carbon dioxide and Carbon Monoxide**
 STC12 **Carbonates and Bicarbonates** : Sodium carbonate, Calcium carbonate, Sodium bicarbonate.
 STC13 **Sulphur** : Extraction, Structure, Types, Effects of heat, Vulcanisation.
 STC14 **Mole Concept** : Avagadro number, Avogadro's hypothesis.
 STC15 **Composition of Water by Weight** : Berzelius, Dulong & Dumas method, Morley's method, Proust's law.



Illustrations are selective. For orders refer the list above.

STC16 **Different Kinds of Cells** : Galvanic cell, Dry cell, Car battery, Rechargeable cell, Sodium sulphur battery, Solar cell, Fuel cell, Mercury zinc button cell.

STC17 **Electroplating & Corrosion** : Silver/Gold electroplating, Mechanism of rusting.

STC18 **Cement and Concrete** : Portland cement, Structure of concrete, Types of reinforced concrete foundations, Applications.

STC19 **Manufacture of Glass** : Soda lime silica glass, glass moulding.

STC20 **Alkanes** : General formula, Nomenclature, Applications, Methane molecule.

STC21 **Alkenes** : General formula, Functional group, Structure and IUPAC names, Preparation, Applications.

STC22 **Alkynes** : General formula, Functional group, Nomenclature, Structure & IUPAC names, Preparation, Applications.

STC23 **Alcohols** : General formula, Functional group, Nomenclature, IUPAC names & structure, Preparation, Uses of ethanol.

STC24 **Esters** : General formula, Nomenclature, Common esters, Preparation, Application.

STC25 **Organic Acids** : Functional group, Common organic acids, Applications.

STC26 **Soaps and Detergents** : Structure, Cleansing action, Problem with hard water.

STC27 **Plastics** : Thermoplastics - PVC & polythene, Thermosetting - bakelite & melamine.

STC28 **Synthetic Fibres** : Rayon, Polyester, Nylon, Acrylic.

STC29 **Extraction of Iron (Blast Furnace)** : Reduction of iron ore in furnace, Manufacture of steel-basic oxygen process & electric arc process.

STC30 **Aluminium Metallurgy** : Bayer's process, Hall-Heroult process.

STC31 **Copper Metallurgy** : Important ores, Extraction process, Electrolysis, Uses.

STC32 **Extraction of Zinc** : Roasting, Pyrometallurgical Process.

STC33 **Prep. of Sodium Hydroxide & Sodium Carbonate** : Castner cell, Solvay process.

STC34 **Prep. of Nitrogen and Nitric acid** : Laboratory prep. of nitrogen & nitric acid, Cryogenic distillation, Ostwald's process.

STC35 **Prep. of Chlorine and Hydrochloric acid**

STC36 **Prep. of Sulphur Dioxide & Sulphuric acid** : Contact process.

STC37 **Prep. of Ammonia and Haber Process**

STC38 **Prep. of Oxygen and Liquefaction of Air** : Manufacture of O_2 by heating, electrolysis of water, liquefaction of air.

STC39 **Prep. of H_2 & CO_2** : Lab preparation of hydrogen and carbon dioxide, Steam re-forming of natural gas.

STC40 **Manufacture of Bleaching Powder** : Hasenclever plant, Bachmann's plant.

STC41 **Manufacture of Phosphorus** : Manufacture of white phosphorus and red phosphorus.

STC42 **Crystal Lattices** : Various crystal system, their unit cells, variations & examples.

STC43 **Close Packed Structures** : Close packing in 2D & 3D, voids.

STC44 **Sodium Chloride Crystal** : Formation of NaCl crystal, Crystal fracture, FCC arrangement, Dissociation.

STC45 **Acids, Bases and Salts** : Properties & characteristics of acids, bases and salts.

STC46 **Electrolysis** : Electrolysis of molten NaCl, Faraday's laws of electrolysis, Refining, Electroplating.

STC47 **Atoms and Molecules** : Atomic No, Mass No, Isotopes, Isobars, Isotones, Molecules, Chemical formula.

STC48 **Solids, Liquids & Gases** : Forms of matter, Change of state.

Service with a smile is guaranteed.

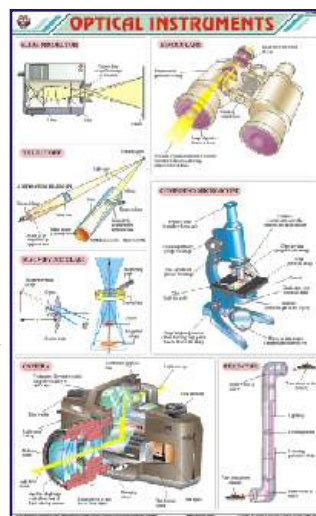
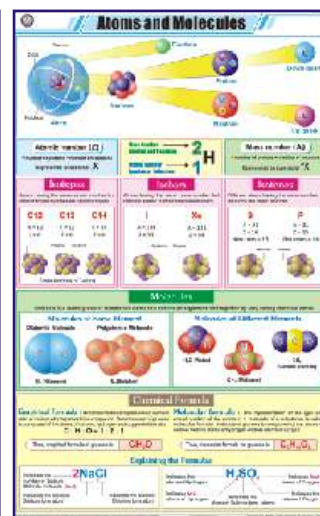
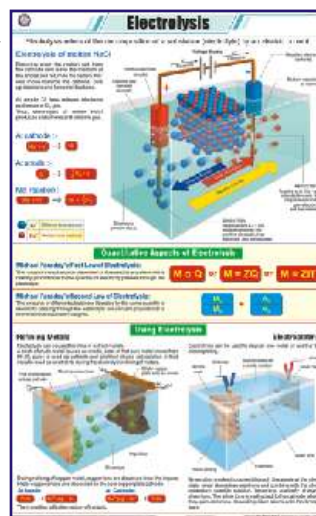
Printed in multicolour on Art Paper duly Laminated. English only size 58x90 cm. Price Each Rs. 269.00 (B)
 Printed in multicolour on PVC free, non-tearable Rexine size 80x115 cm. (RM) Price Each Rs. 1049.00 (B)

CHEMISTRY

- STC49 **Shapes of Atomic Orbitals** : Quantum numbers, Shapes of s, p, d & f orbitals.
 STC50 **Chemical Equilibrium** : Law of chemical equilibrium, Chemical equilibrium constant, Factors affecting equilibrium. **NEW**
 STC51 **Kinetic Theory** : Physical properties of matter at molecular level according to kinetic theory of gases. **NEW**
 STC52 **Electronic Configuration** : Atomic no, Mass no, Electronic configuration of first 20 elements. **NEW**

PHYSICS

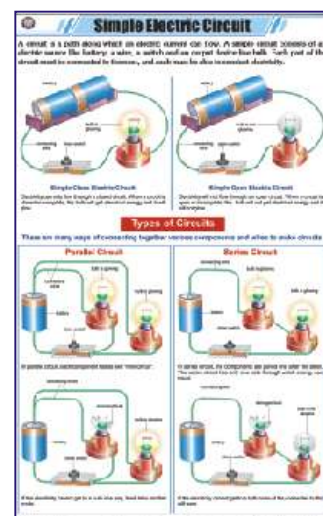
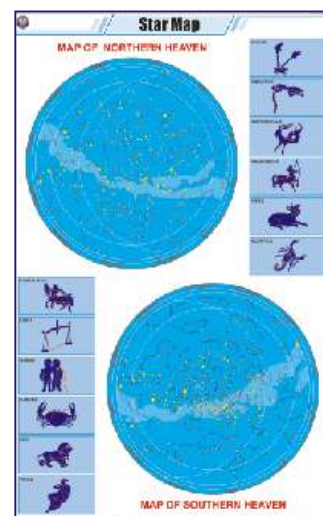
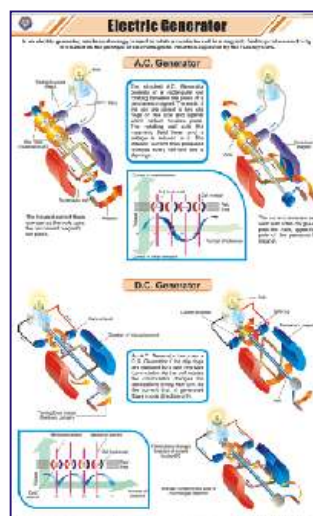
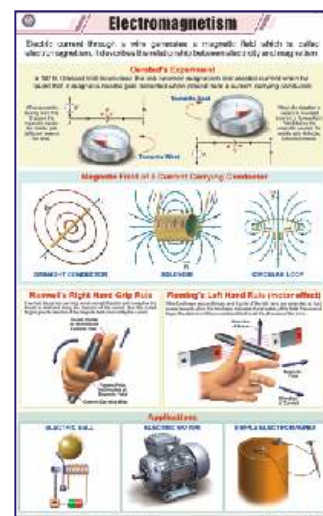
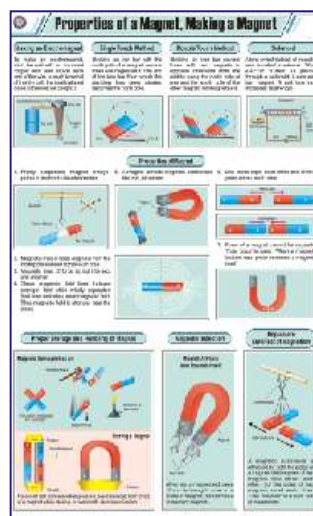
- STP01 **Motion** : Linear motion - rectilinear, curvilinear; Rotational motion, Oscillatory motion, Periodic motion.
 STP02 **Changes Around Us** : Slow-fast, Reversible - irreversible, Periodic - non-periodic, Desirable - non desirable, Physical - chemical changes.
 STP03 **Metric Weights and Measures** : SI units & their multiples & submultiples.
 STP04 **Measurements** : Standard systems, measuring methods.
 STP05 **Sound** : What is sound?, Decibel scale of different sounds, Characteristics of sound, Sonic boom, Ultrasound & echo.
 STP06 **Wave Motion** : Transverse wave, Longitudinal wave, examples.
 STP07 **Simple Machine** : Lever, Pulley, Wedge, Inclined plane, Screw, Wheel & Axle.
 STP08 **The Lever** : Lever of - first class, second class, third class.
 STP09 **Principle of Archimedes**
 STP10 **Pascal's Law** : Law & its applications, hydraulic press, braking system.
 STP11 **Reflection of Light** : Laws of reflection, Image formation by plane & spherical mirrors.
 STP12 **Refraction Through a Glass Slab** : Lateral displacement, Refractive index, Refraction through different mediums, Total internal reflection - looming & mirage.
 STP13 **Refraction Through Prisms** : Dispersion, Refraction through equilateral prism, Re-combination of spectrum colours, Rainbow.
 STP14 **Refraction of Light Through lenses** : Image formation by concave and convex lenses.
 STP15 **Optical Instruments** : Slide projector, Binoculars, Telescope, Compound microscope, Magnifying glass camera, Periscope.
 STP16 **Microscope** : Compound and Electron microscope, Ray diagram.
 STP17 **Telescope** : Refracting telescope, Ray diagram of refracting & reflecting (cassegrain) telescope.
 STP18 **Eye and its Defects** : TS of eyeball, Presbyopia, Cataract, Myopia (near sightedness), Hypermetropia (far sightedness), Astigmatism.
 STP19 **Electric Current-Sources-Effects** : Sources - Voltaic cell, Daniel cell, Dry cell. Effects - Heating, Lighting, Chemical, Magnetic.
 STP20 **Static Electricity** : Electroscope, Vande-Graff generator, Electrostatic induction, Lightning spark, Photocopier.
 STP21 **Current Electricity** : Electric current, Conventional current, voltaic cell, Wiring of a plug, Transmission of electricity, Electric circuit inside a torch and a house.
 STP22 **Ohm's Law & Electrical Resistance** : Ohm's law, Factors affecting resistance, Resistance of series and parallel combination.
 STP23 **Electric Circuit's Components Symbols**
 STP24 **Magnetism** : Earth's magnetic field, Magnetic compass, Types of magnets, Theory of magnetism, Van allen radiation belt.
 STP25 **Properties of a Magnet, Making a Magnet** : Electromagnet, single/double touch method, solenoid, properties, storage & handing, magnetic induction, repulsion - test for magnetism.
 STP26 **Electromagnetism** : Oersted's experiment, Magnetic field of a current carrying conductor maxwell's right hand grip rule, Fleming's left hand rule (motor effect), Applications.



Printed in multicolour on Art Paper duly Laminated. English only size 58x90 cm. Price Each Rs. 269.00 (B)
 Printed in multicolour on PVC free, non-tearable Rexine size 80x115 cm. (RM) Price Each Rs. 1049.00 (B)

PHYSICS

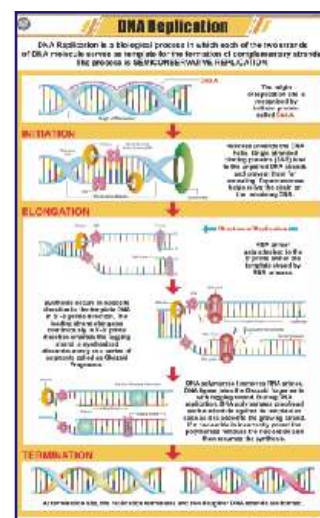
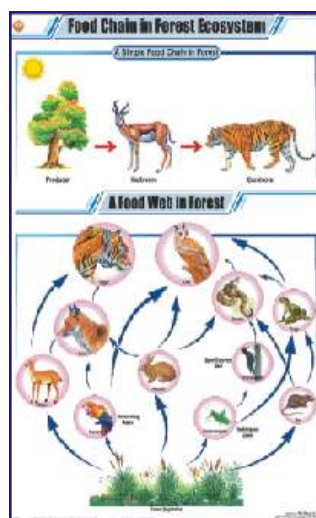
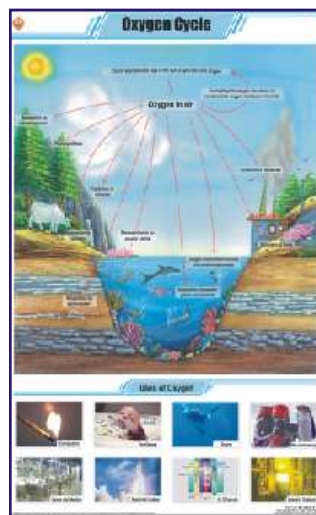
- STP27 **Electromagnetic Induction** : Induction using bar magnet, Self-induction, Mutual induction, Fleming's right hand rule, Applications.
- STP28 **Electric Motor** : simple DC & AC motor, commercial electric motor, applications.
- STP29 **Electric Bell** : Working principle of an electric bell.
- STP30 **Electric Generator** : AC & DC generator.
- STP31 **Dynamo** : Dynamo principle, Bicycle bottle dynamo, Faraday's disc dynamo, Pixii's commutated DC dynamo.
- STP32 **Force** : Effects of force, Combining force.
- STP33 **Friction** : Static, kinetic & rolling friction. Advantages & disadvantages of friction, Methods of increasing or reducing friction.
- STP34 **Gravitation** : Universal law of gravitation, Gravitational constant G, Acceleration due to gravity, Weight, Weightlessness.
- STP35 **Moment and Couple** : Moment (Torque), Principle of moment, Couple & its applications.
- STP36 **Work and Power** : Work & power explained, special causes for work done.
- STP37 **Nuclear Fusion** : Proton-Proton chain, CNO cycle, Controlled fusion, Hydrogen bomb.
- STP38 **Nuclear Fission** : Chain reaction, Spontaneous fission, Controlled fission, Neutron induced fission, Breeding plutonium-239, Enrichment of nuclear fuel.
- STP39 **Nuclear Reactor** : Pressurized water reactor, Fast nuclear reactor.
- STP40 **Radioactivity** : Types of radioactive radiations, Penetrating power, Carbon dating, Decay of uranium-238.
- STP41 **Radio Telescope** : Radio telescope, Astronomical interferometers.
- STP42 **X-Ray** : Characteristics, production and uses of X-rays.
- STP43 **Television** : Picture tube, color triplets, transmission mechanism.
- STP44 **Multistage Rocket** : Stage principle, chemical rocket types, component of rocket system, engine operation.
- STP45 **Wind Mill** : Typical windmill, principle, horizontal & vertical axis wind turbine.
- STP46 **Petrol Engine** : Four stroke petrol engine and its working.
- STP47 **Steam Engine** : Simple steam engine working and principle.
- STP48 **Diode** : Types & symbols.
- STP49 **Universe I (Life Cycle of a Star)**
- STP50 **Universe II (Comets & Meteors)** : Structure of comet, Meteorite strike, Types of meteorites.
- STP51 **Star Map** : Star map of northern and southern heaven, 12 star constellation.
- STP52 **Newton's Laws of Motion** : Newton's first, Second & third law of motion.
- STP53 **Simple Electric Circuit** : Open & close circuit, Parallel circuit, Series circuit.
- STP54 **Measuring instruments** : Screw gauge, vernier caliper, cathode ray oscilloscope, spectrometer, calorimeter, voltmeter, ammeter, galvanometer. **NEW**
- STP55 **Energy** : Types of energies, law of conservation, mechanical energy - Kinetic energy & Potential Energy. **NEW**
- STP56 **Heat and temperature** : SI units, volumetric expansion, specific heat, latent heat, conduction, convection, radiation, temperature & thermal equilibrium, celsius, fahrenheit, kelvin scales. **NEW**
- STP57 **Different Types of Satellite** : Weather, communication, astronomical, remote sensing, earth observation, navigation, miniaturised satellites. **NEW**



Printed in multicolour on Art Paper duly Laminated. English only size 58x90 cm. Price Each Rs. 269.00 (B)
 Printed in multicolour on PVC free, non-tearable Rexine size 80x115 cm. (RM) Price Each Rs. 1049.00 (B)

GENERAL

- STG01 **The Cell Theory** : Prokaryotic, Eukaryotic, Unicellular, Multicellular, Cell theory.
- STG02 **DNA** : Z DNA, B DNA, Double helix structure, Nucleotide.
- STG03 **RNA** : rRNA, mRNA, tRNA, Flow of genetic information, Virus structure.
- STG04 **Levels of Organization**
- STG05 **Origin of Life** : Miller and Urey experiment, Steps in origin of life, Coacervates.
- STG06 **Cellular Respiration (Kreb's Cycle)** : Glycolysis, Krebs TCA cycle, electron transport chain.
- STG07 **Animal Husbandry** : Breeding, Feeding, Weeding, Heeding.
- STG08 **Economic Plants**
- STG09 **Basic Agricultural Practices**
- STG10 **Medicinal Plants - I**
- STG11 **Medicinal Plants - II**
- STG12 **Energy Needs** : Hydro, Chemical, Solar, Wind, Bio, Magnetic, Nuclear, Sound & Light energy.
- STG13 **Fossil Fuels** : Types-solid, liquid, gaseous, calorific value, characteristics coal & petroleum, Fractional distillation.
- STG14 **Petroleum & Natural Gas** : Formation of petroleum, Oil drilling, Fractional distillation.
- STG15 **Renewable Sources of Energy**
- STG16 **Nuclear Energy** : Nuclear energy power plant, Fission, Fusion, Atomic bomb, Hydrogen bomb, Uses, Effects.
- STG17 **Bio-Gas** : Fixed dome type, Floating gas holder type.
- STG18 **Nitrogen Cycle**
- STG19 **Oxygen Cycle**
- STG20 **Carbon Cycle**
- STG21 **Fire & Fire Extinguishers** : Classification of fire, Uses of fire extinguisher, Types of fire extinguishers. Water-CO₂ type, Mechanical foam (AFFF) type, Dry chemical powder (DCP) type, Carbon dioxide type.
- STG22 **Soil- A natural Resource** : Uses, Soil erosion, Soil conservation, Soil pollution.
- STG23 **How Soil is formed and Soil Profile** : Agents of weathering, Layers of soil.
- STG24 **Types of Soils in India**
- STG25 **Food Chain in Forest Ecosystem** : Simple food chain, Food web.
- STG26 **Solar Cooker** : Solar cooker, - Box type, Parabolic type, Panel type.
- STG27 **Water Harvesting**
- STG28 **Purification of Water** : Boiling, Distillation, Filtration, Chlorination, Reverse osmosis, Domestic RO system.
- STG29 **Poultry** : Indegenious breeds, Exotic breeds, Equipments, Behaviour under brooders.
- STG30 **Sericulture (L.H. Silkworm)** : Stages of silk production, Life cycle of bombyx mori.
- STG31 **Apiculture (L.H. Honeybee)** : Queen honey bee, Artificial bee hive, Honey extractor & extraction.
- STG32 **Food Pyramid** : Food pyramid, Components, Balanced diet.
- STG33 **Microorganisms**
- STG34 **Mutation** : Insertion, Duplication, Deletion, Inversion, Translocation, Frame shift, Point mutation.
- STG35 **Enzymes** : Structure, Mechanism, Classification, Enzyme activity.
- STG36 **DNA Replication** : Initiation, Elongation, Termination.
- STG37 **Osmosis** : Molecular view, osmosis in isotonic, hypotonic and hypertonic solutions.
- STG38 **Evidence of the Evolution of Life** : Fossil record, anatomical comparison, comparative embryology.
- STG39 **Food Chain in Pond Ecosystem**
- STG40 **Food Chain in Desert Ecosystem**



These charts are highly illustrative.



SCIENCE & TECHNOLOGY CHARTS- SPECIAL SERIES

Printed in multicolour on Polyart Synthetic Paper

size 70x100 cm. Price Each Rs. 619.00 (B)

Printed in multicolour on PVC free, non-tearable Rexine

size 80x115 cm. (RM) Price Each Rs. 1049.00 (B)

STB500-SM Chloroplast

STB501-SM Phototropism & Geotropism

STC500-SM Modern Periodic Table & Its Uses

STC501-SM Dobereiner's Triads

STC502-SM Newlands' Octaves Periodic Table

STC503-SM Discovery of Proton Neutron Electron

STC504-SM Structure of Flame

STG500-SM Citric Acid Cycle

STG501-SM Mitochondria

STP500-SM Sonar



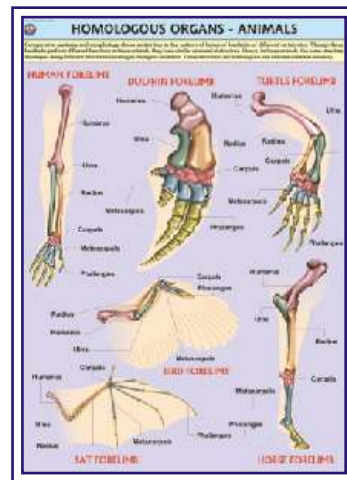
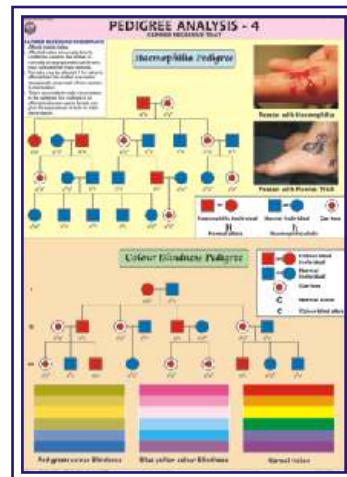
GENETICS AND EVOLUTION CHARTS

Printed in multicolour on Polyart Synthetic Paper

size 70x100 cm. Price Each Rs. 349.00 (B)

Printed in multicolour on PVC free, non-tearable Rexine

size 80x115 cm. (RM) Price Each Rs. 1049.00 (B)

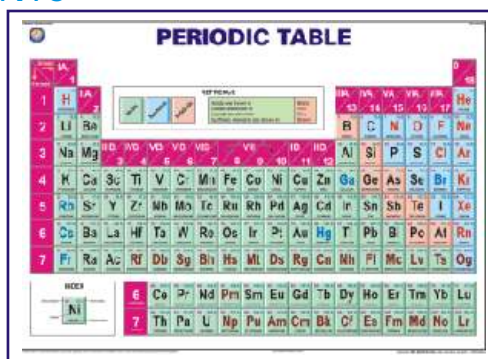
GE01S **Standard Symbols And Sample Pedigree (Pedigree Analysis-1)** : showing standard symbols used in Pedigree Analysis and Sample Pedigree.GE02S **Autosomal Dominant Trait (Pedigree Analysis-2)** : showing Autosomal Dominant Trait Pedigree such as Myotonic Dystrophy and Tongue Curler Pedigree.GE03S **Autosomal Recessive Trait (Pedigree Analysis-3)** : showing Autosomal Recessive Trait Pedigree such as Inheritance of Attached Ear Lobe and Inheritance of Sickle Cell Anaemia.GE04S **X-Linked Recessive Trait (Pedigree Analysis-4)** : showing X-linked Recessive Trait Pedigree such as Haemophilia and Colour Blindness Pedigree.GE05S **X-Linked Dominant Trait (Pedigree Analysis-5)** : showing X-linked Dominant Trait Pedigree such as Hypophosphatemia and Droopy Eyelids Pedigree.GE06S **Y-Linked And Mitochondrial Inheritance (Pedigree Analysis-6)** : showing Y-linked Trait - Hairy Ear and Mitochondrial Inheritance Pedigree.GE07S **Homologous Organs - Animals**: showing Forelimbs of Bat, Turtle, Horse, Human, Bird and Dolphin demonstrating Homology.GE08S **Analogous Organs - Animals**: showing Wings of Bird, Butterfly, Pterosaur and Bat demonstrating Analogy.GE09S **Homologous Organs - Plants**: showing thorn of Bougainvillea, tendrils of Cucurbita, fleshy cylindrical stem of Euphorbia, fleshy flattened stem of Opuntia, leafy shoots of Chrysanthemum and pineapple representing Plant Homology.GE10S **Analogous Organs - Plants**: showing thorn of Pyracantha, spine of Berberis vulgaris, prickles of Prosopis grandulosa and stipular spines of Black Locust representing Plant Analogy.GE11S **Hybridisation-1 (Monohybrid Cross)** : Cross between Purple coloured and White coloured flower Pea Plant demonstrating inheritance of one dominant character and expression of recessive parental trait without blending in F₂ generation.GE12S **Hybridisation-2 (Dihybrid Cross)** : Cross between Pea Plants differing in two traits (pod colour & plant height) showing segregation of one pair of character is independent of the other pair of characters.GE13S **Hybridisation-3 (Incomplete Dominance)** : Cross between true breeding Red and White Snapdragon flower plants showing one character is not completely dominant over other.

CHEMISTRY LAB DISPLAY CHARTS

PERIODIC CHART OF ELEMENTS



A Most detailed chart printed in multi colours showing Solids, Liquids and Gases in separate distinctive colours together with their Atomic Numbers, Density, Atomic Radius, Melting Point, Electronic Structure, Electro negativity, First Ionization Energy, Oxidation State and Crystal structure.



PT01 Size 140 × 100 cm Laminated

PT02 Size 100 × 70 cm Laminated

PT03S Size 100 × 70 cm Synthetic

PT03-RM Size 115x80 cm Rexine

PT04 Size 50 × 35 cm Paper

PT05 Size 50 × 35 cm Laminated w/o rollers

PT06 Size 100 × 75 cm Paper folded in Book form

PT07S Size 100 x 70 cm Mendeleev's Periodic Chart Synthetic

PT08 Size 90 × 55 cm Laminated

Rs. 569.00 (B)

Rs. 249.00 (B)

Rs. 349.00 (B)

Rs. 1049.00 (B)

Rs. 19.00 (B)

Rs. 49.00 (B)

Rs. 79.00 (B)

Rs. 349.00 (B)

Rs. 259.00 (B)

PT09 Size 96 x 70 cm Periodic Chart
Elementary RS. 259.00 (B)

FOR 3-D INTERACTIVE PERIODIC TABLE

Please see page S-52



LABORATORY SAFETY

Price Rs. 349.00 (B)

Showing basic safety measures to be followed while working in a chemistry laboratory. Printed on Polyart Synthetic Paper.

Size 70 x 100 cm.

Code CL01S



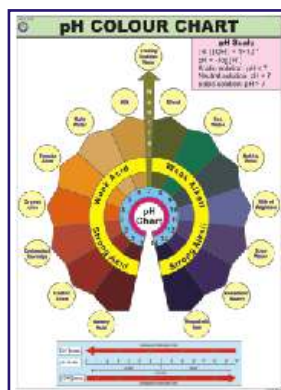
LABORATORY TECHNIQUES

Price Rs. 349.00 (B)

Showing various procedures and techniques generally used in a chemistry laboratory. Printed on Polyart Synthetic Paper.

Size 70 x 100 cm.

Code CL02S



pH COLOUR CHART

Price Rs. 349.00 (B)

Reference colours indicated by universal indicator with different acidic or basic substances to show their approximate pH values. Printed on Polyart Synthetic Paper. Size 70 x 100 cm.

Code CL03S



LABORATORY FIRST AID

Price Rs. 349.00 (B)

Showing various first aid techniques and procedures used during an accident in a Laboratory. Printed on Polyart Synthetic Paper.

Size 70 x 100 cm.

Code CL04S

LAB SAFETY CHARTS

Size 30 × 45 cm, Printed on 300 gsm art paper & lamination on both sides.

LSC01 Protect yourself, Dress appropriately

LSC02 Always wash your hands before and after the experiment

LSC03 Keep the testing area and vessels clean before & after the experiment

LSC04 Never eat or drink while performing experiments

LSC05 Avoid using glassware that is cracked or chipped

LSC06 Keep your face away from reaction vessels

LSC07 Never suck liquid chemicals by mouth, Use a pipette bulb

LSC08 Beware! Hot & cold look a like

LSC09 Never touch or taste chemicals

LSC10 Always experiment under supervision, Inform supervisor in case of accident

LSC11 Act responsibly, Don't fool around in the laboratory

LSC12 Always keep the fire extinguisher & first aid box within reach

LSC_12 complete set of above 12 charts

Price Rs. 1080.00 (B) per set of 12



Laminated with thick plastic film on both sides & fitted with superior plastic rollers.

CHARTS ON FOOD AND NUTRITION

Printed in multicolour on Maplitho Paper duly Laminated

Printed in multicolour on PVC free, non-tearable Rexine

English & Hindi combined.

size 70x100 cm. Price Each Rs. 289.00 (B)

size 80x115 cm. (RM) Price Each Rs. 1049.00 (B)

FN01 OUR FOOD : Chart shows various components and functions of food. It also illustrates food pyramid mentioning balance diet and daily requirement of nutrients by different age groups.

FN02 PROTEINS : Chart shows both animal and plant sources of protein. It also explains various functions performed by proteins in our body and some special conditions of high protein needs.

FN03 FATS : Chart shows a brief classification of fats with a mention of essential fatty acids. It also shows some of the important functions and sources of fats.

FN04 CARBOHYDRATES : Chart shows classification of carbohydrates as simple and complex with their various functions in the body. It also shows various foods rich in carbohydrates.

FN05 VITAMINS : Good explanatory chart depicting both fat soluble and water soluble vitamins with their various sources and reasons of requirement in the body.

FN06 MINERALS : Important minerals like Sodium, Iron, Calcium, Iodine etc. required in our body to live a healthy life are shown in the chart. Chart also shows various functions they perform and their sources.

FN07 WATER & ROUGHAGE : Chart shows the importance of water and roughage and some major functions performed by them in the body. Chart also gives a good knowledge about their sources.

FN08 DEFICIENCY DISEASES : Chart shows the havoc conditions arised due to deficiency of various nutrients in the body and their symptoms. The understanding of chart will indicate the importance of good balanced diet.

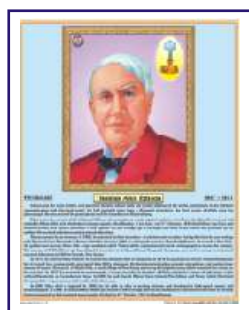
FN09 OVERNUTRITION DISORDERS : Chart shows that not only deficiency but also the over consumption of food is not good for health. Various overnutritional disorders with their causes and symptoms are depicted in the chart.

FN10 Food's Nutritive Value : Chart shows the nutrient's composition of various common foodstuffs in a tabular form.



LIFE SKETCH OF SCIENTISTS

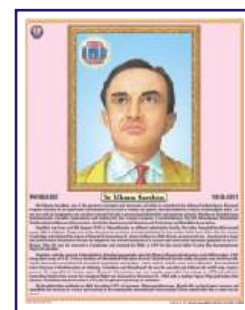
Size 45 × 57 cm Approx. Laminated and fitted with plastic rollers.



LSS01 Albert Einstein
LSS02 A.P.J. Kalam
LSS03 Archimedes
LSS04 Birbal Sahni
LSS05 C.V. Raman
LSS06 Darwin
LSS07 Galileo Galilie

LSS08 H.J. Bhabha
LSS09 J.C. Bose
LSS10 Louis Pasteur
LSS11 Madam Curie
LSS12 Meghnad Saha
LSS13 Mendeleev
LSS14 Newton

LSS15 Raja Ramanna
LSS16 Ramanujan
LSS17 Rutherford
LSS18 S.N. Bose
LSS19 Sarabhai
LSS20 Thomas Edison



(Available in English as well as in Hindi) Each Rs. 149.00 (B)

(Above product code is for English. Please add H to the code for Hindi)

CHARTS ON AIDS

Printed in multicolour on Polyart Synthetic Paper

size 70x100 cm. Price Each Rs. 349.00 (B)

Printed in multicolour on PVC free, non-tearable Rexine

size 80x115 cm. (RM) Price Each Rs. 1049.00 (B)

- AS01S HIV** : showing structure and mechanism of infection of Human Immunodeficiency Virus
- AS02S Transmission of HIV** : explaining different ways which can spread the HIV infection and cause AIDS.
- AS03S Prevention** : showing various measures which, when adopted, prevent transmission of HIV infection.
- AS04S How AIDS is not transmitted** : showing various routine tasks which are not involved in transmission of HIV.
- AS05S Progress of Infection** : showing how HIV infection typically progresses through various stages.
- AS06S Opportunistic Diseases** : depicting complications which an AIDS patient develops that otherwise wouldn't normally occur in a person with a healthy immune system.
- AS07S Sexually Transmitted Diseases** : showing various sexually transmitted diseases which increase the chances of acquiring HIV infection by an individual when exposed to the virus.
- HP26S Human Immune System** : showing different organs involved in a healthy immune mechanism. As AIDS progressively weakens the immune system, chart gives an outline of functions of Immune System to better understand what AIDS can do.



DISASTER MANAGEMENT CHARTS

Printed in multicolour on Maplitho Paper duly Laminated

size 70x100 cm. Price Each Rs. 289.00 (B)

Printed in multicolour on PVC free, non-tearable Rexine

size 80x115 cm. (RM) Price Each Rs. 1049.00 (B)

English & Hindi combined.

- DMS01** What is a Disaster
- DMS02** Disaster Management Cycle-1 **NEW**
- DMS03** Disaster Management Cycle-2 **NEW**
- DMS04** Earthquake
- DMS05** Tsunami
- DMS06** Flood
- DMS07** Cyclone
- DMS08** Forest Fire
- DMS09** Landslide **NEW**
- DMS10** Nuclear Disaster **NEW**
- DMS11** Chemical Disaster **NEW**
- DMS12** Biological Disaster **NEW**



ENVIRONMENTAL SCIENCE

Printed in multicolour on Maplitho Paper duly Laminated

size 50x70 cm. Price Each Rs. 179.00 (B)

Printed in multicolour on PVC free, non-tearable Rexine

size 80x115 cm. (RM) Price Each Rs. 1049.00 (B)

English Only.

ES01 Garbage Management **NEW**

ES02 Sewage Treatment Plant **NEW**

ES03 Global warming & Greenhouse effect **NEW**



(B) - GST@12% is included in the price.

BIOLOGY MODELS

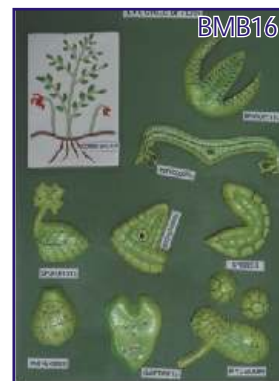
BOTANY MODELS

Made of Fiber Glass on MDF Board. Each Model size 60 x 45 cm Price Rs. 3499.00 (A) each

- BMB01 Plant Cell
- BMB02 Germination of Seed
- BMB03 Fertilization & Angiosperms
- BMB04 Plant Cell Meiosis
- BMB05 Plant Cell Mitosis
- BMB06 L. S. Flower
- BMB07 L. S. Ovary

- BMB08 T. S. Monocot Root
- BMB09 T. S. Dicot Root
- BMB10 T. S. Monocot Stem
- BMB11 T. S. Dicot Stem
- BMB12 T. S. Monocot Leaf
- BMB13 T. S. Dicot Leaf
- BMB14 Root Tip

- BMB15 Life Cycle : Moss
- BMB16 Life Cycle : Fern
- BMB17 Life Cycle : Fungus
- BMB18 Spirogyra
- BMB19 Pitcher Plant
- BMB20 Funaria Plant



ZX-2200E

Types of Ovules

- Price Rs. 5339.00 (A)
- 4 pieces model on board.
- Model shows anatropous, orthotropous, amphitropous and hemi-anatropous ovules.
- Size : 45x60x3
- 9 parts labeled in total.



ZX-2600E

L.H. of Angiosperm

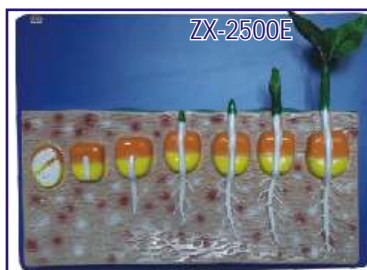
- Price Rs. 5339.00 (A)
- Model is a set of 19 piece.
- Model is mounted on board to show the life cycle of an angiosperm.
- Size : 60x45x3 cm.
- 13 parts labeled in total.



ZX-2500E

Monocot Seed Germination

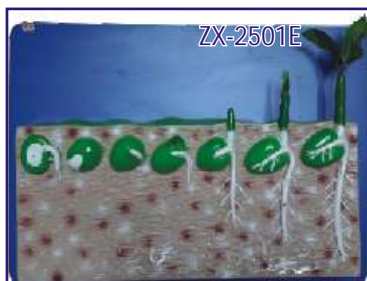
- Price Rs. 5339.00 (A)
- Stages of germination (Hypogeal) in maize is shown.
- Mounted on wooden base.
- Size: 56 x 41 x 9 cm
- 8 parts labeled in total



ZX-2501E

Dicot Seed Germination

- Price Rs. 5339.00 (A)
- Stages of germination (Hypogeal) in pea is shown.
- Mounted on wooden base.
- Size: 56 x 41 x 9 cm.
- 8 parts labeled in total



MODELS OF FLOWERS



Made of Fiber Glass on stand.

Price Rs. 2489.00 (A) each

- BMF01 Typical Flower
- BMF03 Rosaceae Flower

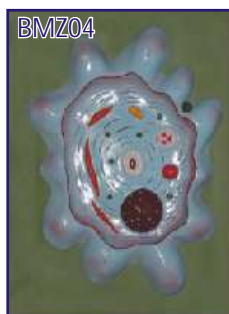
ZOOLOGY MODELS

Made of Fiber Glass on MDF Board. Each Model Size 60 x 45 cm Price Rs. 3499.00 (A) each

BMZ01 Animal Cell
BMZ02 Animal Cell Meiosis
BMZ03 Animal Cell Mitosis
BMZ04 Amoeba
BMZ05 Paramecium
BMZ06 Hydra
BMZ07 Euglena

BMZ08 Malarial Parasite
BMZ09 Bacteria
BMZ10 Virus
BMZ11 Frog Dissection
BMZ12 Rat Dissection
BMZ13 Fish Dissection
BMZ14 Rabbit Dissection

BMZ15 Development of Frog
BMZ16 Life History of Silk Worm
BMZ17 Life History of Mosquito
BMZ18 Life History of Honey Bee
BMZ19 Life History of Butterfly
BMZ20 Life Cycle of Tapeworm



ZX-3200E Tape Worm

- Price Rs. 10679.00 (A)
- Set of 8 pieces mounted on board shows scolices of beef tapeworm (Taenia Saginla), pork tapeworm (Taenia Solium), mature egg, larval stage tapeworm and longitudinal sections of gravid, immature and mature proglottid.
- Size: 55x40x6 cm.
- 27 parts labeled in total.



ZX-3201 Hydra

- Price Rs. 4979.00 (A)
- 4 piece model mounted on board.
- Anatomical features shown include ectoderm, mesoglea, coelenteron, male testis and female egg cells, buds, hypostome, nematoblast cells, cnidoblast etc.
- 28 parts are labeled in total.



ZX-3213PN Frog Dissection Model

- Price Rs. 7369.00 (A)
- Size: 39x33.5x14 cm.
- Made of plastic.
- 67 parts labelled in total.
- Supplied with plastic base for display.
- Shows dissected ventral and dorsal side views.



ZX-3208E Bony Fish General Anatomy

- Price Rs. 11229.00 (A)
- Replica of a bony fish (perch) on stand.
- Longitudinally dissected in 5 parts.
- External features are shown on one side & internal anatomy is on other side.

- Removable parts are magnetically secured in position.
- 42 parts labeled in total. Life size.



ZX-3214E Frog Model Magnetic Dissection

- Price Rs. 7739.00 (A)
- Size: 19.8x15.8x8 cm.
- Made of PVC.
- 16 parts labelled in total.
- Supplied with wooden base for display.

A vivid display will go deep down in memory.

SPECIAL MODELS ON HUMAN ANATOMY

HA101A HUMAN BODY TORSO - Torso with head with detachable internal structure of Head and neck, Organs of Thorax and abdomen cavities of the viscera can be emptied, for study of blood vessels. Dissectable in 12 parts made of Fibre Glass painted in natural colours. Made of Fiber Glass. Magnetic. Life Size
Rs. 17489.00 (A)

HA101 HUMAN BODY - Torso with head with detachable internal structure of Head and neck, Organs of Thorax and abdomen cavities of the viscera can be emptied, for study of blood vessels. Dissectable in 12 parts made of Fibre Glass painted in natural colours. Made of Fiber Glass. Life Size Non magnetic.
Rs. 13809.00 (A)

HA101U Human Body- Torso Life size unisex 
Rs. 21629.00 (A)

HA102 Human Body - Torso Small size
Rs. 3689.00 (A)

HA103 HUMAN SKELETON - Life size made of fibre glass. All the bones shoulder & hip joints clearly depictable
Rs. 4609.00 (A)

HA103S Stand for above
Each Rs. 3039.00 (A)

HA104 HUMAN SKELETON - Plastic size 70 cm with stand.
Rs. 1659.00 (A)

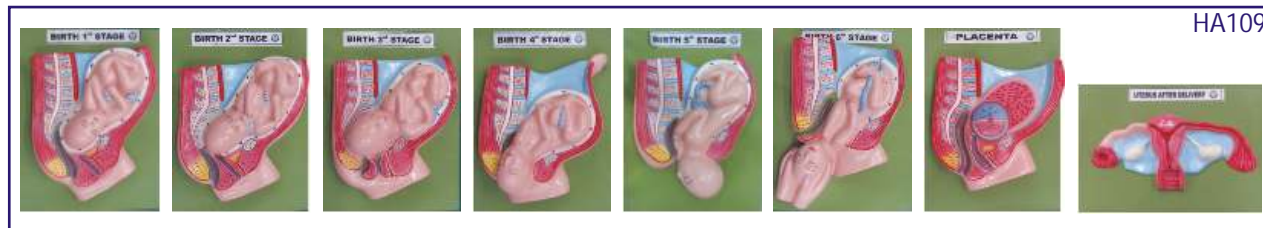
HA105 HUMAN SKELETON - Plastic size 40 cm with stand.
Each Rs. 319.00 (A)

HA106 Dummy with Doll - made of Fibre Glass
Each Rs. 7549.00 (A)

HA106A Dummy Baby for Dummy with Doll
Each Rs. 2399.00 (A)

HA107 Female Pelvis - with child
Each Rs. 3589.00 (A)

HA108 Female Pelvis - with reproductive organs
Each Rs. 3589.00 (A)



HA109 Delivery Process Models - set of 8
Set Rs. 14729.00 (A)

HA110 Development of Fetus/Embryo - set of 9
Set Rs. 6909.00 (A)



HA110L Development of Fetus/Embryo - set of 9 Large size set Rs. 16759.00 (A)

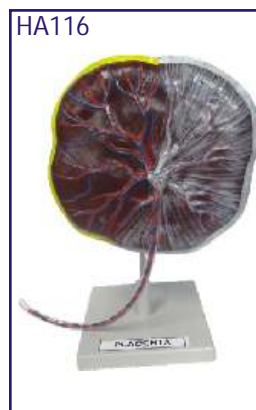
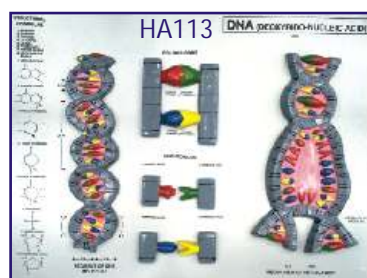
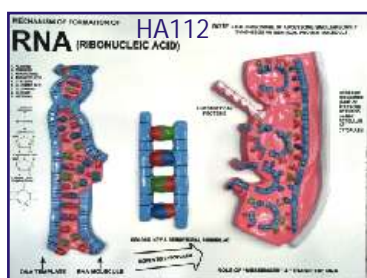
HA111F Full Size Human Female Body - Fibre Glass
Showing organs & muscles
Each Rs. 60749.00 (A)

HA111M Full Size Human Male Body - Fibre Glass
Showing organs & muscles
Each Rs. 60749.00 (A)

HA112 RNA - 60 x 45 cm
Each Rs. 3499.00 (A)

HA113 DNA - 60 x 45 cm
Each Rs. 3499.00 (A)

HA116 Human Placenta Model - made of Fiber Glass
Each Rs. 2769.00 (A)



SPECIAL MODELS ON HUMAN ANATOMY

Dissectable Models (Fibre Glass)

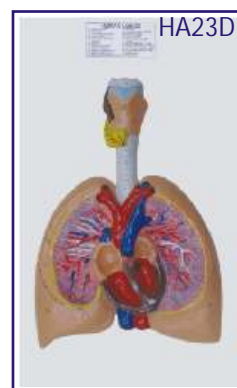
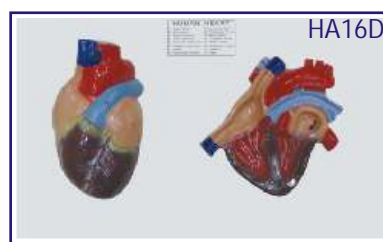
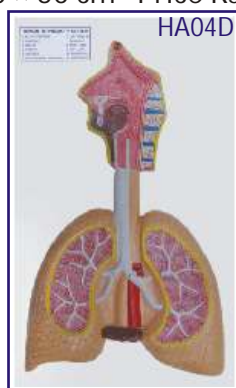
- HA126 Eye Ball
 HA127 Human Heart
 HA128 Human Ear
 HA129 Human Brain
 HA130 Human Kidney
 HA131 Human Lungs
 HA201 Nursing Manikin Female Made of Fibre Glass Life Size
 HA202 Nursing Manikin Male Made of Fibre Glass Life Size
 HA506 Structure of Tooth on Board **NEW**
 HA509 Shoulder Joint Model Made of Fibre Glass **NEW**
 HA510 Hip Joint Model Made of Fibre Glass **NEW**
 HA511 Knee Joint Model Made of Fibre Glass **NEW**
 HA512 Elbow Joint Model Made of Fibre Glass **NEW**
 HA513 Foot Joint Model Made of Fibre Glass **NEW**
 HA514 Hand Joint Model Made of Fibre Glass **NEW**

- Each Rs. 739.00 (A)
 Each Rs. 739.00 (A)
 Each Rs. 739.00 (A)
 Each Rs. 739.00 (A)
 Each Rs. 739.00 (A)
 Each Rs. 739.00 (A)
 Each Rs. 35899.00 (A)
 Each Rs. 35899.00 (A)
 Each Rs. 1019.00 (A)
 Each Rs. 739.00 (A)
 Each Rs. 1109.00 (A)
 Each Rs. 739.00 (A)
 Each Rs. 739.00 (A)
 Each Rs. 739.00 (A)
 Each Rs. 739.00 (A)



HUMAN ANATOMY 3-D MODELS

Deluxe Quality, Made of Fiber Glass, Mounted on Wooden Board
 Size 30 × 50 cm Price Rs. 1569.00 (A) each



- HA01D Teeth
 HA02D Circulatory System
 HA03D Digestive System
 HA04D Respiratory System
 HA05D Nervous System
 HA06D Skeleton
 HA07D Head & Neck
 HA08D Skin
 HA09D Mouth
 HA10D Tongue

- HA11D Spinal Cord
 HA12D Stomach
 HA13D Liver
 HA14D Kidney
 HA15D Brain
 HA16D Heart
 HA17D Eye
 HA18D Ear
 HA19D Male Pelvis
 HA20D Female Pelvis

- HA21D Reproductive Organs (Female)
 HA22D Reproductive Organs (Male)
 HA23D Lungs with Heart & Larynx
 HA24D Skull
 HA25D Excretory System
 HA26D Endocrine System Male
 HA27D Endocrine System Female
 HA28D Muscular System Front View
 HA29D Muscular System Back View
 HA30D Nose

The models are manufactured under expert supervision.

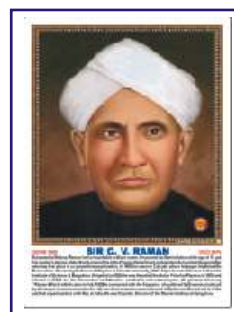
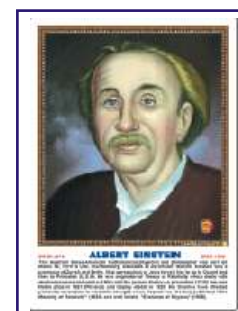
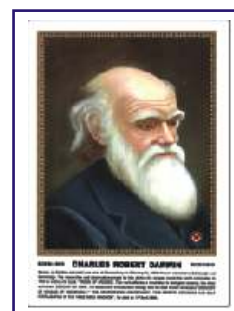
PHOTOS OF GREAT PERSONALITIES

MATT CANVAS LAMINATED ON NUWOOD BOARD

GREAT SCIENTISTS

Size 31 × 43 cm Approx (GS01P - GS140P) Each Rs. 709.00 (A)
 Size 45 × 60 cm Approx (GS01PS - GS140PS) Each Rs. 2119.00 (A)

GS01	Charles Robert Darwin (B)	GS51	A. P. J. Abdul Kalam (P)
GS02	Gregor Mendel (B)	GS52	Dr. Vikram Sarabhai (P)
GS03	Lamarck (B)	GS53	Aryabhata (P & M)
GS04	Louis Pasteur (B)	GS54	Dr. S. S. Joshi (C)
GS05	Dr. William Harvey (B)	GS55	Sir Alexander Fleming (B)
GS06	Leonardo-da-Vinci (B)	GS56	D. Mata Parshad (C)
GS07	Sir Joseph Lister (B)	GS57	Benjamin Franklin (P)
GS08	Anton Van leeuwenhoek (B)	GS58	Ernest Rutherford (P & C)
GS09	Carl Von Linnaeus (B)	GS59	Dr. Raj Ramanna (P)
GS10	Edward Jenner (B)	GS60	Nicholas Copernicus (A & P)
GS11	Sir James Young Simpson (B)	GS61	Alessandro Volta (P)
GS12	Thomas Henry Huxley (B)	GS62	Alfred Nobel (C)
GS13	Sir Edwin Ray Lankester (B)	GS63	Anton Henry Bekuerel (P)
GS14	Sir Ronald Ross (B)	GS64	Atovan Gerok (P)
GS15	Hugo De-vries (B)	GS65	Benjamin Thomson (P)
GS16	Sir Charles Bell (B)	GS66	Crick (B)
GS17	Alfred Russel Wallace (B)	GS67	Watson (B)
GS18	Sir J. C. Bose (B)	GS68	Edward Victor Aplaton (P)
GS19	Dr. Birbal Sahni (B)	GS69	James Clark Maxwell (P)
GS20	Sunder Lal Hora (B)	GS70	Jessek Luious Gelusale (P & C)
GS21	Galileo Galilee (P)	GS71	Johns Kepeler (A & P)
GS22	Sir Isaac Newton (P)	GS72	Kalpna Chawla (A & P)
GS23	Sir C. V. Raman (P)	GS73	Max Planck (P)
GS24	Dr. H. J. Bhabha (P)	GS74	Panchanan Maheshwari (B)
GS25	Archimedes (P)	GS75	Varah Mihir (A, P & M)
GS26	Albert Einstein (P)	GS76	Sunita Williams (P)
GS27	Thomas Alva Edison (P)	GS77	James Watt (P)
GS28	Robert Boyle (P & C)	GS78	Andre Marie Ampere (P & M)
GS29	Marie Curie (P & C)	GS79	A. Graham Bell (P)
GS30	Michael Faraday (C)	GS80	Edwin Powell Hubble (A & P)
GS31	John Dalton (C)	GS81	Rakesh Sharma (A)
GS32	Dr. P. C. Ray (C)	GS82	M. S. Swaminathan (B)
GS33	Dr. H. G. Khorana (B & C)	GS83	Robert Hooke (P, B & A)
GS34	Dr. S. S. Bhatnagar (C)	GS84	S. R. Ranganathan (M & Lib.)
GS35	S. Ramanujan (P & M)	GS85	J. B. S. Haldane (B)
GS36	Antoine Laurent Lavoisier (C)	GS86	Guglielmo Marconi (P)
GS37	William Ramsay (C)	GS87	Wilbur Wright (P)
GS38	Humphry Davy (C)	GS88	Orville Wright (P)
GS39	August Weismann (B)	GS89	Neil Armstrong (P & A)
GS40	Joseph Priestley (C)	GS90	Wihelm Roentgen (P)
GS41	Aristotle (B)	GS91	S. Chandrasekhar (P & A)
GS42	Dmitri I. Mendeleef (C)	GS92	Lord Kelvin (P & M)
GS43	Burbank Luther (B)	GS93	Charles Babbage (P & M)
GS44	S. N. Bose (P)	GS94	Friedrich Wohler (C)
GS45	M. N. Saha (P)	GS95	Frederick William Herschel (A)
GS46	K. S. Krishnan (P)	GS96	J. J. Berzelius (C)
GS47	K. N. Bahl (B)	GS97	James Chadwich (P)
GS48	J. J. Thomson (P)	GS98	Dr. Vijay P. Bhatkar (P)
GS49	Neils Bohr (P)	GS99	C. N. R. Rao (C)
GS50	Gilbert Newton Lewis (C)	GS100	George Boole (M)



Photos size 31 × 43 cm

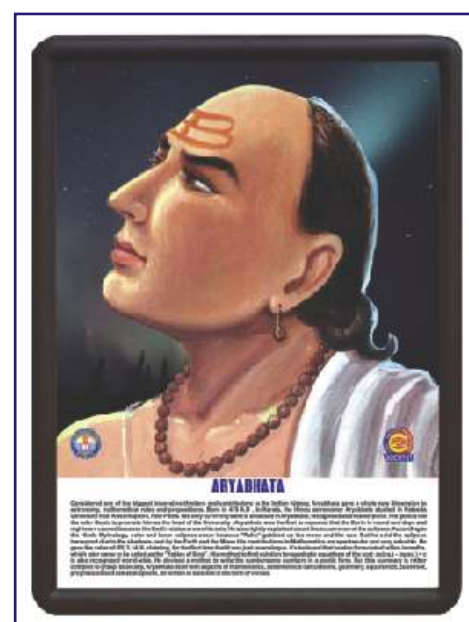


Photo size 45 × 60 cm

(A) Astronomer, (B) Biologist, (C) Chemist, (M) Mathematician, (P) Physicist

GREAT SCIENTISTS

Size 31 × 43 cm Approx (GS01P - GS140P) Each Rs. 709.00 (A)
 Size 45 × 60 cm Approx (GS01PS - GS140PS) Each Rs. 2119.00 (A)

GS101 Albert Abraham Michelson (P)	GS121 Venkatraman Ramakrishnan (C)
GS102 Stephen Hawking (P & A)	GS122 William Roxburgh (B)
GS103 Amedeo Avogadro (P)	GS123 Erwin Schrodinger (P)
GS104 Johannes Gutenberg (P)	GS124 Nikola Tesla (P)
GS105 Pierre Curie (P,C)	GS125 John Vincent Atanasoff (P)
GS106 Hans Christian Oersted (P & C)	GS126 Heinrich Hertz (P)
GS107 Henry Moseley (P)	GS127 Charles Francis Jenkins (P)
GS108 John Alexander Reina Newlands (C)	GS128 Jacobus Henricus Van'thoff (P & C)
GS109 Camillo Golgi (B)	GS129 Linus Carl Pauling (B & C)
GS110 Zacharias Janssen (P)	GS130 Friedrich Wilhelm Ostwald (C)
GS111 Georg Simon Ohm (P)	GS131 Svante August Arrhenius (C)
GS112 Johann Wolfgang Dobereiner (C)	GS132 Prof. S. R. Kashyap (B)
GS113 Thomas Hunt Morgan (B)	GS133 Frederick Sanger (C)
GS114 Christian Doppler (P & M)	GS134 Kary Banks Mullis (C)
GS115 Girolamo Cardano (P & M)	GS135 Michael Smith (C)
GS116 Robert Hanbury Brown (P)	GS136 G. N. Ramachandran (P)
GS117 Yellapragada Subbarow (B & C)	GS137 Alfonso Corti (B)
GS118 Prof. Yash Pal (P)	GS138 Ernst Mayr (B)
GS119 Josef Stefan (P & M)	GS139 Paul Ehrlich (B)
GS120 Melvin Calvin (C)	GS140 Thomas Young (P)

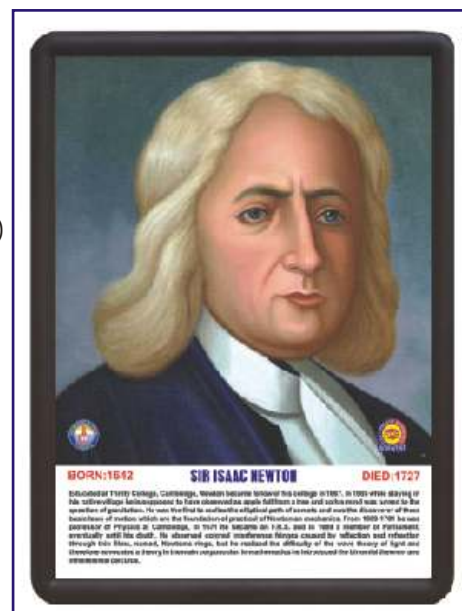


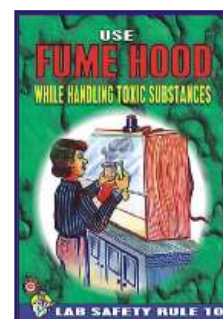
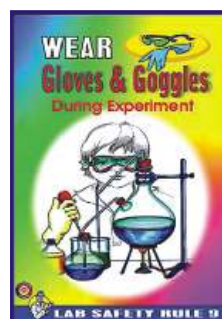
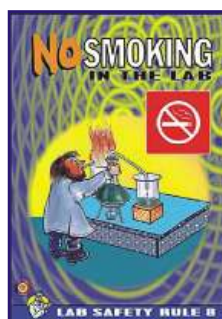
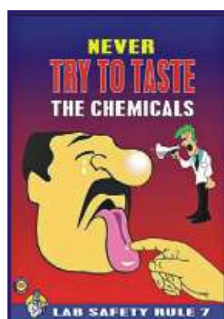
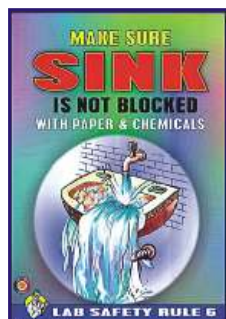
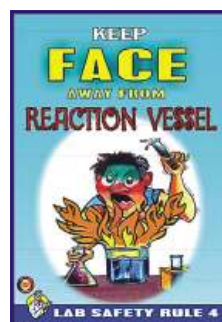
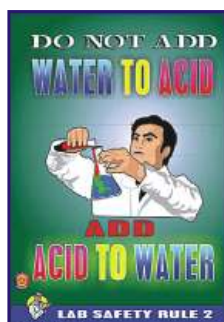
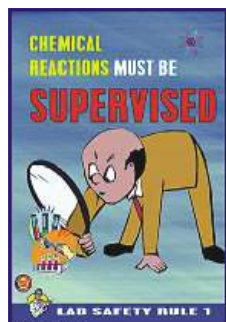
Photo size 45 × 60 cm

(A) Astronomer, (B) Biologist, (C) Chemist, (M) Mathematician, (P) Physicist

LAB SAFETY PHOTOS

Size 31 × 43 cm Approx (LSP01P - LSP10P) Each Rs. 709.00 (A)

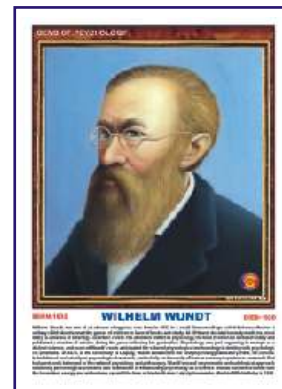
LSP01P Chemical reactions must be supervised	LSP06P Make sure sink is not blocked with paper & chemicals
LSP02P Do not add water to acid	LSP07P Never try to taste the chemicals
LSP03P Keep first aid box handy	LSP08P No smoking in the lab
LSP04P Keep face away from reaction vessel	LSP09P Wear gloves & goggles during experiment
LSP05P Learn to operate fire extinguisher	LSP10P Use fume hood while handling toxic substances



(A) - GST@18% is included in the price.

GEMS OF PSYCHOLOGY

Size 31 × 43 cm Approx (GP01P - GP75P) Each Rs. 709.00 (A)
Size 45 × 60 cm Approx (GP01PS - GP75PS) Each Rs. 2119.00 (A)

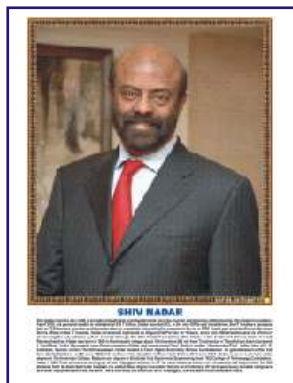


GP01 Abraham H. Maslow
GP02 Albert Bandura
GP03 Alfred Adler
GP04 Alfred Binet
GP05 Aristotle
GP06 B. F. Skinner
GP07 C. L. Hull
GP08 Carl G. Jung
GP09 Carl R. Rogers
GP10 Charles Bell
GP11 Charles Darwin
GP12 Charles Sherrington
GP13 D.O. Hebb
GP14 David Hume
GP15 David Wechsler
GP16 Dr. Cyril Burt
GP17 E. B. Titchner
GP18 E. C. Toleman
GP19 E. H. Weber
GP20 Edward L. Thorndike
GP21 Edwin Guthrie
GP22 Emil Kraepelin
GP23 Erich Fromm
GP24 Erik Erikson
GP25 Ernest Jones

GP26 F. A. P. Aveling
GP27 F. J. Gall
GP28 Francis Galton
GP29 Frederick Perls
GP30 G. S. Hall
GP31 George Kelly
GP32 Gordon Allport
GP33 Gottfried W. Leibnitz
GP34 Gustav T. Fechner
GP35 Hans J. Eysenck
GP36 Harlow
GP37 Heinz Kohut
GP38 Henry Murray
GP39 Herbert Spencer
GP40 Herman Rorschach
GP41 Herman V. Helmholtz
GP42 Hermann Ebbinghaus
GP43 Herry S. Sullivan
GP44 Immanuel Kant
GP45 Ivan P. Pavlov
GP46 J. M. Baldwin
GP47 J. M. Cattell
GP48 J. W. Cannon
GP49 Jean Piaget
GP50 Johann F. Herbart

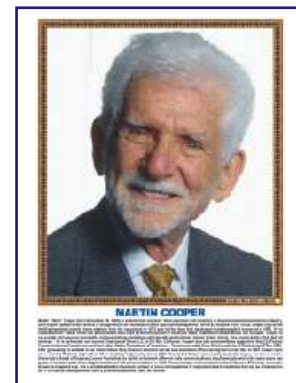
GP51 Johannes P. Muller
GP52 John B. Watson
GP53 John Dewey
GP54 John Locke
GP55 Joseph Wolpe
GP56 Julian Rotter
GP57 K. S. Lashley
GP58 Karen Horney
GP59 Kurt Goldstein
GP60 Kurt Koffka
GP61 Kurt Lewin
GP62 Max Wertheimer
GP63 Melanie Klein
GP64 Neil E. Miller
GP65 Raymond B. Cattell
GP66 Rene Descartes
GP67 Rollo Reese May
GP68 Sigmund Freud
GP69 Thomas Hobbes
GP70 Walter Mischel
GP71 Wilhelm Wundt
GP72 William James
GP73 William Mc-Dougall
GP74 William Sheldon
GP75 Wolfgang Kohler

FAMOUS PERSONALITIES IN COMPUTER SCIENCE



Size 31 × 43 cm Approx (FCS01P - FCS12P) Each Rs. 709.00 (A)
Size 45 × 60 cm Approx (FCS01PS - FCS12PS) Each Rs. 2119.00 (A)

FCS01 Alan Turing	FCS07 Martin Cooper
FCS02 Charles Babbage	FCS08 Satya N Nadella
FCS03 Dr. Vijay P Bhatkar	FCS09 Shiv Nadar
FCS04 George Boole	FCS10 Steve Jobs
FCS05 Lady Lovelace	FCS11 Sundar Pichai
FCS06 Mark Zuckerberg	FCS12 Tim Berners Lee



HEALTH, HYGIENE & SANITATION

On a persistent demand from various Educational Institutions, NGO's, Rural Development Offices, Nursing Institutions we have recently published naturally coloured, useful and authentic charts incorporating all the modern researches and innovations on the subject. The charts are divided into two main topics as below :

HEALTH CARE SERIES

containing 10 Charts English & Hindi combined

Printed in multicolour on Maplitho Paper duly Laminated
size 50x70 cm. Price Each Rs. 159.00 (B)

Printed in multicolour on PVC free, non-tearable Rexine
size 80x115 cm. (RM) Price Each Rs. 1049.00 (B)

HC01	* Health Rules	HC07	* Clean Water
HC02	* Causes of Diseases	HC08	* Constituents of Food
HC03	* Prevention of Diseases	HC09	* Malnutrition
HC04	* Effects of Alcohol	HC10	Immunization
HC05	* Tobacco & Habit Forming Drugs		
HC06	* Clean Body		

* Also Available In

English - Kannada

English - Tamil

English - Malayalam

English - Telugu

Printed in multicolour on Maplitho Paper duly Laminated

PREVENT THE DISEASES

containing 24 Charts English & Hindi combined

Each chart depicts the Causes, Symptoms, Treatments, care to be taken.

Printed in multicolour on Maplitho Paper duly Laminated
size 50x70 cm. Price Each Rs. 159.00 (B)

Printed in multicolour on PVC free, non-tearable Rexine
size 80x115 cm. (RM) Price Each Rs. 1049.00 (B)

PD01	* Cholera	PD10	* Typhoid	PD19	Thyroid
PD02	* Malaria	PD11	Viral Diseases	PD20	Blood Pressure
PD03	* AIDS	PD12	Chicken Pox	PD21	Dengue
PD04	Plague	PD13	* Dysentery	PD22	Measles
PD05	Tuberculosis	PD14	Hepatitis	PD23	Food Poisoning
PD06	Leprosy	PD15	Heart Attack	PD24	Poliomyelitis (Polio)
PD07	Influenza	PD16	Diabetes		
PD08	Jaundice	PD17	Asthma		
PD09	Cancer	PD18	Arthritis		

* Also Available In

English - Kannada

English - Malayalam

English - Tamil

English - Telugu

Printed in multicolour on Maplitho Paper duly Laminated



size 50x70 cm. Price Each Rs. 179.00 (B)



size 50x70 cm. Price Each Rs. 179.00 (B)

Illustrations are selective. For orders refer the list above.

DETAILED HUMAN PHYSIOLOGY CHARTS

Printed in original colours. Everything requisite for thorough understanding of Human Physiology in its broad out line included. Each size 70 × 100 cm.

Laminated

The Skeleton*#	HPM01
Human Muscles*#	HPM02
Blood Circulation*#	HPM03
Nervous System*#	HPM04
Digestive System*#	HPM05
Eye*#	HPM06
Ear*#	HPM07
Kidney, Skin & Excretory Organs*#	HPM08
The Respiratory System*#	HPM09
Human Heart*#	HPM10

All above price Rs. 249.00 (B) each

Endocrine System	HPM11
Reproductive (Male)*	HPM12
Reproductive (Female)*	HPM13
Human Embryology	HPM14
Lymphatic System	HPM15
English-Hindi combined	Each Rs. 259.00 (B)
English Only (Add E to the code)	Each Rs. 259.00 (B)
HPM16E Human Brain Eng Only	Rs. 269.00 (B)
HPM17E Human Teeth Eng Only	Rs. 269.00 (B)

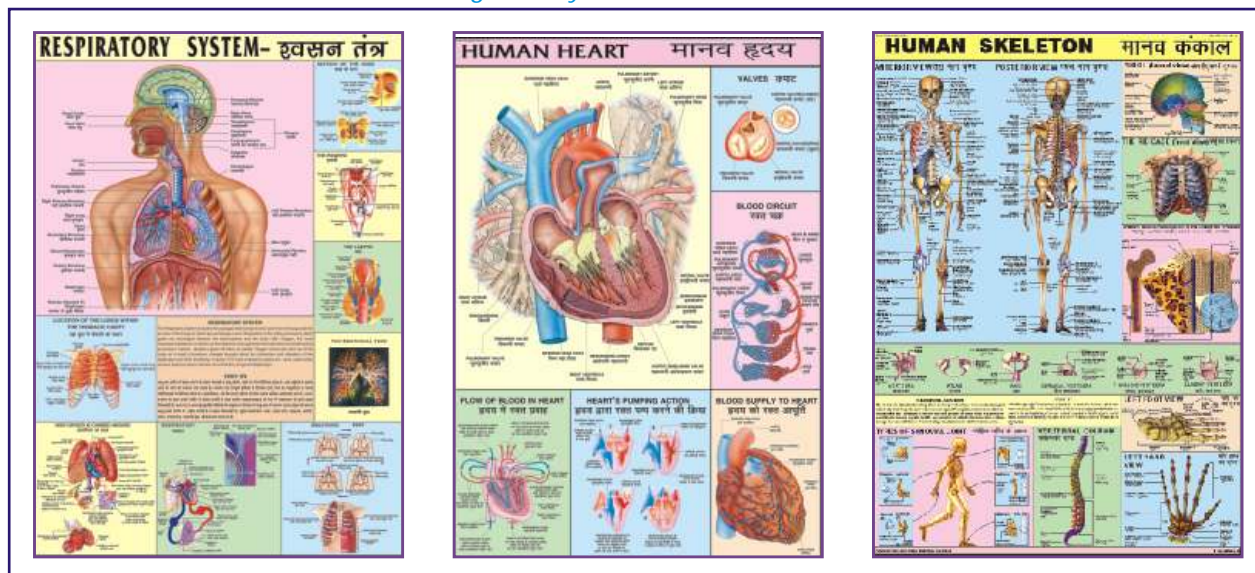
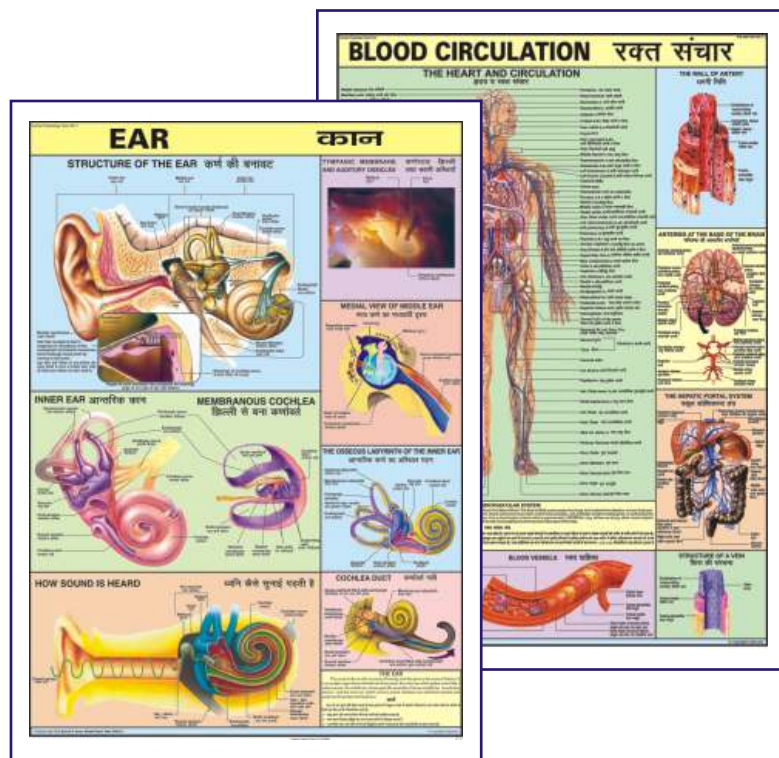
Available in following languages also

*English-Kannada(KN) *English-Malayalam(ML)

English-Tamil(TM) #English-Telugu(TG)

Price Rs. 269.00 (B) each

For English only. Add E to the above code



ELEMENTARY HUMAN PHYSIOLOGY

HPS01 to HPS11 Elementary Human Physiology

Size 50 × 70 cms

Laminated

Each chart Rs. 159.00 (B)

Available in English-Hindi only

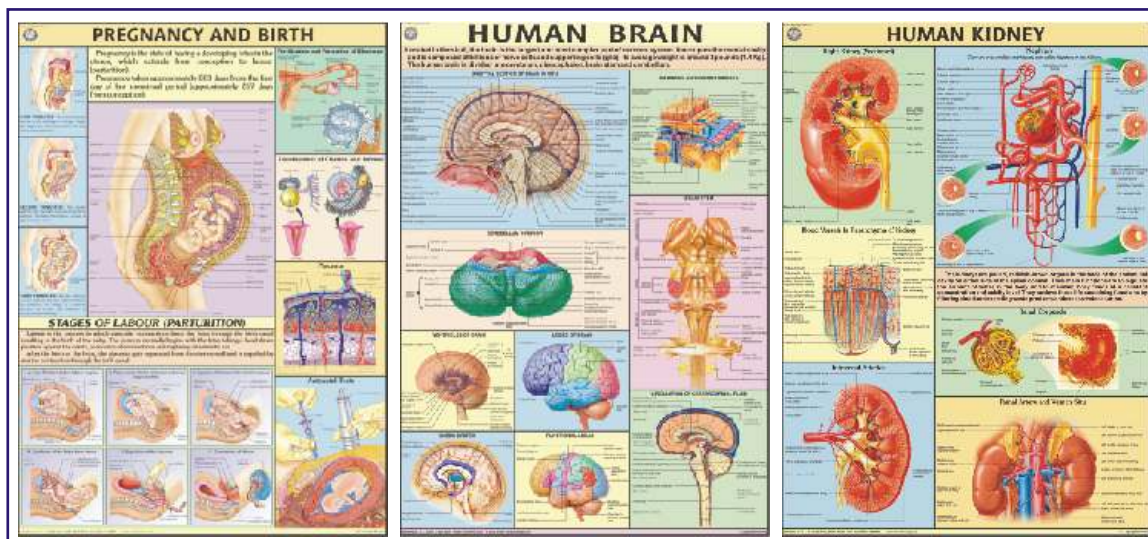
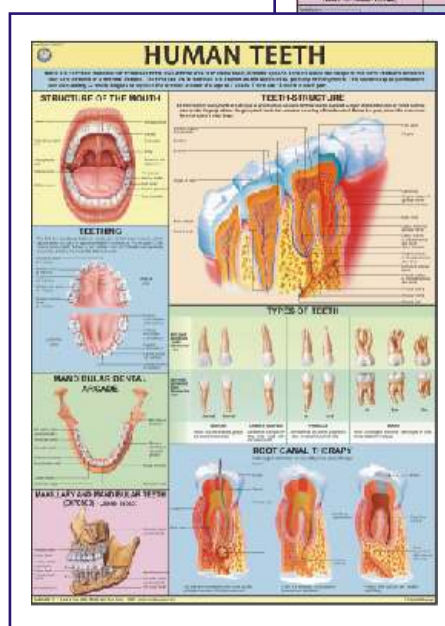
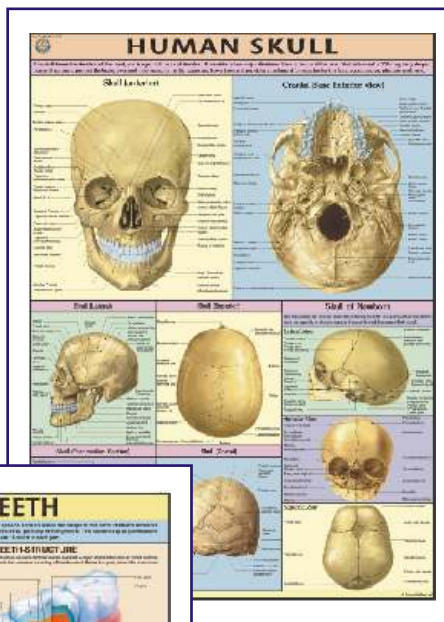
For details please see the first 11 charts given above.

DETAILED HUMAN PHYSIOLOGY CHARTS

Printed on Synthetic in original colours . Everything requisite for thorough understanding of Human Physiology in its broad out line included. Each size 70 × 100 cms. Available in English only. Price Each chart Rs. 349.00 (B)

The Skeleton	HP01S
Muscles.....	HP02S
Blood Circulation	HP03S
Nervous System.....	HP04S
Digestive System.....	HP05S
Eye	HP06S
Ear	HP07S
Kidney, Skin & Excretory Organs.....	HP08S
The Respiratory System	HP09S
Human Heart	HP10S
Endocrine System	HP11S
Reproductive (Male).....	HP12S
Reproductive (Female)	HP13S
Human Embryology	HP14S
Lymphatic System.....	HP15S
Human Brain.....	HP16S
Human Teeth	HP17S
Pregnancy & Birth.....	HP18S
Human Kidney	HP19S
Urinary Tract	HP20S
Human Skull.....	HP21S
Ear, Nose, Throat	HP22S
Liver, Gall bladder & Pancreas	HP23S
Human Lungs.....	HP24S
Joints of the Body	HP25S
Immune System.....	HP26S
Human Skin	HP27S
Movable Joints (Synovial)	HP28S
Human Spinal Cord.....	HP29S
Menstrual Cycle	HP30S
Contraception (Birth Control)	HP31S
Vertebral Column	HP32S

Please ask for separate
list of Human
Physiology charts
printed on Non-
Tearable, Non-
Reflective, eco-friendly,
odour-free, non Toxic,
PVC free Rexin in
size 80x115 cm



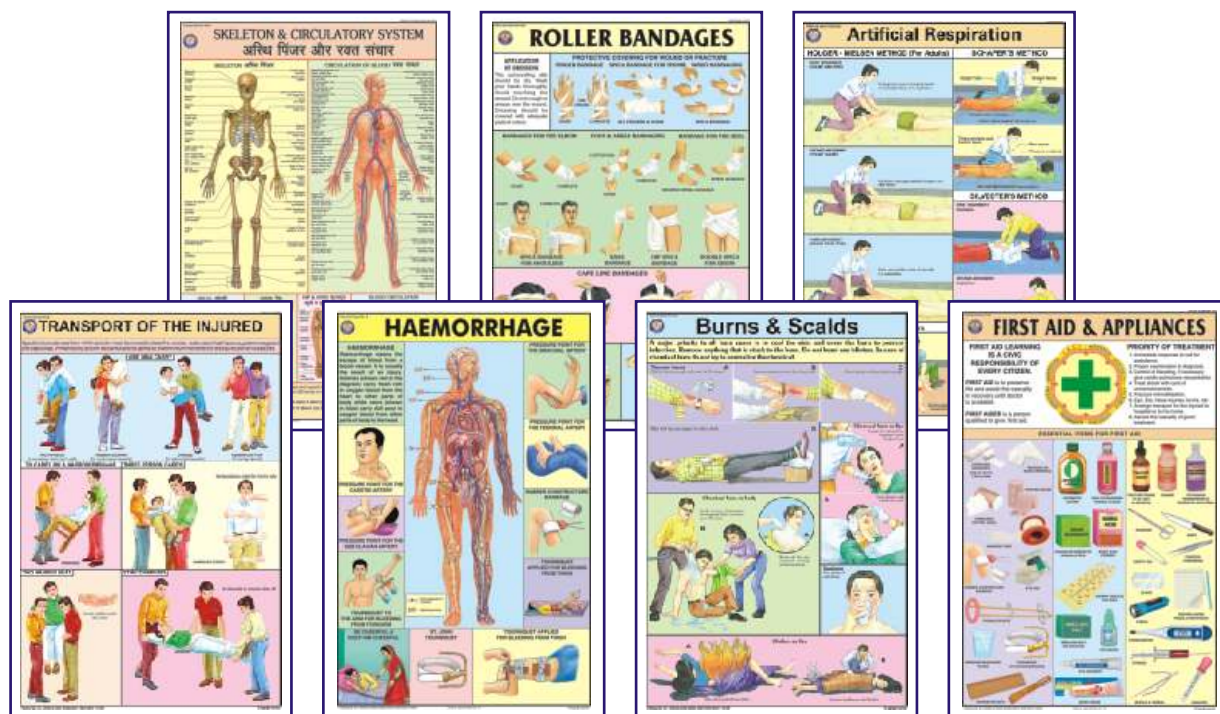
FIRST AID CHARTS

Printed in multicolour on Maplitho Paper duly Laminated
Printed in multicolour on PVC free, non-tearable Rexine

size 50X70 cm. Price Each Rs. 159.00 (B)
size 80x115 cm. (RM) Price Each Rs. 1049.00 (B)

English and Hindi combined

- FA01 **Skeleton & Circulatory System** : Gives the basic knowledge of human body.
FA02 **Triangular Bandages** : Slings, knots and bandages for various parts of body.
FA03 **Roller Bandages** : A protective covering for wound or fracture, methods of bandaging.
FA04 **Fractures** : Simple & compound fractures, treatment of fracture in parts of body.
FA05 **Artificial Respiration** : Showing Schafer's method, Silvestor's method & Holger Nielsen's method of artificial respiration. Outline of Respiratory system and what is suffocation.
FA06 **Transport of the injured** : How to carry an injured person so that minimum movement of the injured portion is assured.
FA07 **Unconsciousness** : Sun Stroke, fainting, epileptic fit, Infantile convulsions, drowning.
FA08 **Haemorrhage** : Location of main arteries in the body and pressure points where when pressed, bleeding can be controlled.
FA09 **Electric Shock Treatment** : How to remove live wires, treatment & whom to contact.
FA10 **Emergency Resuscitation** : Mouth to mouth and Mouth to nose method. How to give external cardiac chest compression.
FA11 **Removal of foreign bodies from eye, ear, nose** : Various precautionary methods to remove the foreign bodies and to ensure safety of organs.
FA12 **Burns & Scalds** : Type of burns, treatment of chemical burns, clothing on fire.
FA13 **Snakes & Their Bites** : Type of snakes, Identification of snakes on the basis of appearance, treatment of snake bite.
FA14 **Poisons and their Antidotes** : Types of poisons, their symptoms & their treatment.
FA15 **First Aid & Appliances** : What is First Aid, Qualities of a First Aider and essential appliances to give first aid.



Some Special Charts

CD05 Life saving first aid instruction
STG21 Fire & Fire Extinguishers

size 70x100 cm, Eng & Hindi Combined, Lam.
size 58 x 90 cm, Eng Only, Lam.

Rs. 269.00 (B)
Rs. 269.00 (B)

COLOURED CHARTS ON YOGA

Printed in multicolour on Maplitho Paper duly Laminated

size 50X70 cm. Price Each Rs. 159.00 (B)

Printed in multicolour on PVC free, non-tearable Rexine

size 80x115 cm. (RM) Price Each Rs. 1049.00 (B)

Hindi & English combined

A faithful study and following the instructions as laid down in these charts, a vast treasure of super powers can be explored and developed within ourselves. For all round Physical, Mental, Emotional, Intellectual & Spiritual development of mind and body.

YO01 Shuddhi Kriyas-Shat Karmas : Kunjal-Vaman Dhauti, Kapal Bhati, Ghrit Neti, Sutra Neti, Jal Neti, Vastra Neti, Dand Dhauti, Nauli Karma, Tratak, Basti etc.

YO02 Shankh Prakshalan : Kagasan, Tadasan, Triyak Tadasan, Triyak Bhujangasan, Kati Chakrasan, Udarakarashanasan, Shavasan.

YO03 Surya Namaskar : A series of twelve steps, a complete exercise of all the parts of body. It makes the body strong, beautiful & active.

YO04 Yog Mudras, Padmasan & Matsyasan : These remove Spinal & Cervical pain, Asthma, Diabetes, Mental weakness, Gastric troubles, Knee pain, Eye Defects.

YO05 Paschimottanasan & Ardh Matsyendrasan : Spine becomes flexible and Elastic, the Abdominal organs- Digestive system, Nervous system are toned up.

YO06 Vajrasan, Ustrasan & Supt Vajrasan : These remove cervical and slipdisc defects diseases of chest, lungs, heart, abdomen, kidney etc. , excess fatness of Abdomen and back

YO07 Bhujangasan, Shalabhasan, Dhanurasan & Mayurasan : Abdominal Organs are toned up. Spine is strengthened. Remove Gastic Intestinal disorders etc. Mental Powers are developed.

YO08 Pawan Mukhtasan & Chakrasan : Keep Spine Young & Flexible. Improve Eye sight, Hearing, Smell Taste & Circulation of Blood to the brain.

YO09 Sarvangasan & Halasan : Reduce fat, make arms, legs, Blood circulation, Digestive system, Liver strong and maintains youthful look etc.

YO10 Bandhas & Pranayams : Mool Bandh, Jalandhar Bandh, Uddiyan Bandh, Mahabandh. Pranayam Mudra, Lom-vilom Pranayam, Nadishodhan Pranayam, Agnisar Kriya.

YO11 Spine & Related Organs : Composition of spine, Positions of Psychic centres and Endocrine Glands are shown.

YO12 Healthy Eye : Eye washing, tratak on rising sun, Eye exercises, Palming.

All the above Charts are available in English only also. Add E to the above code



MAP STANDS

MAP STORAGE STAND

DS101 As illustrated for keeping 24 maps made of iron painted.

• Price Rs. 4509.00 (A)

DS102 For keeping 36 maps made of Iron painted.

• Price Rs. 5619.00 (A)

MAP DISPLAY STAND

DS103 The map hangs on the stand nearest to the students; it is easy for the teacher also to emphasise on a point. All folding sturdily built of iron pipes. Height Adjustable. Very convenient to carry from one class to another. Painted.

• Price Rs. 3499.00 (A)



Charts are laminated and fitted with plastic rollers.

BONES & SKELETON MODELS



ZX-S101



ZX-S101 Human Skeleton Male Life Size Articulated

- Price Rs. 34059.00 (A)
- Life size • Made of PVC
- Bonnet can be removed, Mandible is movable, Teeth are separately installed & all skull foramina, fissures, processes are well depicted.
- Cervical artery, nerves, prolapsed (herniated) disk & hyoid bone shown.
- Coccyx separately mounted.
- Sacral canal clearly depicted.
- Upper limbs & lower limbs can be removed easily.
- Washable & Unbreakable.
- Mounted on stand with rollers.
- Key card / Manual provided.



ZX-S130



ZX-S130 Human Skeleton Disarticulated with Intervertebral Discs

- Price Rs. 18409.00 (A)
- Life size • Made of PVC
- Complete set of 201 pcs.
- Ideal for study of individual bones.
- Skull bonnet can be removed, Mandible is movable & all skull foramina, fissures, processes are well depicted.
- Teeth are separately installed, same as real one, in ceramic white color.
- Right hand and foot are articulated.
- Left hand and foot are disarticulated.
- All intervertebral discs provided.
- Hyoid bone, separate coccyx provided.
- Sacral canal clearly depicted.
- Instructional chart included.
- Key card / Manual provided.



ZX-S102PN



ZX-S102PN Human Skeleton Model 85 cm Numbered

- Price Rs. 8839.00 (A)
- Made of PVC
- Demonstration of anatomically accurate natural movements.
- The points of origin (Red) and attachment (Blue) of the most important muscles from head to foot are marked in colour on the right side.
- Mounted on stand.
- 49 features marked.
- Key card / Manual provided.

ZX-1236P Skeleton 85 cm with Nerves, Blood Vessels & Heart

- Price Rs. 10869.00 (A)

- Made of PVC
- Bones are individually casted (except for the hands and feet) and wired together to show the natural movement.
- The left side has representations of the nerves, veins, arteries and ligaments of the human body.
- Heart inside the thoracic cavity with aorta and vena cava to understand the vascular system
- Mounted on stand.
- Key card / Manual provided.



ZX-1236P



ZX-S103



ZX-S103 Desktop Skeleton 45 cm

- Price Rs. 2209.00 (A)
- 45 cm • Made of PVC
- Features three part skull, bonnet can be removed, Mandible is movable & skull foramina, fissures, processes are well depicted. Vertebral column is fixed.
- Flexible arms and legs allow for realistic movement.
- Mounted on stand
- Key card / Manual provided.



ZX-1237



ZX-1237 Skeleton 85 cm, economical

- Price Rs. 6629.00 (A)
- Made of PVC
- The skeleton's arms and legs are both movable at all the major joint groups. Mandible shows natural movement.
- Toes, fingers, spine, neck and pelvis do not have movement.
- Both legs, skull cap and the jaw are removable.
- The model is held in place by a pelvically mounted rod to a base
- Mounted on stand.
- Key card / Manual provided.

ZX-1227

NEW



ZX-1227 Tiny Skeleton, 21cm

• Price Rs. 929.00 (A)

- Size : 21 cm height
- Made of PVC
- Well built and informative.
- Features three part skull, bonnet can be removed & all skull foramens, fissures, processes are well depicted. Vertebral column is fixed.
- Flexible arms and legs allow for realistic movement.
- Tiny version of human skeleton model.
- Erect on stand
- Model is accurately made from actual specimen references, photographs and encyclopedia reference under expert guidance.
- Model is great teaching tool for anatomy lessons.
- Key card / Manual provided.

ZX-1224P

NEW



ZX-1224P

Fetus Skeleton

- Price Rs. 9209.00 (A)
- Life size
- Made of PVC
- Human articulated fetal skeleton model.
- 32 weeks fetal skeleton structure shown.
- Skull & legs are detachable.
- Lower jaw is spring loaded enabling it to open and close.
- Model is rigid with stand & base.
- Key card / Manual provided.

ZX-S109

ZX-S109

Shoulder Joint Model Flexible

• Price Rs. 3039.00 (A)

- Life size
- Made of PVC
- Show shoulder joint abduction, adduction, forward tilt, backward tilt and inward/outward rotation.
- It is constructed with flexible plastic ligaments.
- Mounted on a plastic base.
- Key card / Manual provided.



ZX-S110

NEW



ZX-S110

Hip Joint Model Flexible

• Price Rs. 3039.00 (A)

- Life size
- Made of PVC
- Accurate representation of the hip joint and its ligaments.
- It is constructed with flexible plastic ligaments.
- Mounted on a plastic base.
- Key card / Manual provided.

ZX-S112

NEW



ZX-S112

Elbow Joint Model Flexible

• Price Rs. 3039.00 (A)

- Life size
- Made of PVC
- It consists of lower part of humerus bone and upper part of radius and ulna bones.
- It is constructed with flexible plastic ligaments.
- Mounted on a plastic base.
- Key card / Manual provided.

ZX-S111

NEW



ZX-S111

Knee Joint Model Flexible

• Price Rs. 3039.00 (A)

- Life size
- Made of PVC
- Model represents a functional model of knee joint with lateral ligaments, meniscus and patellar ligament.
- It is constructed with flexible plastic ligaments.
- Mounted on a plastic base.
- Key card / Manual provided.

ZX-S113A

NEW



ZX-S113A

Foot Joint Model Flexible

• Price Rs. 3039.00 (A)

- Life size
- Made of PVC
- Accurate representation of the foot joint and its ligaments
- It is constructed with flexible plastic ligaments
- Mounted on a plastic base.
- Key card / Manual provided.

ZX-S114A

NEW



ZX-S114A

Hand Joint Model Flexible

• Price Rs. 3039.00 (A)

- Life size
- Made of PVC
- All joints are movable according to real human flexibility, with radius and ulna.
- It is constructed with flexible plastic ligaments
- Mounted on a plastic base.
- Key card / Manual provided.

ANATOMICAL MODELS



ZX-1212P

ZX-1212P Muscular Shoulder Joint Model

- Price Rs. 6079.00 (A)
- Life size • Made of PVC • Mounted on a plastic base
- Model is a realistic replica of a right shoulder joint muscles and ligaments.
- Model Features a semi-articulating right rotator cuff with an encapsulated humerus that can be removed from the capsular ligament. This allows demonstration of the rotator cuff's role in both fixing the humerus in the glenoid cavity and depressing it during elevation.
- Model includes eight ligaments and tendons, four bones (acromion, clavicle, humerus and scapula), and five muscles (infraspinatus, teres minor, teres major, subscapularis and supraspinatus) of the shoulder.
- Key card / Manual provided.



ZX-1226A Knee Joint Model Deluxe with Muscles & Ligaments



ZX-1226A

- Price Rs. 6629.00 (A)
- Life size (29 x 10 x 7.5 cm) • Made of PVC
- Model represents a slightly flexible right knee joint with associated muscles, ligaments and meniscus.
- It shows fibular collateral, tibial collateral, anterior and posterior cruciate, and patellar ligament with patella.
- The extended femur and patellar ligament are connected to top section of the quadricep on this anatomical model.
- The model is constructed with somewhat rigid plastic ligaments.
- Mounted on display stand.
- Model is of superior quality with realistic texture and features and is very informative.
- Key card / Manual provided.



ZX-1225

ZX-1225 Muscular Hip Joint Model

- Price Rs. 6819.00 (A)
- Life size • Made of PVC
- It is a realistic replica of hip joint muscles and ligaments.
- Mounted on a plastic base.
- Key card / Manual provided.



ZX-1510P

ZX-1510P Knee Arthritis Model

- Price Rs. 5709.00 (A)
- Size reduced to 3/4
- Made of PVC
- Set of 4 knee models includes a normal knee joint and 3 models illustrating progressive degenerative knee joint disease from early to moderate and finally to advanced stage.
- Models shows osteoarthritic erosion to joint articular cartilage and formed osteophytes (bone spurs) at the articular surfaces.
- Mounted on display stand.
- Key card / Manual provided.



ZX-1203E

ZX-1203E Foot Model

- Price Rs. 4789.00 (A)
- Life size • Made of HSP resin
- Model shows significant structures of the foot such as muscles, bones and ligaments
- 31 features marked.
- Key card / Manual provided.



ZX-1203S

ZX-1203S Foot Anatomy Model

- Price Rs. 5249.00 (A)
- Life size • Made of HSP resin
- Human foot model showing muscles, ligaments, tendons and bones of the foot.
- 30 features marked.
- Key card / Manual provided.



ZX-1601

ZX-1601 Bone Microstructure

- Price Rs. 7369.00 (A)
- 30x20x16 cm • Made of HSP resin
- 3-D section of a lamellar bone.
- It helps to understand the typical elements of a lamellar bone along with the Volkmann & Haversian system, spongy & compact parts, endosteum, cortical substance & osteocytes.
- Model shown various planes in cross and longitudinal section.
- 19 features marked.
- Key card / Manual provided.



ZX-S126A

NEW

ZX-S126A Vertebral Column Flexible Model Life Size

- Price Rs. 8289.00 (A)
- Life size
- Made of PVC
- Fully flexible
- It consists of the occipital plate, cervical, thoracic and lumbar vertebrae, sacrum, coccyx and complete pelvis with symphysis and removable femur heads.
- Features include vertebral arteries, spinal nerve branches & a prolapsed L3-L4 intervertebral disc.
- Mounted on stand.
- Key card / Manual provided.



ZX-1223P

NEW

ZX-1223P Didactic Vertebral Column, Half Size

- Price Rs. 4419.00 (A)
- Half size
- Made of PVC
- Fully flexible
- It is differentiated by colours to show 7 cervical vertebrae, 12 thoracic vertebrae, 5 lumbar vertebrae, sacrum and coccyx.
- Model also shows full pelvis and movable femur heads.
- Mounted on stand
- Key card / Manual provided.



ZX-1223

NEW

ZX-1223 Spinal Column Model Half Size

- Price Rs. 3689.00 (A)
- Half size
- Made of PVC
- Fully flexible
- Consists of the cervical, thoracic and lumbar vertebrae, sacrum, coccyx, complete pelvis and femur heads.
- Features include representations of the spinal nerve branches and a prolapsed L3-L4 intervertebral disc.
- Mounted on stand
- Key card / Manual provided.

ZX-S120 Thoracic Vertebrae model Life Size



ZX-S120

NEW

- Price Rs. 6449.00 (A)
- Life size
- Made of PVC
- This model consists of the 12 thoracic vertebrae with intervertebral discs, thoracic nerves and spinal cord.
- In this model, true thoracic skeletal shape is restored, the shape is vivid, and the texture is clear and delicate. Anatomical details such as various bulges, bone sutures, and sulcus vascular indentations are expressed.
- Mounted on stand.
- The model is flexible just like original vertebrae.
- Key card / Manual provided.



ZX-S105P

NEW

ZX-S105P Vertebral Column Flexible, Didactic Painted

- Price Rs. 9209.00 (A)
- Life size
- Made of PVC
- Fully flexible
- The various regions of the vertebral column are color coded for ease of identification.
- It consists of the occipital plate, cervical, thoracic and lumbar vertebrae, sacrum, coccyx, complete pelvis.
- Features include representations of the vertebral arteries, spinal nerve branches and a prolapsed L3-L4 intervertebral disc.
- Mounted on stand.
- Key card / Manual provided.



ZX-1505

NEW

ZX-1505 Lumbar Vertebrae Degeneration Model

- Price Rs. 5899.00 (A)
- 35x23x19 cm
- Made of PVC
- Lumbar spine lesion demonstration model showing one pair of normal lumbar vertebrae, one vertebrae set with bulging herniated disc, one vertebrae set with bone/disc degeneration and one vertebrae set showing advanced osteoporosis with bone compression and bone spurs.
- Key card / Manual provided.



ZX-S119

NEW

ZX-S119 Lumbar Vertebrae with Sacrum Bone

- Price Rs. 5159.00 (A)
- Life size
- Made of PVC
- Mounted on a stand
- The shape is vivid, and the texture is clear and delicate. Anatomical details such as various bulges, bone sutures and sulcus vascular indentations are expressed.
- Key card / Manual provided.

ANATOMICAL MODELS



ZX-S104 Skull Model 3 Part PVC

- Price Rs. 4049.00 (A)
- Life size • Made of PVC
- Dissectable in 3 parts
- Bonnet can be removed, Mandible is movable & all skull foramina, fissures, processes are well depicted
- Teeth are separately installed, same as real one, in ceramic white color.
- Key card / Manual provided.



XC-104

Life Size Skull

- Price Rs. 4789.00 (A)
- This economical life-size adult plastic skull features a moveable jaw, cut calvarium, suture lines and 3 removable lower teeth-incisor, cuspid and molar.
- Dissectible into 3 parts.

ZX-1200 Skull with Removable Lower teeth



- Price Rs. 7369.00 (A)
- Life size • Made of PVC • Dissectable into 4 parts.
- This high quality classic skull with 16 teeth for extraction is medically detailed in structure. The teeth of the lower jaw can be individually extracted and replaced, and have fully formed roots for detailed examination. The model has a bone flap on its right mandible for viewing the dental roots, spongiosa, nerve canal, and an impacted wisdom tooth. The calvaria is removable to show the internal structure of the skull. The mandible is articulated and removable. All of the joints, sutures, fissures, foramen, and styloid processes are highly accurate.
- It is a perfect tool for anatomical and dental study.
- Key card / Manual provided.

ZX-S135PN Didactic Skull with Muscle Insertion and Cervical Spine



- Price Rs. 8839.00 (A)

- Life size
- Made of PVC
- The right side of skull is painted to show different bones. The left side shows the skull muscles origin and insertion points.
- Bony landmarks, fissures, foramina, processes and sutures are shown.
- Cervical spine, cervical nerves, vertebral arteries and basilar artery shown.
- Mounted on a plastic base stand.
- Key card / Manual provided.



ZX-1202PN Skull Model Life size Painted-Numbered PVC

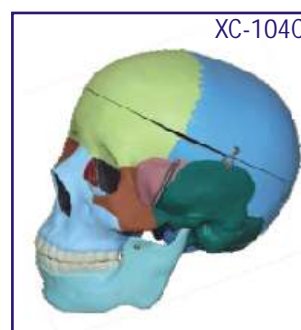
- Price Rs. 5529.00 (A)
- Life size • Made of PVC • Dissectable in 3 parts
- Muscle insertions and origins painted in blue and red respectively.
- Bonnet can be removed, Mandible is movable & all skull foramina, fissures, processes are well depicted.
- Teeth are separately installed, same as real one, in ceramic white color.
- 48 features marked. • Key card / Manual provided.

ZX-1208P Didactic Human Skull 22 Parts



- Price Rs. 20249.00 (A)
- Life size • Made of PVC
- Consists of 22 parts.
- Suture of each bone is equipped with magnets to assemble easily.
- The 22 bones are depicted in 10 different didactic colors to study the correct position and the relationship of all the structures. Each pair of bone plates has the same color.
- Key card / Manual provided.

XC-104C Life Size Coloured Skull



- Price Rs. 6449.00 (A)
- This is advanced model of XC-104 life-size skull, bones painted in different colors for precise study.
- Can be disassembled into 3 parts.

ANATOMICAL MODELS

ZX-1232PN Skull with Well Marked Sutures



- Price Rs. 4979.00 (A)
- Life size • Made of PVC
- Dissectable in 3 parts
- This skull model comes with a removable calvarium (skull cap) to show internal details and removable & an articulating mandible (jaw).
- All suture lines are beautifully painted for easy identification.
- 55 features marked.
- Key card / Manual provided.



XC-104E Skull Model with 8 Parts Brain

- Price Rs. 11419.00 (A)
- This Model is based on XC-104, includes 8 parts brain: frontal & parietal lobe, temporal & occipital lobe, encephalic trunk & cerebellum.

ZX-1209P Didactic Miniature Skull 15 Parts



- Price Rs. 5159.00 (A)
- 12.5x9x13 cm • Made of PVC
- Consists of 15 parts.
- Suture of each bone is equipped with magnets to assemble easily. All the bones are depicted in different colours, making this model a useful tool to study the correct position and the relationship of all the structures.
- Key card / Manual provided.



ZX-1204 Miniature Skull Model PVC

- Price Rs. 1109.00 (A)
- 9.75x7x11 cm • Made of PVC
- Dissectable in 3 parts
- Bonnet can be removed, Mandible is movable. The foramen & fossa are present.
- Key card / Manual provided.



ZX-1201 Human Fetal Skull

- Price Rs. 3039.00 (A)
- Made of HSP resin having long durability.
- Natural size. Movable lower jaw.
- Total 41 parts labeled.
- Beautifully painted in colours.
- Showing incomplete ossification of skull bones, fontanelles, frontal and parietal eminences, various skull bones like occipital, temporal, sphenoid, frontal, mandible and maxilla.



ZX-S123

Male Pelvis Bone Model

- Price Rs. 3689.00 (A)
- Life size • Made of PVC
- Easy to study the structures and features of the hip, sacrum, coccyx & pubic symphysis.
- Separate coccyx.
- Sacral canal clearly depicted.
- Key card / Manual provided.



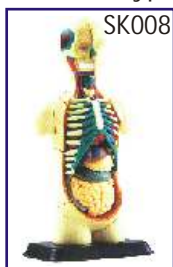
ZX-S124

Female Pelvis Bone Model

- Price Rs. 3689.00 (A)
- Life size • Made of PVC
- Easy to study the structures and features of the hip, sacrum, coccyx & pubic symphysis.
- Sacral canal clearly depicted.
- Key card / Manual provided.

BUILD YOUR ANATOMY MODELS

- New Type of Puzzle • Highly Detailed Finish • Collectible Quality • Dissectable in Small Parts • Display Stand •



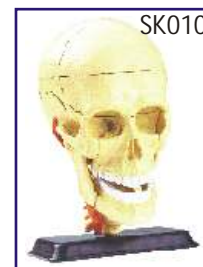
SK008 Human Body Anatomy Model

- Price Rs. 3689.00 (A)
- Size 12.7 cm
- 32 pieces set.



SK009 Heart Anatomy Model

- Price Rs. 3689.00 (A)
- Size 14 cm
- 31 pieces set.



SK010 Cranial Nerve Skull Anatomy Model

- Price Rs 3689.00 (A)
- Size 9 cm
- 39 pieces set.

(A) - GST @18% is included in the price.

ANATOMICAL MODELS

JOINT SECTION MODELS

- Life size
- Made of PVC
- Mounted on a plastic base.
- Keycard / Manual provided.
- Textures of the spongy and compact bone material, directional striations of the muscle, smooth ribbing of nerve bundles and the smooth lumpy fat areas can be felt over in great detail with this relief model.



ZX-1214P

ZX-1214P

Shoulder Joint Section Model

- Price Rs. 5529.00 (A)
- Cross section of a human right shoulder.
- This cross section clearly shows the scapula, clavical, humerus and 1st-5th ribs, lateral cord, axillary artery, articular cartilage, deltoid, bicep, ligaments, fat, arteries, veins and dermis presented in one convenient model.

NEW



ZX-1215P

ZX-1215P

Hip joint Section Model

- Price Rs. 5529.00 (A)
- Cross section of a human right hip.
- This cross section clearly shows the bones, cartilage, muscles, tendons and dermis presented in one convenient model.

NEW



ZX-1216P

ZX-1216P

Knee Joint Section Model

- Price Rs. 5529.00 (A)
- Cross section of sagittal section of human kneejoint.
- This cross section clearly shows the muscles, bones (including Femur, Tibia, and Patella), vasculature, ligaments, tendons and dermis presented in one convenient model.

NEW



ZX-1217P

ZX-1217P

Elbow Joint Section Model

- Price Rs. 5529.00 (A)
- Cross section of a human elbow.
- This cross section clearly shows the humerus, radius, ulna, muscles and dermis presented in one convenient model.

NEW



ZX-1218P

ZX-1218P

Foot Joint Section Model

- Price Rs. 5529.00 (A)
- Cross section of a human right foot/ankle.
- This cross section clearly shows the bones, cartilage, muscles, ligaments, vasculature, nerves and dermis presented in one convenient model.

NEW



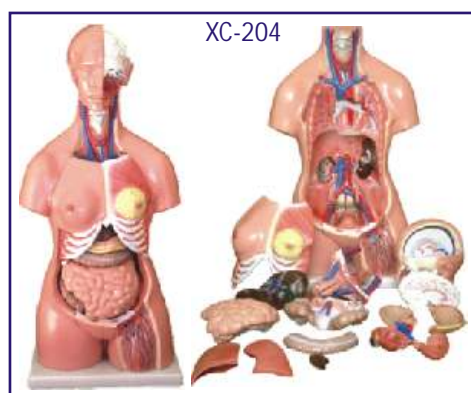
ZX-1219P

Hand Joint Section Model

- Price Rs. 5529.00 (A)
- Cross section of a human right hand/wrist.
- This cross section clearly shows the bones, cartilage, muscles, tendons and dermis presented in one convenient model.

NEW

HUMAN TORSO MODELS



XC-204

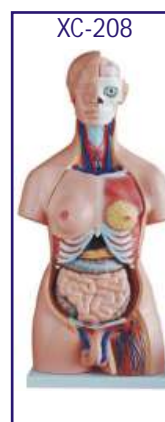
XC-204 Unisex Torso 23 parts 85CM

- Price Rs. 42339.00 (A)
- Size: 33.5" tall (85cm)
- Made of PVC plastic.
- Features an exposed spine with removable vertebra and spinal cord segments.
- Interchangeable male and female genitalia.
- The female organs include a fetus in the womb.

- Mounted on a plastic base.
- Dissectible into 23 parts: torso, female breast plate, head, eyeball, brain, vertebra spinal nerves, lung (2 parts), heart (2 parts), liver, kidney, stomach (2 parts), intestines (4 parts), male genitalia (2 parts), female genitalia with fetus (3 parts).

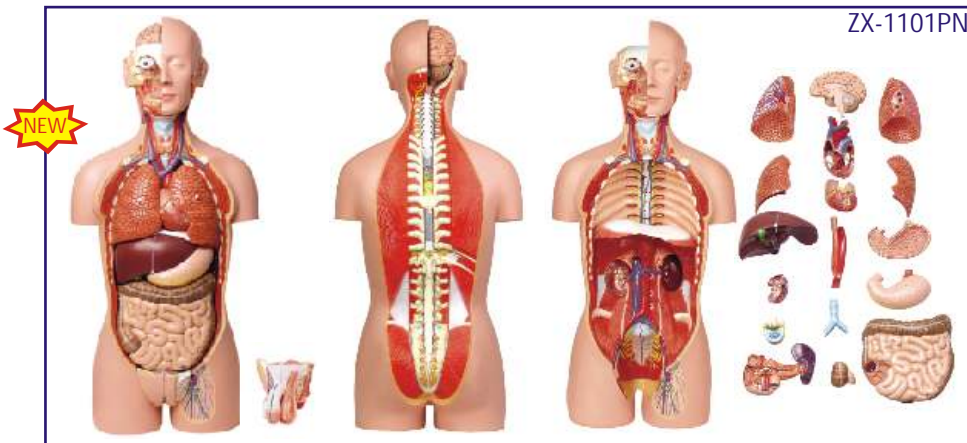
XC-208 85CM Unisex Torso 40 Parts

- Price Rs. 57439.00 (A)



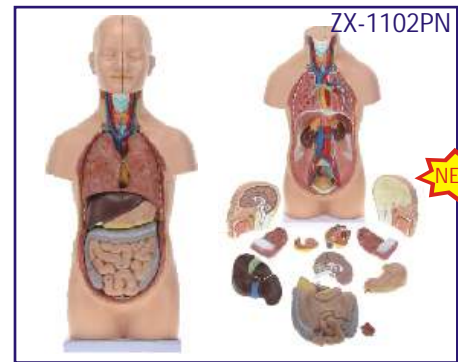
XC-208

- Unisex torso
- 40 parts torso
- Female breast plate, head, eyeball, brain (8 parts), vertebra spinal nerves (4 parts), lung (4 parts), heart (2 parts), trachea, esophagus and descending aorta, diaphragm, liver, kidney, stomach (2 parts), Intestines (4 parts), male genitalia (4 parts), female genitalia with fetus (3 parts).
- Size: 85CM.



ZX-1101PN Human Torso Deluxe 85 cm. 27 Parts 2-in-1

- Price Rs. 91859.00 (A)
- 85 cm • Made of PVC • Dissectable in 27 parts.
- 2-in-1 with removable interchangeable male and female genitalia.
- The mouth cavity and nasal cavity is open.
- The head is open, the cerebrum with cerebellum can be taken out.
- Removable male & female reproductive organ and removable half kidney.
- Lung completely removable. Important structures of thoracic cavity like sympathetic column, azygos vein, hemiazygos vein, thoracic duct are well shown.
- Open neck & back providing full view of the nervous system, brain & whole spinal cord.
- The 12th thoracic vertebra can be taken out for close observation of vertebrae, spinal cord, spinal nerves and 3 layers of maters.
- Key card / Manual provided.



ZX-1102PN Human Mini Torso 50 cm (12 Parts)

- Price Rs. 17489.00 (A)
- 50 cm tall • Made of PVC
- Dissectable in 12 parts.
- The model includes removable lungs, heart, liver, stomach, intestines, and head. Cecum can be easily removed from the intestine for additional internal view.
- The head is bisectable. One half of the brain is also removable. The heart can be bisected as well.
- Hooks & hidden magnets are used to keep the torso together.
- Mounted on a base.
- 73 features marked.
- Key card / Manual provided.

ZX-1103P Human Torso Small



- Price Rs. 5439.00 (A)
- 28 cm tall • Sexless
- Made of PVC
- Dissectable in 15 parts- trunk, brain (2), heart, esophagus and aorta, lung (4), skull cover, stomach, diaphragm, liver, pancreas & spleen, and intestines.
- Details organs are depicted clearly.

- Mounted on a base.
- Key card / Manual provided.



ZX-1100E Human Torso Small (23 parts)

- Price Rs. 6909.00 (A)
- 46 x 24 x 12.5 cm.
- Interchangeable male & female genitalia.
- Mounted on a base.

- 74 features marked.
- Key card / Manual provided.

XC-205 Unisex Torso 23 parts 45 cm

- Price Rs. 16109.00 (A)



- This unisex torso is half life size, offering an outstanding educational value.
- Dissected into 23 parts: torso, female breast plate, head, eyeball, brain, vertebra spinal nerves, lung (2 parts), heart (2 parts), liver, kidney, stomach (2 parts), intestines (4 parts), male genitalia (2 parts), female genitalia with fetus (3 parts).
- Made of PVC plastic.
- Mounted on plastic base.

ZX-1414P Human Head Model Sagittal Section



- Price Rs. 8099.00 (A)
- 33x23x5 cm • Made of PVC
- This extremely elaborate model shows the structure of the brain, spinal cord, nasal cavity, oral cavity and larynx.
- Mounted on base.
- Key card / Manual provided.

ZX-1409E Head, Brain and Eye



- Price Rs. 7919.00 (A)
- Life size • Made of HSP resin
- Model is in 4 parts with 2 parts brain and eye with optic nerve.
- Model shows natural position of nose, mouth cavity, pharynx, occiput & skull base.
- Mounted on board.
- 85 features marked.
- Key card / Manual provided.

DIGESTIVE SYSTEM

ZX-1311PN Digestive System Model PVC



- Price Rs. 21169.00 (A)
- Life size • Made of PVC
- Dissectable in 2 parts.
- The oral cavity, the pharynx and the first part of the esophagus are dissected along the medial sagittal plane. The liver is shown together with the gall bladder and the pancreas is dissected. The Stomach is open along the frontal plane; the duodenum, caecum, part of the small intestine and the rectum are open to expose the interior. The transverse colon is removable. The relief model of the head shows the anatomy of the mouth with salivary glands.
- Mounted on base.
- 51 features marked.
- Key card / Manual provided.

ZX-1301A Human Digestive System



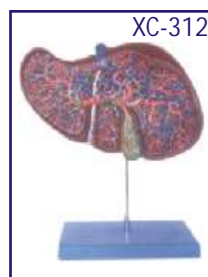
- Price Rs. 8289.00 (A)
- Life size • Made of HSP resin
- Relief model of human digestive system in median section dissectible into 3 parts.
- Duodenum, caecum and rectum are opened. Rectum is unfolded.
- Transverse colon and front half of the stomach are removable.
- The model features the oral cavity, pharynx, esophagus, stomach, liver with gall bladder, pancreas, GI tract and spleen.
- Mounted on sturdy wooden base.
- 56 features marked.
- Key card / Manual provided.

ZX-1446PN

Liver Section & Gallbladder



- Price Rs. 8839.00 (A)
- Life size • Made of PVC
- Model shown liver and gallbladder in open section to expose the complex internal network of arteries, veins and bile ducts.
- Model is displayed in bright different colors for clarity and ease of examination.
- Mounted on base with stand.
- 17 features marked.
- Key card / Manual provided.



XC-312 Liver Model

- Price Rs. 8469.00 (A)
- An economical way to study the basic structure of the liver.
- The complex vessels network in the opened liver, displayed in different colors on this model : hilus vessels, extra-hepatic and intra-hepatic bile ducts. Liver mounted on stand.



ZX-1416PN Liver Model PVC

- Price Rs. 5529.00 (A)
- Life size • Made of PVC
- Model shows lobulation, liver ligaments, portal structure, gallbladder, bile duct system.
- Mounted on base.
- 8 features marked.
- Key card / Manual provided.



ZX-1462P Liver, Pancreas, Duodenum & Spleen Model

- Price Rs. 4609.00 (A)
- Model shows liver, gall bladder, partly dissected pancreas and duodenum, spleen, pancreatic ducts and other vessels, inferior vena cava and abdominal aorta.
- Mounted on base with stand
- Life-size. In 4 parts.
- Made of PVC.



ZX-1408 Stomach

- Price Rs. 4239.00 (A)
- 17x16x25 cm. • Made of HSP resin
- Dissectable in 2 parts.
- It shows different muscle layers of stomach wall.
- Model shows lower esophagus, vessels and nerves.
- Mounted on stand with base.
- 36 features marked.
- Key card / Manual provided.



XC-306 Stomach Model

- Price Rs. 5709.00 (A)
- Made of hard plastic
- Magnified 2 times the natural size
- Shows the morphology of the stomach in a distended state.
- With the longitudinal section, the model shows the structures of the gastric folds, pyloric valve, pyloric sphincter muscles, gastric mucosa and the transitional mucosa of the gastric-esophagus.

ZX-1434P Caecum and Appendix, Enlarged



- Price Rs. 5899.00 (A)
- Size : 1.5 times enlarged
- Made of PVC
- Dissectable in 2 parts
- Mounted on display stand
- Caecum, appendix and its attachment to the large intestine demonstrated.
- Model can be opened to depict folds & texture of internal anatomy.
- Removable portion secured with magnets.
- Key card / Manual provided.

ZX-1514P Rectum Pathologies Model



- Price Rs. 6169.00 (A)
- Size : 22 x 12.5 x 11 cm
- Made of PVC
- Mounted on display stand
- Pathological conditions of the rectum and anus includes- ulcerative colitis, internal & external fistula, internal & external hemorrhoids, annular cancer, sessile polyp, submucosal abscess, skin tag, pedunculated polyp, supralelevator abscess, ischiorectal abscess, cryptitis, diverticulum, condyloma acuminatum, fissure and condyloma latum.
- Key card / Manual provided.

ZX-1606 Intestinal Villi

- Price Rs. 4609.00 (A)
- 31x20x43 cm.
- Made of HSP resin.
- Highly enlarged 3D replica model of small intestine shows one entire villus, one sectioned villus with arterioles and venules and one sectioned villus with lymphatic vessels. The model also shows different muscle layers in section.



- Mounted on sturdy wooden base.
- 17 features marked.
- Key card / Manual provided.

ZX-1511P Diabetes Mellitus Complications Model



- Price Rs. 15469.00 (A)
- Made of PVC
- Easy to remove and assemble.
- The model shows the effects of diabetes on the brain, eye, heart, kidney, artery, pancreas, neuron and foot.
- Model can be used to illustrate effects associated with diabetes: stroke, non-inflammatory disease of the retina, hypertensive heart disease, hardening of the kidney, hardening of the arteries, insulin resistance, neuropathy, and foot ulcerations.
- Key card / Manual provided.

HEART & CIRCULATORY SYSTEM

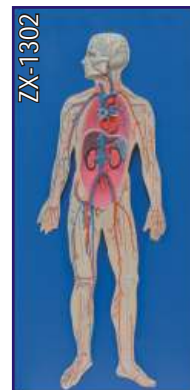
ZX-1312PN Circulatory System Model PVC



- Price Rs. 23939.00 (A)
- Size : Half Life Size
- Made of PVC
- This model is a half life-size relief model which includes a 2 part removable heart and exceptional details.
- Following anatomical structures are in detail: The arterial/venous system, the heart, the lungs, the liver, the spleen, kidneys, and a partial skeleton.
- Mounted on base.
- 70 features marked.
- Key card / Manual provided.

ZX-1302

Human Circulatory System



- Price Rs. 8289.00 (A)
- Half life size
- Made of HSP resin
- Model shows following anatomical structures : Arterial and venous system, Heart showing chambers, Liver, Spleen, Lung, Kidneys, Partial skeleton.
- Mounted on wooden base.
- 81 features marked.
- Key card / Manual provided.

ZX-1500 Blocked Artery Model



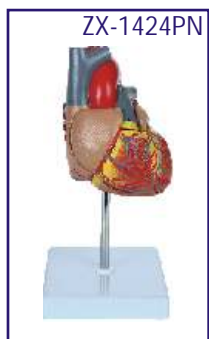
- Price Rs. 3129.00 (A)
- 12x8x4 cm.
- Made of HSP resin
- The model shows 4 stage cross section of narrowing of an artery due to build up of cholesterol and plaque.
- Four stages depict normal artery, fatty streak, fibrous plaque & blockage in order.
- All stages rotate on a hinge pin.
- 8 features marked.
- Key card / Manual provided.

ZX-1611E Blood Groups

- Price Rs. 4049.00 (A)
- 60 x 25 x 6 cm.
- Made of soft PVC
- The model shows eight blood types ie. blood type A-/A+/B-/B+/AB-/AB+/O-/O+ (according to the presence or absence of antigens & Rh factor).
- Mounted on board.
- 12 features marked.
- Key card / Manual provided.



ANATOMICAL MODELS



ZX-1424PN

Heart Model Deluxe Life Size 2 Parts

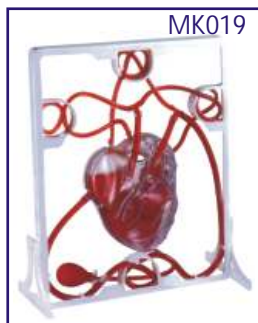
- Price Rs. 3689.00 (A)
- Life size • Made of PVC • Dissectable in 2 parts
- Model parts held together with hidden magnets.
- The front wall of the heart can be removed and replaced easily, allowing for easy study of the internal structures of the heart.
- Mounted on base • 34 features marked.
- Key card / Manual provided.



ZX-1405E

ZX-1405E Human Heart (7 Parts)

- Price Rs. 4239.00 (A)
- 20 x 20 x 22 cm.
- Made of HSP resin
- Model is sectioned to expose ventricles, atria, and valves.
- Model also depicts blood vessels of heart and heart musculature in detail.
- 33 features marked.
- Key card / Manual provided.



MK019

MK019 Pumping Heart

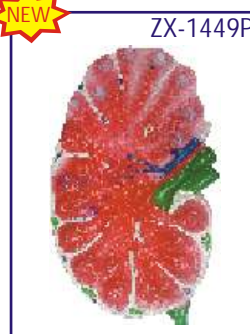
- Price on Enquiry
- A 3-D working plastic heart model with clear chambers. Squeeze bulb pumps simulated blood through clear heart chambers just like real one.
- Complete heart model with display stand.
- Complete instruction manual.
- Acrylic Paints & Brush are included.



XC-307

XC-307 Jumbo Heart Model

- Price Rs. 8659.00 (A)
- Size: 25 x 23 x 23 cm.
- Made of PVC plastic.
- Clear conception of routes of the systemic and pulmonary circulation.
- Dissectible into 3 parts. 4 times enlarged.



ZX-1449P

ZX-1449P Lymph Node

- Price Rs. 3409.00 (A)
- Size: 32x20x10 cm.
- Made of PVC.
- Model shows anatomical features of a lymph node such as capsule, lymph vessels, cortical follicles, blood vessels, trabecula and germinal center.
- Key card / Manual provided.

RESPIRATORY SYSTEM

ZX-1306 Human Respiratory System

- Price Rs. 8289.00 (A)
- Size : 40x80 cm.
- Made of HSP resin.
- Well illustrated and informative.
- Upper half of the model displays nasal cavity, oral cavity, trachea, bronchia, bronchial tree in pulmonary lobe, right and left lungs cut open, heart in situ, pulmonary blood vessels and diaphragm with muscles attached to it.
- Lower half of the model shows enlarged pulmonary acinus displaying pulmonary alveoli, alveolar saccules, bronchial artery and veins and alveolar capillary network.
- Mounted on wooden sturdy base board.
- 38 features marked.
- Key card / Manual provided.



ZX-1306



XC-309

Front View

Rear View

XC-309 The Anatomical Nasal Cavity

- Price Rs. 3589.00 (A)
- This model helps the students to understand:
- External nose : shows the section of the nasal bones and cartilages.
- Nasal cavity : on the lateral nasal wall show the superior, middle and inferior nasal conchae project medially into the nasal cavity forming the superior, middle and inferior nasal maxillary sinuses.
- Paranasal sinuses : shows the frontal, sphenoid and maxillary sinuses.

XC-324

Model of the Head

- Price Rs. 11419.00 (A)
- The relief model of human head shows all relevant structures in great details.
- Natural size.
- Showing interior parts of the oral cavity and pharynx with network of vessels.



XC-324

ZX-1444PN Nasal Oral Cavity Model, Sagittal Section



• Price Rs. 5069.00 (A)



- Life size
- Made of PVC
- This model shows the interior parts of nasal cavity, oral cavity, throat and pharynx.
- Sagittal section
- Mounted on base.
- 12 features marked.
- Key card / Manual provided.

XC-301 Human Larynx Model Magnified

• Price Rs. 3779.00 (A)



- Size : 11.5×11×24 cm, 3 parts dissectible.
- A functional model, On base 3 times enlarged.
- Shows movements of epiglottis & cartilages in the voice box.
- Helps to understand the morphology & structure of the respiratory tract and phonetic organ.



XC-321 Lung Model (4 Parts)

• Price Rs. 7549.00 (A)

- A life-size model separating into 4 parts.
- The lungs have two removable lobes to show the internal structures.
- On stand.

XC-321B Lung Model (1 Part)

• Price Rs. 7089.00 (A)

- Life-size
- Cutaway lung model shows bronchus, arteries, veins, lymph nodes, bronchial passage and trachea bifurcation.



XC-330 Model of the Transparent Lung Segment

• Price Rs. 15649.00 (A)

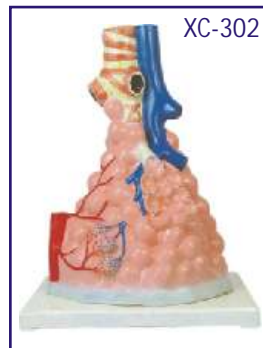
- Presents 10 segments in the right lung and 8 in the left. The distributions of the bronchial tree can be observed through the transparent lungs.
- Right lung: right upper lobe (3 segments), right middle lobe (2 segments), right inferior lobe (5 segments)
- Left lung: left upper lobe (4 segments), left inferior lobe (4 segments).
- Distribution of the bronchial tree: right bronchus, left bronchus.
- Hilus of lung. The lung made of transparent plastic. The trachea & bronchial tree is made of PVC.



XC-302 Pulmonary Alveoli Model Magnified

• Price Rs. 5439.00 (A)

- Size: 26×15×35 cm.
- Made of PVC plastic and mounted on plastic base.
- The model shows the small branches of principal bronchus:
- Section of bronchiole of no cartilage.
- The relation between pulmonary alveoli & terminal bronchiole.
- The structure of alveolar sac and alveolar duct
- The capillary rete in the alveolar sapta.



ZX-S320PN Respiratory System Model 7 Parts PVC



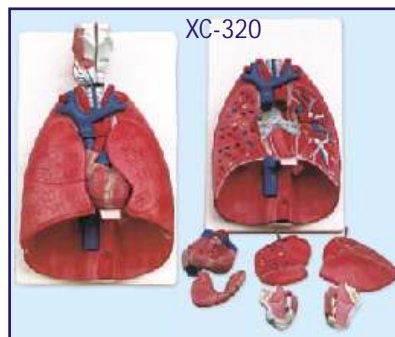
• Price Rs. 18409.00 (A)



- Life size
- Made of PVC
- Dissectable in 7 parts
- Showing the larynx (dissected along the sagittal plane), the lungs (dissected along the frontal plane) & a 2 parts heart.
- Mounted on base.
- 51 features marked.
- Key card / Manual provided.

XC-320 Larynx, Heart and Lungs Model

• Price Rs. 16569.00 (A)



- Life size, 36 × 23 × 12 cm
- Dissectable in 7 parts
- Made of PVC plastic

EYE

ZX-1410



ZX-1410 Eye Model on Stand

- Price Rs. 3499.00 (A)
- 15x15x32 cm. Model is 6x magnified.
- Model is in 7 parts.
- Ideal for basic anatomical study of eye. shows sclera, cornea, eye muscle attachments, iris, retina, optic nerve & vessels.
- Mounted on a removable stand.
- 34 features marked.
- Key card / Manual provided.

ZX-1451PN Giant Eye Model Dx.

- Price Rs. 5159.00 (A)
- 17x15x20cm.
- Made of PVC
- Dissectible in 7 parts.
- 12 parts labeled in total.
- Model is on base with stand.
- Key card / Manual provided.

ZX-1451PN



XC-316B



XC-316B

Eye with Orbit

- Price Rs. 11969.00 (A)
- The model shows the eyeball with optic nerves & muscles in its natural position in the bony orbit.
- Dissectible into 10 parts.
- 3 times enlarged.

EAR



XC-303C

XC-303C

Ear Model New Style Giant Size

- Price Rs. 7549.00 (A)
- Dissectible in 6 parts.
- Made of PVC Plastic.
- Size 33x15x23 cm.

SKIN



XC-313-3

XC-313-3

Skin Section Model

- Price Rs. 8199.00 (A)
- This model shows layers of skin, first rudiments of hair, sweat gland, sense organs of skin.
- Connected with side hinges.
- On base.

ZX-1604A Skin Model

- Price Rs. 3689.00 (A)
- 21x10x25 cm.
- Made of HSP resin
- Model shows 3-D section of human skin.
- The model represents differentiated skin layers, hair, sweat glands, sebaceous glands, blood vessels, nerves and receptors for detailed examination.
- Mounted on sturdy wooden board for easy display.
- 35 features marked.
- Key card / Manual provided.



ZX-1604A

ZX-1401 Human Skin

- Price Rs. 2489.00 (A)



ZX-1401

- Size 30x35 cm.
- Made of HSP resin.
- The skin relief model of a skin section of the head.
- Skin section portrays the anatomy of the skin at 70 times life size.
- The skin model shows:- Representation of hair follicles with sebaceous glands, Sweat glands, Receptors, Nerves, Blood Vessels, Different layers of the skin.
- Mounted on sturdy wooden base.
- 31 features marked.
- Key card / Manual provided.

XC-313 Skin Model Enlarged

- Price Rs. 7089.00 (A)



XC-313

- A greatly enlarged (105 times) cross sectional view of the human skin showing three layers-epidermis, dermis, hypodermis, structures of the human scalp and a close-up view of a hair follicle, sweat gland, fatty tissue, sebaceous gland, blood vessels & nerves. Front, side and back view.
- Mounted on a plastic base.
- Size: 27 × 10 × 31cm.

REPRODUCTIVE SYSTEM

ZX-1304 Human Reproductive System Male

- Price Rs. 8289.00 (A)
- 40x80 cm. • Made of HSP resin
- Upper half part shows median section of the system.
- Internal organs (accessory organs) shown in great detail are epididymis, vas deferens, ejaculatory ducts, urethra, seminal vesicles, prostate gland and bulbourethral gland.
- External structures shown are penis, scrotum and testicles.
- Lower half shows the model of scrotum and contents along with the penis.
- 41 features marked.
- Key card / Manual provided.



ZX-1305 Human Reproductive System Female

- Price Rs. 8289.00 (A)
- 40x80 cm. • Made of HSP resin
- Upper half model shows both ovaries, left ovary in section, fallopian tubes with fimbriae, uterus, cut open vagina to show vaginal folds and cervix, bladder with cut open urethra, labia and rectum.
- Lower half model shows adnexa of uterus.
- 56 features marked.
- Key card / Manual provided.



ZX-1417PN Male Pelvis Section Diss. PVC



- Price Rs. 16569.00 (A)
- 30x22.5x27.5 cm • Made of PVC
- Dissectable in 4 parts
- Open through the medial sagittal section of male pelvis, this model shows the internal organs of urinary, male reproductive system and muscular anatomy
- Mounted on base.
- 26 features marked.
- Key card / Manual provided.

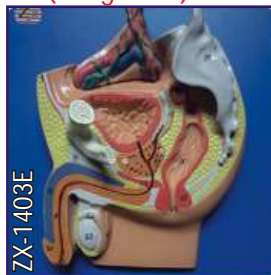


ZX-1418PN

- Price Rs. 17489.00 (A)
- 30x22.5x27.5 cm • Made of PVC
- Dissectable in 3 parts
- This model shows the urinary and female reproduction system along with muscular anatomy
- Half of the pelvis is shown, along with a removable attachment to see the outer reproductive organs
- Mounted on base.
- 27 features marked.
- Key card / Manual provided.

ZX-1403E Male Pelvis Small (Magnetic)

- Price Rs. 2489.00 (A)
- 25x25x8 cm. • Made of HSP resin
- Model is in 3 parts.
- Median section model shows male genital organs in normal position.
- Model is mounted on board.
- 36 features marked.
- Key card / Manual provided.



ZX-1404E Female Pelvis Small (Magnetic)

- Price Rs. 2489.00 (A)
- 25x25x8 cm. • Made of HSP resin
- Model is in 2 parts.
- Median section model shows female genital organs in normal position.
- Model is mounted on board.
- 31 features marked.
- Key card / Manual provided.



ZX-1441PN



ZX-1441PN Female Uterus Ovary Model

- Price Rs. 5529.00 (A)
- Life size • Made of PVC
- It shows sectioned vagina, cervix, uterus, fallopian tubes and ovary with follicles.
- Mounted on a Stand.
- Key card / Manual provided.

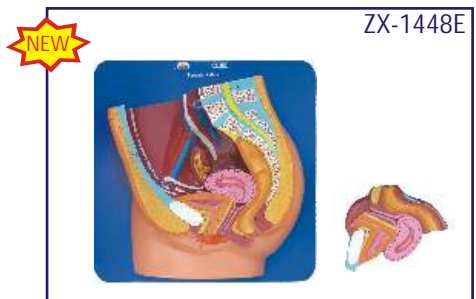


ZX-1445P



ZX-1445P Female Pelvic Anatomy Model

- Price Rs. 4049.00 (A)
- Size: 18x14x14.5 cm.
- Model is showing anatomy of median sagittal section of the female pelvis.
- Suitable for pharmaceutical promotion.
- Mounted on base.
- Key card / Manual provided.



ZX-1448E



ZX-1448E Female Pelvis 2 Parts

- Price Rs. 4609.00 (A)
- Size 30x30x10 cm
- Made of HSP
- Total 22 parts labeled.
- Sagittal section of female pelvis in 2 parts.
- Model shows all important organs of female pelvis.
- Key card / Manual provided.

EXCRETORY SYSTEM

ZX-1303 Human Excretory System

- Price Rs. 8289.00 (A)
- 40x80 cm • Made of HSP resin
- Fixed on wooden board for easy display.
- It shows the structures of the retroperitoneal cavity which includes : descending aorta, inferior vena cava, renal veins and arteries, ureter, urinary bladder cut open to show trigone and other structures, adrenal glands, both kidneys, iliac vessels and prostate gland.
- Left kidney, adrenal gland, testis and penis shown in section.
- The model has anatomical details that makes it a great teaching aid.
- 36 features marked.
- Key card / Manual provided.



ZX-S333P Urinary System Block Model Dual Sex, 6 Parts

- Price Rs. 22089.00 (A)
- Life Size • Made of PVC
- Mounted on stand. • Dual sex
- It shows components of urinary system, posterior abdomen wall, kidney, adrenal gland & bladder.
- It also shows pelvic bone and muscles, Inferior vena cava, aorta with its branches including iliac vessels and Rectum.
- One front half of a kidney is removable
- Key card / Manual provided.



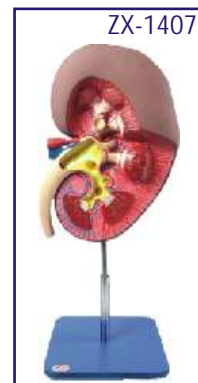
ZX-1452PN Kidney with Adrenal Gland, 2 Parts

- Price Rs. 3689.00 (A)
- Life Size • Made of PVC
- Model shows internal structure of a kidney including cortex, pyramids, papillae, renal pelvis, calyx, artery and veins.
- 10 parts labeled in total • Dissectible in 2 parts.
- Mounted on base with stand.
- Key card / Manual provided.



ZX-1407 Kidney

- Price Rs 3959.00 (A)
- Size: 3x of life size. • Made of HSP resin
- Shows a longitudinal section of the left kidney.
- Mounted on stand. • 31 features marked.
- Key card / Manual provided.



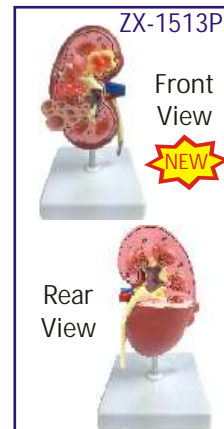
ZX-1603 Kidney Microstructure

- Price Rs. 7369.00 (A)
- 30x20x24 cm • Made of HSP resin
- Beautifully painted in advanced colours.
- A complete 3-D model shows 5 sides view of following structures in great details : kidney in section, parenchyma of kidney and nephron, renal corpuscle and associated structures, loop of henle and associated structures.
- Mounted on sturdy wooden base.
- 45 features marked.
- Key card / Manual provided.



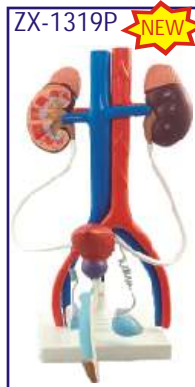
ZX-1513P Kidney Pathologies Model

- Price Rs. 5709.00 (A)
- Size: 15 x 9 x 3 cm.
- It shows pathological complications of a kidney like infection, scarring, atrophy, urinary (kidney) stones, tumors, polycystic disease and hypertension on one side.
- The other side shows a normal kidney features.
- Mounted on base.
- Key card / Manual provided.



ZX-1319P Male Urogenital System

- Price Rs. 3689.00 (A)
- Model shows right kidney in cut section, left kidney, adrenal glands, ureters, inferior vena cava, abdominal aorta, renal vein & artery, iliac vein & artery, urinary bladder in 2 parts, testicles, prostate and cut section of penis
- Made of Plastic.
- Size 19x25x34 cm.



ZX-1320P Female Urogenital System

- Price Rs. 3689.00 (A)
- Model shows right kidney in cut section, left kidney, adrenal glands, ureters, inferior vena cava, abdominal aorta, renal vein and artery, iliac vein and artery, urinary bladder, ovary, uterus and vagina
- Made of Plastic.
- Size 21x21x34cm.



XC-332 Female Urogenital System

- Price Rs. 6079.00 (A)
- It shows kidney, ureter, urinary bladder, vagina, ovary membrane, uterus, ligaments and artery etc.
- Made of PVC plastic.
- Size 20 x 20 x 50 cm.



BRAIN & NERVOUS SYSTEM

XC-308



XC-308 Brain with Arteries

- Price Rs. 5619.00 (A)
- Made of PVC plastic.
- Dissectible into 8 parts. On base.
- Natural size: 18.5×14×13.5cm.
- External features of the brain: cerebral hemisphere, brain stem, cerebellum.
- The arterial supply of the brain: sources, vertebral, internal carotid arteries, arterial supply of the cerebellum and cerebrum.

XC-318 Brain With Arteries on Head

XC-318



- Price Rs. 9849.00 (A)
- This model shows the brain structure inside the skull. Two halves of brain can be disassembled into: frontal with parietal lobes, temporal with occipital lobes, half of brain stem, half of cerebellum.
- Life-size, dissectible into 9 parts.

ZX-1422PN



ZX-1422PN Brain Model Deluxe Enlarged 4 parts

- Price Rs. 24859.00 (A)
- Size : 1.5 times enlarged
- Made of PVC
- Dissectable in 4 parts
- Showing the temporal and occipital lobes, the frontal & parietal lobes, the cerebellum, the brain stem in different colors.
- Mounted on metal stand with wooden base.
- 142 features labeled & relevant descriptive names written directly on model.
- Key card / Manual provided.



ZX-1610E



ZX-1610E Reflex Arc

- Price Rs. 4049.00 (A)
- 30x40x3 cm.
- Made of HSP resin
- The model shows sensory, neural & motor elements of a complete reflex arc.
- Mounted on sturdy wooden base.
- 22 features marked.
- Key card / Manual provided.

ZX-1317PN



ZX-1317PN Nervous System Model PVC

- Price Rs. 25779.00 (A)
- Size : Half size
- Made of PVC
- Well illustrated and informative
- Beautifully painted in bright colors
- Model is accurately made from actual specimen references, photographs and encyclopedia reference under expert guidance.
- Model is great teaching tool for anatomy lessons.
- Mounted on base.
- 33 features marked.
- Key card / Manual provided.



ZX-1307



ZX-1307 Human Nervous System

- Price Rs. 8289.00 (A)
- Half life size
- Made of HSP resin
- Model is a schematic representation of the central and peripheral nervous system, including spinal nerves radiated from central nervous system to other parts of body.
- Mounted on wooden base board.
- 39 features marked.
- Key card / Manual provided.

ZX-1614PN Neuron Model, 2 Parts

- Price Rs. 14729.00 (A)
- Size : 40x26x11 cm
- Made of PVC
- Neuron model with dendrite and axon is shown.
- 13 parts labeled in total.
- Mounted on base.
- Key card / Manual provided.



ZX-1614PN



ZX-1602



ZX-1602 Neuron

- Price Rs. 6449.00 (A)
- 30x20x12 cm
- Made of HSP resin.
- Motor neuron model in three-dimension.
- Model shows branching dendrites, myelin-wrapped axon and node of Ranvier.
- Removable axon section shows cytological ultra structure, layers of myelin sheath, neurolemma and schwann cell.
- 19 features marked.
- Key card / Manual provided.

CPR MANIKINS & AED TRAINER

ZX-CM1100 CPR Manikin Adult Half Body Basic

• Price Rs. 18409.00 (A)



- Breathing function : Real-like system
- AED compatible (AED not included)
- Ultra hygienic
- Realistic opening of airway.
- 5 pieces of Face Shield included.

ZX-CM1110 CPR Manikin Adult Half Body Basic With Wrist Band, Face Shield and Travel Bag

• Price Rs. 28539.00 (A)



- Same as ZX-CM1100
- 5 pieces of Face Shield included.
- Wrist band included which can check the depth and speed of compression and give real-time feedback.
- Supplied with Travel Bag

ZX-CM1900 CPR Face Shields

• Price Rs. 2489.00 (A)



- Used for individual hygiene while practicing CPR.
- Pack of 50 Pcs.



AED01 AED Trainer

• Price Rs. 24859.00 (A)

- The AED Trainer with Replaceable Language/Scenario Card is designed to effectively train emergency responder in the use of an Automated External Defibrillator (AED). This training unit provides a variety of pre-programmed scenarios to help responders become familiar with an AED and allow them to demonstrate the basic skills necessary to use an AED in an emergency.
- AED Trainer provides simulated shock delivery. It has no high-voltage capabilities, and cannot deliver a shock, thereby ensuring safety during training.



AED03 Mini AED Trainer

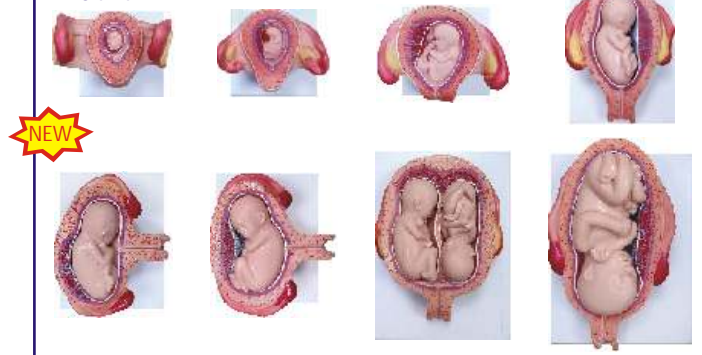
• Price Rs. 9489.00 (A)

- The Mini AED Trainer is designed to effectively train emergency responders in the use of an Automated External Defibrillator (AED).
- This trainer helps responders become familiar with an AED and allow them to demonstrate the basic skills necessary to use an AED in an emergency. No high-

voltage, ensuring safety during training. It is compliant with the latest AHA Guidelines. Voice broadcast and LED display.

GYNAE & OBSTETRIC MODELS

ZX-S414H



ZX-S414H Fetal Development Model set of 8

• Price Rs. 38659.00 (A)

- Size : Half size • Made of PVC
 - Each model mounted on separate base.
 - Keycard / Manual provided.
 - Shows the development from ovum to the fetus in 7th month.
- | | |
|---------------------------------------|--|
| A: 1st Month Embryo | E-I: 5th Month Foetus (Transverse Lie) |
| B: 2nd Month Embryo | E-II: 5th Month Foetus (Transverse Lie) |
| C: 3rd Month Embryo | E-III: 5th Month Twin Foetuses (Normal Position) |
| D: 4th Month Foetus (Breech Position) | F: 7th Month Foetus |

ZX-1706PN Human Embryo Model, Enlarged (Four weeks old)

• Price Rs. 5529.00 (A)

- Size : 25 times enlarged
- Made of PVC
- 20 parts labeled in total.
- Well illustrated and informative.
- Great for studying human development and having as a desktop model for quick reference and for education.
- Keycard / Manual provided.



ZX-1700PN Human Placenta Model with Cord

• Price Rs. 7829.00 (A)

- Size : Life size • Made of PVC
- It shows structure of placenta from maternal & fetal side both.
- It also shows the relation between placenta and umbilical cord.
- Umbilical cord clearly shows umbilical vessels
- Maternal side: shows dark maroon structure of the decidua featuring the cotyledons



- Fetal side: reveals the amnion (amniotic membrane) partially removed, exposing the intervillous space.
- 8 features marked. • Keycard / Manual provided.

DENTAL MODELS

ZX-1427

Teeth Care Model Enlarged with Giant Teeth Brush

- Price Rs. 4049.00 (A)



- 15x16x22cm, 3x Life size
- Made of PVC
- Model shows complete set of teeth with gums & tongue.
- A flexible joint between the jaws allows easy movement.
- Key card / Manual provided.

ZX-1411 Dental Care Model

- Price Rs. 3409.00 (A)



- Highly enlarged dental model with normal tooth brush.
- Size: 22x16x15 cm.
- 3x life size.

ZX-1442 Dental Model Life Size

- Price Rs. 929.00 (A)



- Life size
- It shows the upper & lower jaw hinged with rod & screw.
- 28 fixed non removable teeth shown.
- Key card / Manual provided.

ZX-1442K Oral Hygiene Training Kit

- Price Rs. 1289.00 (A)



- Life size Dental Model.
- Play -way kit to understand teeth structure and technique for proper oral hygiene.
- Includes: Teeth model, tooth brush, clay, dice & pawns, sketch pen, booklet.

ZX-1443 Dental Practice Typodont Model

- Price Rs. 7829.00 (A)

- Life size
- 28 removable teeth in this model.
- Students will be able to practice preparing the teeth for restoration, whether that is cavity fillings, crowns, or bridges.
- The model features plastic teeth screwed with metal screws in place, soft gingiva, and a soft palate. One crosshead mini screwdriver is provided.
- A metal hinge holds the top and bottom jaws together.
- Key card / Manual provided.



ZX-1512P Dental Caries Model

- Price Rs. 5899.00 (A)

- Size: 4 times enlarged
- Shows cavities in 3 molars removable from gum sockets. Each molar is longitudinally sectioned in 2 parts.
- 3 stages of cavities (shallow, medium & deep) are shown, one in each molar.
- Morphological structure of the molar tooth is well depicted.
- Key card / Manual provided.

ZX-1454P

Dental Model Adult, 2 parts

- Price Rs. 9389.00 (A)

- Made of PVC
- Size: Life size
- Model shows upper and lower jaw of an adult
- Movable lower jaw showing natural movement.
- Model shows complete set of permanent teeth with roots and nerves (mandible cut open to expose).
- On stand with base



ZX-1455P

Dental Model Child, 2 parts

- Price Rs. 9759.00 (A)

- Made of PVC
- Size: Life size
- Model also shows eruption of milk teeth stages
- Model consists of opened upper and lower jaw showing structures of a child's teeth and nerves
- On stand with base

HISTOLOGY AND BIOMOLECULES MODELS



ZX-1613 DNA Model

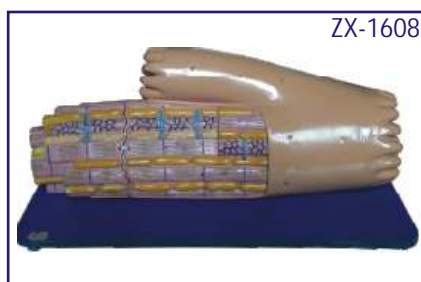
- Price Rs. 4789.00 (A)
- Stands 40cm tall
- Made of Plastic
- Mounted on stand.
- 18 layers, 9 each of AT& GC.
- Handy demonstration model of DNA helix.
- Parts are colour coded and represent purines, pyrimidines, deoxyribose & phosphate groups that make up the double helix of DNA.
- Model is great teaching tool.
- Key card / Manual provided.



DN001

DNA Model Kit

- Price Rs. 3409.00 (A)
- Made of Plastic.
- Ready to assemble model.
- Size: 10 x 10 x 45 cm.



ZX-1608

ZX-1608

Cardiac Muscle Fibre

- Price Rs. 5159.00 (A)
- Block model is greatly enlarged cardiac muscle fibre.
- The model shows significant anatomical structures such as sarcolemma, nucleus, mitochondria, transverse tubules, cardiomyocytes, sarcoplasmic reticulum, intercalated disc, M line, Z disc & various filaments.
- Mounted on durable wooden base.
- Size: 41 x 20 x 19 cm
- 17 parts labeled in total.



ZX-1607

ZX-1607

Smooth Muscle Fibre

- Price Rs. 5159.00 (A)
- Block model is a greatly enlarged smooth muscle fibre.
- The model shows significant structures including sarcoplasm, nucleus, mitochondria, dense body, filaments, autonomic neurons and gap junction.
- Size: 36 x 25.5 x 13 cm
- 18 parts labeled in total.

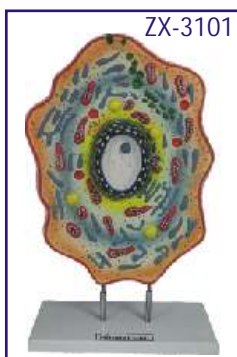
ZX-1609 Skeletal Muscle Fibre

- Price Rs. 5159.00 (A)

- Block model is greatly enlarged model of skeletal muscle fibre.
- Model shows various anatomical structures like neuromuscular junction, T tubules, myofibrils, bands, nucleus etc.
- Mounted on wooden base.
- 21 parts labeled in total.
- Size: 20 x 20 x 19 cm.



ZX-1609



ZX-3101

ZX-3101 Animal Cell Model

- Price Rs. 4789.00 (A)
- Made of high grade synthetic polymer having long durability.
- Delivered with removable stand.
- Size: 30x40x10 cm.
- Well illustrated & informative.
- 19 features marked.
- Beautifully painted in bright colors.



ZX-2103

ZX-2103 Plant Cell Model

- Price Rs. 4789.00 (A)
- Plant cell model depicts magnified view with all important structures such as chloroplast, mitochondria, nucleus, golgi bodies etc.
- Mounted on sturdy wooden base.
- Size: 35 x 15 x 49 cm.
- 17 features marked.



ZX-2100

ZX-2100 Chloroplast

- Price Rs. 11049.00 (A)
- Block model is highly enlarged open section of a typical chloroplast.
- Model shows inner & outer membranes, granum, stroma, DNA, starch granule, Osmiophilic globule and thylakoids.
- Mounted on sturdy wooden base.
- Size: 36 x 25.5 x 19 cm.
- 13 features marked.

ZX-2101



ZX-2101

Mitochondria

• Price Rs. 4609.00 (A)

- Block model is highly enlarged open section of typical mitochondria.
- Model shows outer and inner membranes, cristae, ribosomes, matrix, mitochondrial DNA, etc.
- Mounted on sturdy wooden base.
- Size: 41 x 21 x 13 cm.
- 10 features marked.

ZX-2102



ZX-2102

Bacterium

• Price Rs. 11049.00 (A)

- Model is greatly enlarged bacterium model depicting anatomical complexity of a general prokaryotic cell.
- The model is a set of 4 models including block models of the cell wall of gram positive and gram negative bacteria, opened bacterial spore showing spore coat & internal structures and main bacterium.
- Mounted on sturdy wooden base.
- Size : 55x40x9.5 cm.
- 34 features marked.

ZX-3100E

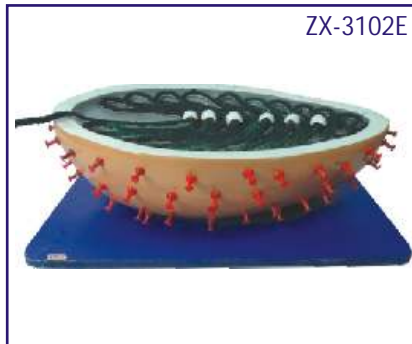


ZX-3100E AIDS VIRUS

• Price Rs. 3039.00 (A)

- Highly enlarged detailed model of HIV (Human Immunodeficiency Virus) commonly called AIDS virus.
- Model shows outer lipid membrane with protein structures, internal nucleus with viral RNA.

ZX-3102E

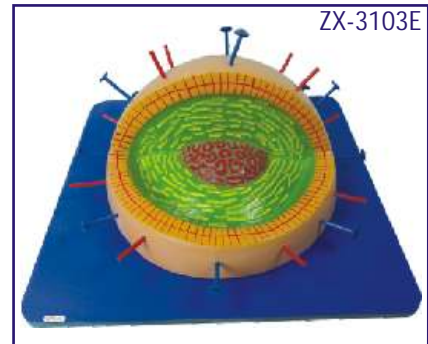


ZX-3102E Rabies Virus

• Price Rs. 5439.00 (A)

- Model of rabies virus is enlarged millions of times to show viral RNA, lipid envelope, glycoprotein, polymerase etc.
- Mounted on wooden base.
- Size : 35x25x10 cm.
- 6 features marked.

ZX-3103E



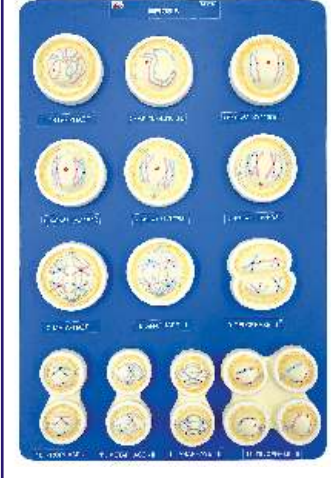
ZX-3103E Influenza Virus

• Price Rs. 5439.00 (A)

- This millions of times enlarged model of influenza virus shows lipid envelope, capsid, nucleoprotein, hemagglutinin and neuraminidase.
- Mounted on wooden base.
- Size : 35x35x16 cm.
- 5 features marked.

NEW

ZX-3105



ZX-3105 Mitosis Model

• Price Rs. 8839.00 (A)

- Set of 10 stages model showing interphase, early prophase, mid prophase, late prophase, early metaphase, late metaphase, early anaphase, late anaphase, telophase and cytokinesis.
- Mounted on board. • With key card/manual.
- Size: 60x40x5 cm.

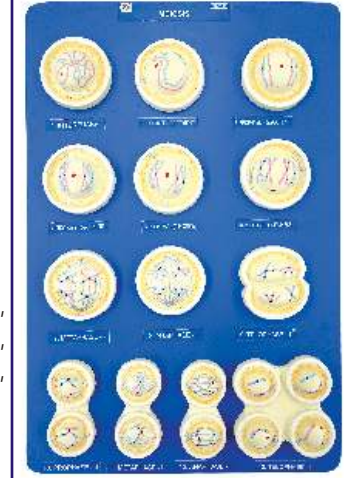
ZX-3106 Meiosis Model

• Price Rs. 8839.00 (A)

- Set of 13 stages model of meiosis showing interphase, leptotene, zygotene, pachytene, diplotene, diakinesis, metaphase-I, anaphase-I, telophase-I, prophase-II, metaphase-II, anaphase-II and telophase-II.
- Mounted on board. • With key card/manual.
- Size: 60x40x5 cm.

NEW

ZX-3106



TELESCOPES



Product code :	F36050R	Product code :	F70060RU
Name :	Telescope Refractor F360D50 AZ	Name :	Telescope Refractor F700D60 U-Mount
Aperture :	50mm	Aperture :	60mm
Focal Length :	360mm	Focal Length :	700mm
Focal Ratio :	f/7	Focal Ratio :	f/11.6
		Eyepiece :	SR4mm, H12.5mm, H20mm
		Price :	Rs. 3689.00(A)

Eyepiece :	6mm, 20mm
Prism :	90°
Accessories :	1.5× Erector
Stand :	Aluminum Tripod Telescopic
Price :	Rs. 3689.00(A)



Product code :	D30076LW	Product code :	F70076LU
Name :	Telescope Reflector F300D76 DB	Name :	Telescope Reflector F700D76 U-Mount
Aperture :	76mm	Aperture :	76mm
Focal Length :	300mm	Focal Length :	700mm
Focal Ratio :	f/3.9	Focal Ratio :	f/9
		Eyepiece :	SR4mm, H12.5mm, H20mm
		Price :	Rs. 9389.00(A)

Eyepiece :	H6mm, H20mm
Accessories :	2× Barlow
Stand :	Dobson Wooden frame inclined rotatable 360°
Price :	Rs. 9389.00(A)



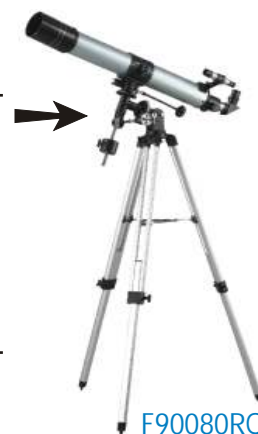
Product code :	F1000114LQ	Product code :	F90080RQ
Name :	Telescope Reflector F1000D114 EQ	Name :	Telescope Refractor F900D80 EQ
Aperture :	114mm	Aperture :	80mm
Focal Length :	1000mm	Focal Length :	900mm
Focal Ratio :	f/8.8	Focal Ratio :	f/11
Eyepiece :	K10mm, K25mm	Prism :	90°
		Price :	Rs. 33139.00(A)

Accessories :	Finderscope 6×30, Moon Filter, Sun Filter, 2× Barlow Lens
Stand :	Aluminum Telescopic Tripod EQ3 max. height-135 cm
Price :	Rs. 33139.00(A)



Product code :	F750150LQ	Product code :	F90080RQ
Name :	Telescope Reflector F750D150 EQ	Name :	Telescope Refractor F900D80 EQ
Aperture :	150mm	Aperture :	80mm
Focal Length :	750mm	Focal Length :	900mm
Focal Ratio :	f/5	Focal Ratio :	f/11
		Prism :	90°
		Price :	Rs. 50629.00(A)

Eyepiece :	PL6.5mm, PL25mm
Accessories :	Finderscope 6×30
Stand :	Telescopic Aluminum Tripod EQ3 max. height 135cm
Price :	Rs. 50629.00(A)



BINOCULAR



FX1050

FX1050 10 x 50MM BINOCULARS

• Price Rs. 4419.00 (A)

- 10x magnification
- Focusing Knob
- Neck strap
- Eye piece with rubber coating
- 50mm dia objective
- Rubber covered body
- Superior Lenses

ROCKET MODELS



ZX-4111

ZX-4111 ROCKET GSLV Mk-III

• Price Rs. 92039.00 (A)

- The Geosynchronous Satellite Launch Vehicle (GSLV) Mk-III is the most prestigious rocket developed by India. The GSLV Mk-III can place satellites weighing 2000-2500 kg into the Geosynchronous Transfer Orbit (GTO). The GSLV Mk-III is a three-stage vehicle. The first stage consists of two S200 solid boosters attached to the core rocket. The second stage of the main rocket is a liquid-fueled stage. The third stage is powered by a single CE-20 engine, which is the first cryogenic engine developed by India.
- Details of the model of the GSLV Mk-III rocket :
 - Height of the main rocket: 181 cm.
 - Height of the rocket boosters: 113 cm.
 - Diameter of the main rocket: Approx 20 cm.
 - Diameter of the rocket boosters: Approx 14 cm.
 - Size of the Base L X B X H: 76 X 45 X 13 cm.



ZX-4100E

ZX-4100E

ROCKET MODEL

- Price Rs. 2399.00 (A)
- Small size.
- Height 44 cm.

ZX-4101E

ZX-4101E

ROCKET MODEL

- Price Rs. 3319.00 (A)
- Large size.
- Height 71 cm.

SCIENCE TEACHING KITS

NEW



ZX-42000

ZX-42000 HORSESHOE MAGNET, GIANT

• Price Rs. 649.00 (A)

- Size 21x18x2.5 cm
- Material : Horseshoe shaped plastic case containing two magnets in the feet.
- Weight : 200g
- Easy grip handle on top.
- North (N) and South (S) poles are marked at the feet of the magnet

NEW



ZX-42001

ZX-42001 MAGNETIC FIELD DEMONSTRATOR, CYLINDER

• Price Rs. 3959.00 (A)

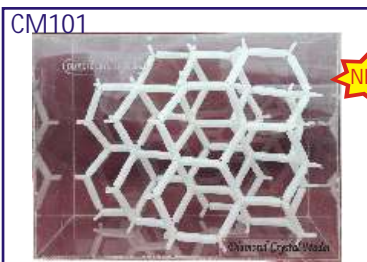
- Size Diameter: 17.5 cm, height: 20 cm
- Material : Acrylic metal & magnet.
- Model is ideal to show magnetic lines of force of a bar magnet and a u shaped magnet.
- Bar magnet and u shaped magnets included
- More than 300 miniature needles are installed on transparent panels to illustrate magnetic lines of force.
- Model contains removable side panel for the placement of the magnets.

SCIENCE TEACHING KITS



AM001 ATOMIC MODEL SET SUPERIOR

- Price Rs. 13169.00 (A)
- The set consists of moulded balls and sticks of different colours and size arranged in different size lugs.
- The set is very helpful in modelling different compounds with the help of given keycard.
- Box size : 51 x 39 x 7 cm.

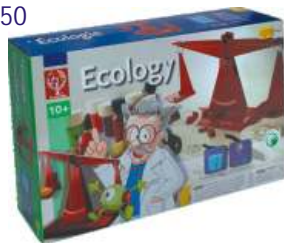


CM101 Diamond Crystal Model

- Price Rs. 2949.00 (A)
- Size 24x18x13 cm
- Made of plastic.
- In transparent acrylic box.

TK8650

Age 10+



TK8650 Ecology

- Price Rs. 7459.00 (A)
- 150 Experiments dealing with ecology.
- Topics include bacteriology, climate, water, air, nature, chemical analysis, water and soil pollution, recycling and acid rain.
- Understand the problems & improve the environment.

TK4003

Age 8+



TK4003 Wake Me Robot

- Price Rs. 4329.00 (A)
- Place it next to your bed at night.
- In the morning when light falls on it, the robot will start to move and buzz.
- Easy to assemble - no soldering required.

CM102



CM102 Graphite Crystal Model

- Price Rs. 2949.00 (A)
- Size 21x15x10 cm
- Made of plastic.
- In transparent acrylic box.

TK8950

Age 10+



TK8950 Energy

- Price Rs. 8659.00 (A)
- More than 200 experiments.
- Kit gives an understanding of the various kinds of energy sources, how to transform them and use them.
- Learn about windmills, levers, solar energy, batteries, electricity, electrochemistry and more.
- Make your own simple machines.

NEW

ZX-81005



Front

Back

ZX-81005 Map Measurer (Rotometer)

- Price Rs. 929.00 (A)
- Size: 9.5x4.5x1.5 cm.
- Material: Metal & Plastic.
- Hands on dials can be set to zero manually.

SE92 Compass Liquid Metallic Body 45 mm

- Price Rs. 829.00 (A)
- Size: 7.7x5.5x2.7cm.
- Material: Metal & Plastic.
- Keep at a safe distance from magnetic or electrical sources for proper functioning of compass.



SE92

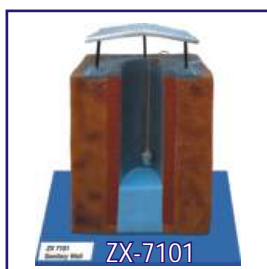
COMMUNITY HEALTH MODELS

- Made of high grade materials having long durability
- Mounted on sturdy wooden frame for easy display
- Supplied with well illustrated informative literature
- Well labeled parts
- Beautifully painted in bright colors
- Model is a great teaching tool for nursing students

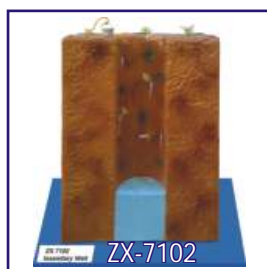
COMMUNITY HYGIENE

ZX-7101 - Sanitary WellPrice Rs. 10129.00 (A)
 ZX-7102 - Insanitary WellPrice Rs. 10129.00 (A)
 ZX-7103 - Deep and Shallow WellPrice Rs. 10129.00 (A)
 ZX-7104 - Deep Tube WellPrice Rs. 11969.00 (A)

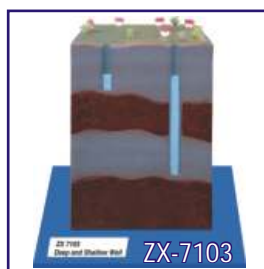
ZX-7105 - Step WellPrice Rs. 11969.00 (A)
 ZX-7106 - Berkefeld FilterPrice Rs. 10129.00 (A)
 ZX-7107 - Slow Sand FilterPrice Rs. 12889.00 (A)
 ZX-7108 - Rapid Sand FilterPrice Rs. 11049.00 (A)



ZX-7101



ZX-7102



ZX-7103



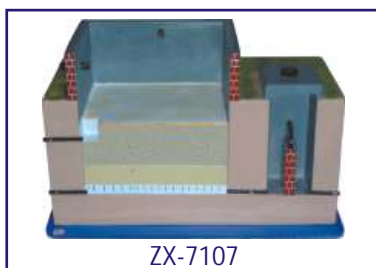
ZX-7104



ZX-7105



ZX-7106



ZX-7107



ZX-7108

ENVIRONMENTAL SANITATION

ZX-7201 - House Drainage System.....Price Rs. 12889.00 (A)
 ZX-7202 - Chamber Type Incinerator.....Price Rs. 12889.00 (A)
 ZX-7203 - Activated Sludge Process.....Price Rs. 12889.00 (A)
 ZX-7204 - Bore Hole LatrinePrice Rs. 10129.00 (A)
 ZX-7205 - Dug Well Latrine (Pit Latrine) .Price Rs. 10129.00 (A)

ZX-7206 - Trench LatrinePrice Rs. 11049.00 (A)
 ZX-7207 - Septic Tank LatrinePrice Rs. 11969.00 (A)
 ZX-7208 - Biogas Plant.....Price Rs. 12889.00 (A)
 ZX-7209 - Smokeless Chulha.....Price Rs. 11969.00 (A)



ZX-7201



ZX-7202



ZX-7203



ZX-7204



ZX-7205



ZX-7206



ZX-7207



ZX-7208



ZX-7209

(A) - GST@18% is included in the price.

SCIENCE WORKING MODEL

PHYSICS



PH 1014 S
Working of Switch - DIY
Price Rs. 739.00 (A)



PH 1036 C Conductor and Insulator - DIY
Price Rs. 779.00 (A)



PH 1013 S Mag. Spring / Repulsion of Magnets -DIY
Price Rs. 299.00 (A)



PH 1034 T Make Your Own Sundial - DIY
Price Rs. 909.00 (A)



PH 1003 S
Levitation of Pencil - DIY
Price Rs. 549.00 (A)



PH 1042 C
Yarn Spindle - DIY
Price Rs. 349.00 (A)



PH 1043 S Fibre to Fabric - DIY
Price Rs. 1189.00 (A)



PH 1008 S
Working of LED - DIY
Price Rs. 209.00 (A)



PH 1019 S Uses of Pulley In Our Life - DIY
Price Rs. 659.00 (A)



PH 1007 S
Day and Night - DIY Kit
Price Rs. 889.00 (A)



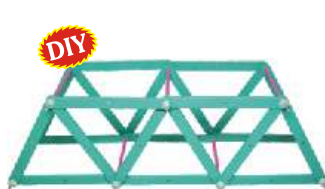
PH 1025 S Infinite Images (Parallel Mirrors)- DIY
Price Rs. 409.00 (A)



PH 1044 S Make Your Own Compass - DIY
Price Rs. 329.00 (A)



PH 1045 C Multi Circuit Panel Board - DIY
Price Rs. 3,409.00 (A)



PH 1046 C Make Your Own Bridge - DIY
Price Rs. 479.00 (A)



PH 1021 T Bernoulli Bag (Capacity of Lungs) - DIY
Price Rs. 199.00 (A)



PH 1086 S
Elastic Powered Boat - DIY
Price Rs. 409.00 (A)



PH 1047 C Electricity and Magnetism Kit - DIY
Price Rs. 2,959.00 (A)



PH 1048 S Electromagnet Making Kit
Price Rs. 739.00 (A)



PH 1049 S Electromagnetic Repulsion - DIY
Price Rs. 889.00 (A)



PH 1016 C Mixing of Col. & White Light Formation
Price Rs. 999.00 (A)

WORKING MODELS



PH 1050 C
Anemometer - DIY
Price Rs. 549.00 (A)



PH 1015 S
Reflection of Light Kit - DIY
Price Rs. 589.00 (A)



PH 1051 T
Mag. Levitation
& Maglev Train - DIY
Price Rs. 1,129.00 (A)



PH 1052 T Working
Model of Tornado - DIY
Price Rs. 2,479.00 (A)



PH 1053 S Kaleidoscope
Making Kit - DIY
Price Rs. 329.00 (A)



PH 1037 T
Conduction Of Heat - DIY
Price Rs. 349.00 (A)



PH 1005 S Frictionless
Propeller Kit - DIY
Price Rs. 479.00 (A)



PH 1054 S Wind Powered
Crane - DIY
Price Rs. 199.00 (A)



PH 1010 S
Airfoil Designs
& Shapes - DIY
Price Rs. 219.00 (A)



PH 1024 S Calculate. no.
of Reflection-DIY
Price Rs. 279.00 (A)



PH 1017 S Centrifugal
Force in The Earth Kit - DIY
Price Rs. 519.00 (A)



PH 1029 S Air Pressure &
Atomic Pressure - DIY
Price Rs. 89.00 (A)



PH 1033 T Static
Electricity Kit - DIY
Price Rs. 159.00 (A)



PH 1055 C Hydraulic Arm - DIY
(without bottle)
Price Rs. 689.00 (A)



PH 1039 T RGB DIY Kit
Price Rs. 1,249.00 (A)



PH 1056 S
Air Powered Car - DIY
Price Rs. 919.00 (A)



PH 1030 S Wind Mill
DIY Kit (Air Pressure)
Price Rs. 659.00 (A)



PH 1011 T
Density of Material Kit
Price Rs. 629.00 (A)



PH 1012 S Sprinkler - DIY
Price Rs. 149.00 (A)



PH 1022 S Properties of
Air Kit - DIY
Price Rs. 149.00 (A)



PH 1020 S
Working of Rope Way - DIY
Price Rs. 549.00 (A)



PH 1058 S
Electric Propeller Boat - DIY
Price Rs. 739.00 (A)

(B) - GST@12% is included in the price.

WORKING MODELS



PH 1006 S Working Model of Gyroscope
Price Rs. 739.00 (A)



PH 1031 S Balloon Car - DIY
Price Rs. 279.00 (A)



PH 1059 T Twin Pendulum - DIY
Price Rs. 2,219.00 (A)



PH 1060 T Up Hill Cone (Small) - DIY
Price Rs. 519.00 (A)



PH 1061 C Motion Car
Price Rs. 1,249.00 (A)



PH 1062 T Working Model of Trebuchet - DIY
Price Rs. 659.00 (A)



PH 1063 C Sound and Vibration Kit - DIY
Price Rs. 279.00 (A)



PH 1001 S Magnetic Gun - DIY
Price Rs. 889.00 (A)



PH 1027 S Buoyancy & Archimedes Principle - DIY
Price Rs. 789.00 (A)



PH 1004 T Maxwell's Wheel
Price Rs. 1,869.00 (A)



PH 1040 T Heating Effect From Electricity - DIY
Price Rs. 409.00 (A)



PH 1064 C Series Connection - DIY
Price Rs. 739.00 (A)



PH 1069 T Total Internal Reflection Kit - DIY
Price Rs. 409.00 (A)



PH 1070 T Tesla Coil
Price Rs. 849.00 (A)



PH 1074 C Syringe Generator
Price Rs. 449.00 (A)



PH 1071 S Toy Telescope
Price Rs. 109.00 (A)



PH 1072 T Hand Generator with Pulley - DIY
Price Rs. 889.00 (A)

Similar to above, following DIY kits are also available:

PH 1065 C Resistance In Series and Parallel
Price Rs. 739.00 (A)

PH 1066 C Working of A Resistance
Price Rs. 989.00 (A)

PH 1067 C Variable Resistance Graphite
Price Rs. 989.00 (A)

PH 1068 C Magnetism From Electricity
Price Rs. 989.00 (A)

PH 1076 C Parallel Connection
Price Rs. 889.00 (A)

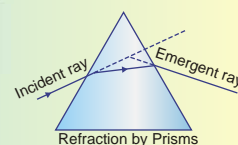
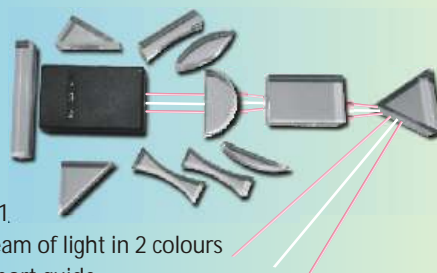
LIGHT AND OPTICS CLASS DEMO KIT Magnetic Featured Ray Box And Blocks

This light and optics kit is a very handy tool for science teachers. It demonstrates the laws of reflection and refraction. **Product Code: PH 1092 C Price Rs. 4,219.00 (A)**

The kit consist of:

- Ray box-1
- Convex lenses-4
- Concave lenses-3
- Slab-1
- Prisms-3
- Rectangular light block-1.

The ray box can project 3 beam of light in 2 colours
Supplied with teacher's support guide



DIY



PH 1087 C
Pulley System - DIY
Price Rs. 789.00 (A)



PH 1075 T
Solinoid Engine
Price Rs. 3,219.00 (A)



PH 1077 C
Solar Reading Lamp
Price Rs. 1,629.00 (A)

DIY



PH 1041 T Electric
Motor Kit - DIY
Price Rs. 619.00 (A)

DIY



PH 1028 S Potential Energy
In Twisted Elastic - DIY
Price Rs. 409.00 (A)

DIY



PH 1078 T
Catapult - DIY
Price Rs. 1,099.00 (A)



PH 1002 T
Hydraulic Jack
Price Rs. 3,219.00 (A)



PH 1081 T
Eddy Current in
An Aluminium Tube
Price Rs. 2,479.00 (A)



PH 1079 T
Hydraulic Arm Lift
Price Rs. 2,219.00 (A)

DIY



PH 1080 S
Screw Jack - DIY
Price Rs. 919.00 (A)

DIY



PH 1035 T
Capillary Action - DIY
Price Rs. 319.00 (A)



PH 1082 T
Magnetic Brake
Price Rs. 2,739.00 (A)



PH 1083 T Magnetic
Induction Pendulum
Price Rs. 1,629.00 (A)



PH 1084 T
Charkha Generator
Price Rs. 4,949.00 (A)

DIY



PH 1023 S Newton's III Law
(Amphibian Car) - DIY
Price Rs. 989.00 (A)

DIY



PH 1088 T
Fidget Generator
Price Rs. 2,479.00 (A)



PH 1089 C
Magic RGB Cubes - DIY
Price Rs. 1,539.00 (A)



PH 1090 C
Gear Driven Generator
Price Rs. 2,369.00 (A)

FUN SCIENCE KITS

DIY



FN 15002 S
Slime Kit - DIY
Price Rs. 789.00 (A)

DIY



FN 15003 S
Soap Making Kit - DIY
Price Rs. 1,189.00 (A)

DIY



FN 15001 S
Snow Making Kit - DIY
Price Rs. 659.00 (A)

DIY



FN 15004 S
Magic Sand - DIY
Price Rs. 709.00 (A)

DIY



FN 15005 S
Bike on Rope - DIY
Price Rs. 579.00 (A)

WORKING MODELS

ZX-43000 Geometric Optics Demonstrator

• Price Rs. 10129.00 (A)

NEW



- To study light reflection and refraction using 1, 3 or 5 parallel laser beams.
 - It Includes multiple acrylic lenses, laser ray box, AC adapter and a lens cleaning cloth. One magnetic activity mat and laminated activity mat with printed scales and angles is provided along with light ray diagrams through various lenses.
 - Packed in a foam lined plastic carry case.
- Note : Never look directly into the laser beam or point a laser beam at a person's eye.
- Box size : 23x17x8 cm.

NEW



ZX-43001

Light Box And Optical Set

• Price Rs. 9389.00 (A)

- The kit is designed to demonstrate range of geometrical optics experiments to study properties of light, optical colour bending and colour mixing.
- Box size: 20x20x15 cm.

BIOLOGY



BG 10001 T
Body Movements DIY Kit
Price Rs. 1,879.00 (A)



BG 10004 S
Study of Seed Germination - DIY
Price Rs. 349.00 (A)



BG 10003 C Types of Food We Eat - DIY
Price Rs. 429.00 (A)



BG 10002 T Resp. Sys. In Human Being - DIY
Price Rs. 659.00 (A)

ROBOTICS



RT 20003 C
Gear Motor Car - DIY
Price Rs. 2,789.00 (A)



RT 20005 C
Wind Mill - DIY
Price Rs. 799.00 (A)



RT 20007 C
Robo Conveyor Machine - DIY
Price Rs. 2,959.00 (A)



RT 20009 C Industrial Lift Gear Model - DIY
Price Rs. 2,589.00 (A)



RT 20010 C Tank With Robotic Arm
Price Rs. 16,289.00 (A)

3 DIMENSIONAL INTERACTIVE PERIODIC TABLE

Product Code: CH 122 C Price Rs. 19699.00 (A)

- Wall mountable
- Detachable element cubes
- 118 Cue cards for teachers
- Colour codes depict the state of elements.
- Below characteristics are depicted on each side of cube:-
 - Element symbol
 - Atomic number
 - Element name
 - Electron structure
 - Atomic weight
 - Electronegativity



- Real life co-relation of elements
- Teacher's hand book
- Size: 103x65 cm

CHEMISTRY



CH 110 T
Chromatography - DIY
Price Rs. 249.00 (A)



CH 103 S Fats, Protein & Carbohydrates Testing Kit - DIY
Price Rs. 789.00 (A)



CH 114 S
Budding Crystal Kit - DIY
Price Rs. 149.00 (A)



CH 109 S
What Is Litmus & Indicator - DIY
Price Rs. 879.00 (A)



CH 107 S
What Is pH Scale - DIY
Price Rs. 409.00 (A)



CH 111 S
Chemical Reaction
Price Rs. 209.00 (A)



CH 115 C Lemon Battery - DIY
(without multimeter)
Price Rs. 349.00 (A)



CH 116 C
Inflate Balloon - DIY
Price Rs. 279.00 (A)



CH 112 C
Water Filter Kit - DIY
Price Rs. 939.00 (A)



CH 113 T
Electroplating - DIY
Price Rs. 639.00 (A)



CH 117 S
Fireproof Balloons - DIY
Price Rs. 479.00 (A)



CH 118 T Chemical Reaction (Elephant Toothpaste) - DIY
(without bottle)
Price Rs. 349.00 (A)



CH 101 S
Density of Liquids Kit - DIY
Price Rs. 219.00 (A)



CH 102 S Miscible and Immiscible Liquids Kit - DIY
Price Rs. 219.00 (A)



CH 119 S
Rapid Oxidation Kit - DIY
Price Rs. 409.00 (A)



CH 105 S
Properties of Carbon Dioxide - DIY
Price Rs. 149.00 (A)



CH 120 T
Solutions, Suspensions & Colloids - DIY
Price Rs. 629.00 (A)



CH 106 S
What Are Common Acid & Bases - DIY
Price Rs. 409.00 (A)



CH 108 S Acid Base Reaction CO₂ - DIY
Price Rs. 519.00 (A)



CH 104 S Acid Bases & Their Properties - DIY
Price Rs. 449.00 (A)



CH 121 C Prod. of Hydrogen & Oxygen - DIY
Price Rs. 709.00 (A)

VISUAL TEACHING AIDS

OPTIONAL ACCESSORIES

OA01	Projection Screen 70"×52" (175 × 130 cms) with folding tripod stand.	Each Rs. 8289.00 (A)
OA02	Projection Screen 60"×60" (150×150 cms) with folding tripod stand.	Each Rs. 8289.00 (A)
OA03	Projection Screen 90"×72" (225×180 cms) with folding tripod stand.	Each Rs. 16569.00 (A)
OA04	Map Screen made of thick white rexine with roller 175×130 cms.	Each Rs. 4049.00 (A)
OA12	Blank Overhead Projector Transparencies - 210×297 mm. Packet of 100 sheets	Per Pkt Rs. 1109.00 (A)

OVERHEAD PROJECTOR TRANSPARENCIES

• Price per transparencies Rs. 110.5.80 (A)

• Available in set only

OT01	Botany set of 75	OT09	Chemistry set of 40
OT02	Zoology set of 75	OT10	Human Physiology set of 50
OT08	Physics set of 50	OT13	First Aid set of 50



2"×2" COLOURED 35 mm SLIDES HEALTH SECTION

• Price per slide Rs. 41.50 (A)

• Available in set only

HEALTH CARE

each set contain 20 slides

SHC01	Health Rules
SHC02	Causes of Diseases
SHC03	Prevention of Diseases
SHC04	Effects of Alcohol

SHC05	Tobacco & Habit Forming Drugs
SHC06	Clean Body
SHC07	Clean Water
SHC08	Constituents of Food
SHC10	Immunization

OTHERS

SH01	Human Physiology set of 50
SH03	Yogasan set of 20
SH07	First Aid set of 50
SH09	Mothercraft set of 30
SH13	Community cleanliness set of 8

ZOOLOGY SECTION

• Price per slide Rs. 41.50 (A)

• Available in set only

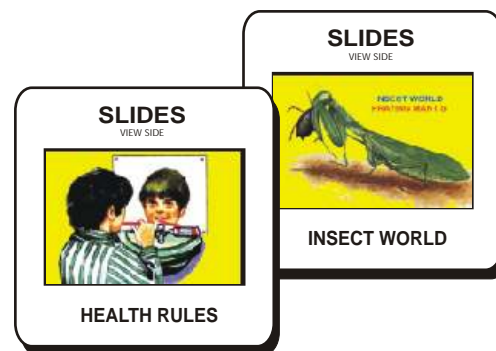
SZ03	Amoeba & Paramecium set of 20
SZ05	Animal Kingdom set of 30
SZ07	Beaks & Feet of Birds set of 20
SZ10	Earthworm set of 20
SZ11	Chick Embryology set of 20
SZ12	Frog Embryology set of 15
SZ13	Rabbit Embryology set of 20
SZ14	Evidence of Evolution set of 20
SZ19	L.H. Butterfly set of 10
SZ21	L.H. Housefly set of 10
SZ22	L.H. Mosquito set of 10
SZ23	L.H. Silkworm set of 10
SZ26	Meiosis set of 15
SZ28	Mitosis set of 10
SZ29	Prehistoric Animals set of 20
SZ32	Snakes set of 20

BOTANY SECTION

• Price per slide Rs. 41.50 (A)

• Available in set only

SB03	Bacteria set of 20
SB06	Dispersal of Seeds set of 20
SB09	Germination of Seeds set of 20
SB16	Meiosis set of 15
SB17	Mitosis set of 10
SB20	Plant Kingdom set of 30
SB22	Pollination set of 10
SB23	Roots set of 20
SB25	Stems set of 20
SB27	Water Plants set of 10
SB28	Botany set of 30



SPECIAL SLIDES

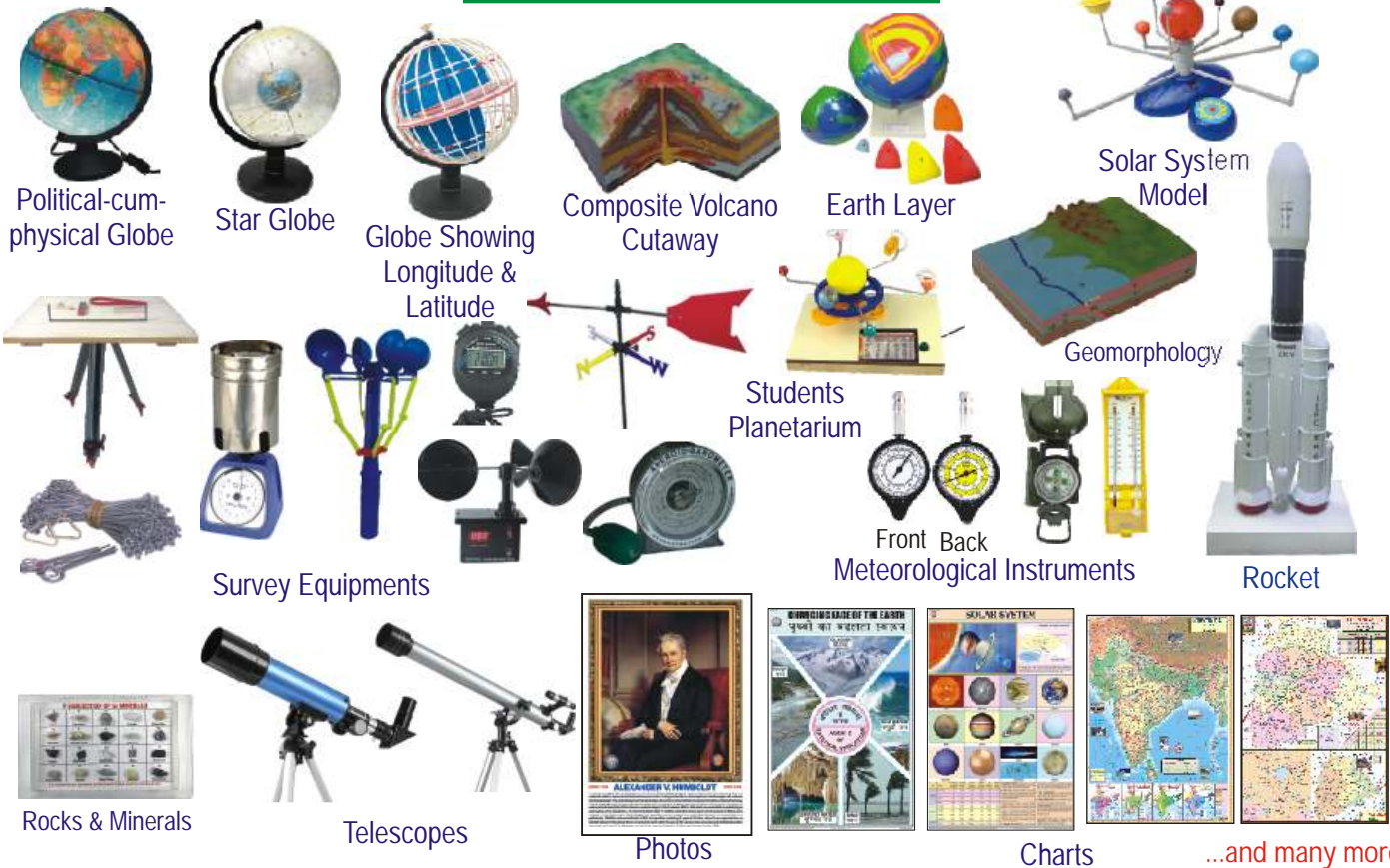
SSS04	Histology set of 100	Rs. 4979.00 (A)
SSS05	Pathology set of 100	Rs. 4979.00 (A)
SSS06	Chemistry Album for 10+2 set of 100	Rs. 4979.00 (A)
SSS07	Physics Album for 10+2 set of 100	Rs. 4979.00 (A)
SSS09	Human Physiology set of 100	Rs. 4979.00 (A)

BIO VIEWERS

BV01	Slide viewer for Viewing Slides in available light	Rs. 1289.00 (A)
------	--	-----------------

Biostrips are available on various subjects. Biostrips can be prepared on any subject (Minimum quantity 50 each title).

SOCIAL STUDIES



MATHS LAB ITEMS



NEWLY INTRODUCED ITEMS



ZX-3213PN Frog Dissection Model
(Details on Page No.- S-13)



ZX-1442K Oral Hygiene Training Kit
(Details on Page No.- S-41)



ZX-2103 Plant Cell Model
(Details on Page No.- S-42)



ZX-1203S Foot Anatomy Model
(Details on Page No.- S-26)



ZX-1449P Lymph Node
(Details on Page No.- S-34)



ZX-42000 Horseshoe Magnet, Giant
(Details on Page No.- S-45)



ZX-3105 Mitosis Model
(Details on Page No.- S-43)



ZX-3106 Meiosis Model
(Details on Page No.- S-43)



ZX-42001 Magnetic Field Demonstrator, Cylinder
(Details on Page No.- S-45)



SE92 Compass Liquid metallic Body
(Details on Page No.- S-46)



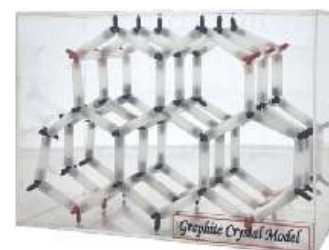
Front Back
ZX-81005 Map Measurer (Rotometer)
(Details on Page No.- S-46)



CM101 Diamond Crystal Model
(Details on Page No.- S-46)



Telescopes
(Details on Page No.- S-44)



CM102 Graphite Crystal Model
(Details on Page No.- S-46)